



**Division of Behavioral and Social Sciences  
POLITICAL SCIENCE DEPARTMENT  
Thursday, March 23, 2023**

**MINUTES**

- Members:**
- |  |   |
|--|---|
| <input checked="" type="checkbox"/> Dean: Chris Gold | <input type="checkbox"/> Austin Gordon                              |
| <input checked="" type="checkbox"/> Josh Casper      | <input checked="" type="checkbox"/> Laurie Houske                   |
| <input type="checkbox"/> Van Chaney                  | <input type="checkbox"/> Christine Jun                              |
| <input type="checkbox"/> Ellen Coleman               | <input type="checkbox"/> Tom Klein                                  |
| <input type="checkbox"/> Angela Cranon-Charles       | <input type="checkbox"/> Eduardo Munoz                              |
| <input type="checkbox"/> Paul Flor                   | <input checked="" type="checkbox"/> David Reed                      |
| <input type="checkbox"/> Joe Georges                 | <input type="checkbox"/> Karl Striepe                               |
| <input checked="" type="checkbox"/> Steven Gonzales  | <input checked="" type="checkbox"/> Counselor: Brian Mims           |
|  | <input checked="" type="checkbox"/> BSS Associate Dean: Irena Zugic |
- 

**I) New BSS Associate Dean: Irena Zugic**

- The Dean introduced Irena to the POLI faculty and welcomed her to the division. POLI faculty introduced themselves.

**II) Counselor's Report: Brian Mims (PowerPoint slide 3)**

- Brian announced the *Chat with a BSS Counselor* and *Spring University Fair* events.
- Also, he shared the good news that Umoja would be expanding.

**III) Political Science Club**

- The Political Science Club is active. They had a guest speaker from the CFA who discussed CSU student interests in state government.

**IV) Scheduling and Enrollment (PowerPoint slides 4-7)**

- Enrollment is beginning to recover from pandemic losses.
- More seats were filled this Spring in POLI classes than last year and fill rates are higher.
- Online classes are enrolling better than on campus.
- Faculty explained that POLI 1 has a reputation of being hard and students may want to take it on campus.
- For the hybrid modality, faculty noted that it works as a flipped classroom so content learning is online and class time can be spent on activities. It may help to have some professional development around hybrid instruction. Also, students may be confused about the hybrid modality and it would be good to explain to them the benefits.

#### **V) Student Success and Gap Data (PowerPoint slides 8-10)**

- Following a larger trend in the division, success rates have declined between Fall 2019 through Fall 2022. The low success rate in Fall 2022 may be related to long term impact of the pandemic on student learning. This group of students may need to catch up. Poorer K12 student performance on standardized testing has been covered in the news, and these students are coming to us.
- The number of degrees awarded, however, has been on the rise. With lower fill rates and more online sections, students may have more access to the classes they need.

#### **VI) SLOs and Curriculum**

- There is no curriculum due this semester.
- Courses to be assess this spring are listed on PP slide #11. Part-time faculty are the only instructors and will be assessing in the following courses: POLI 10H SLO 2 (Karl) and POLI 5 SLO 3 (Van Chaney).

#### **VII) New Building and Offices**

- Construction is delayed and the new SOCS building will possibly be ready to occupy on September 1, 2023. Admin Services will try to avoid disrupting instruction with the move. It is possible instruction will begin in the new building in Winter 2024.
- Division Council has approved the following process for assigning faculty offices in the new building: By seniority, faculty members will select a roommate and an office beginning with the most senior faculty member and proceeding according to seniority. Bev will start reaching out to people and we can set up tours to see the offices since we have quite a bit of time.

Attachment: Meeting PowerPoint

cc: Carlos Lopez, VPAA  
Political Science Department Faculty  
BSS MetaMajor Counselors



Political Science  
Department Meeting

Thursday, March 23, 2023

# Political Science Department

## Reports and Announcements

- New BSS Associate Dean! Irena Zugic. Welcome!
- Counselor's Report
- Political Science Club

## Department Business

- Scheduling and Enrollment
- Student Success and Gap Data
- SLOs and Curriculum
- New Building and Offices



**DROP BY AND CHAT WITH A COUNSELOR**

For students whose major is in Behavioral and Social Sciences.



**Quick questions**



**Snack**  
juice or cookie



**Meet us!**  
Counselors

 9AM-11AM	 <b>MARCH 7TH</b> <b>APRIL 4TH</b> <b>MAY 2ND</b> <b>JUNE 6TH</b>	 <b>BETWEEN THE SOUTH GYM AND SOCIAL SCIENCE BLDG.</b>
---	---	--

**QUESTIONS?**

 310-660-3442

 [www.elcamino.edu/support/counseling/index.aspx](http://www.elcamino.edu/support/counseling/index.aspx)

EL CAMINO COLLEGE TRANSFER CENTER 

# SPRING UNIVERSITY FAIR

CONNECT WITH UNIVERSITY REPRESENTATIVES FROM VARIOUS UC'S, CSU'S AND PRIVATE SCHOOLS AT ECC!

**THURSDAY, MARCH 23, 2023**  
11 A.M. - 2 P.M.  
**STUDENT SERVICES PLAZA**

**\*On-Campus Event\***

- \*Connect with over 40 Colleges & Universities.
- \*Learn about University Admissions Requirements, the Transfer Process, Academic Programs, Campus Life and much more...

For more information, scan the QR code.



<https://bit.ly/3JKKLdC>



The El Camino Community College District is committed to providing an educational and employment environment in which no person is subjected to discrimination on the basis of actual or perceived race, color, ancestry, national origin, religion, creed, age (over 40), disability (mental or physical), sex, gender (including pregnancy and childbirth), sexual orientation, gender identity, gender expression, medical condition, genetic information, marital status, military and veteran status, or retaliation; or on any other basis as required by state and federal law.

# Spring 2020-23 Section Count

Class	Spring 2020 (39 sections)	Spring 2021 (42 sections)	Spring 2022 (43 sections)	Spring 2023 (40 sections)
1	33	32	29	27
1H		1	1	1
2	1	2	3	3
5	1	1	2	2
6	1	1	1	1
7	1	2	3	2
10	1	2	3	3
10H	1	1	1	1

# Enrollment and Modality

## Spring 2022

Total Sections – 43 sections

Seats Filled – 1,249

Overall Fill Rate – 68% fill rate

Online – 28 sections, 84.5% fill rate

On Campus – 10 sections, 51% fill

Hybrid – 4 sections, 57% fill rate

Dual Enrollment – 1 sections, 50%

## Fall 2022

Total Sections – 41 sections

Seats Filled – 1,458

Overall Fill Rate – 85% fill rate

Online – 25 sections, 90% fill rate

On Campus – 9 sections, 83% fill rate

Hybrid – 5 sections, 69% fill rate

Dual Enrollment – 2 sections, 62%

## Spring 2023

Total Sections – 40 sections

Seats Filled – 1,333

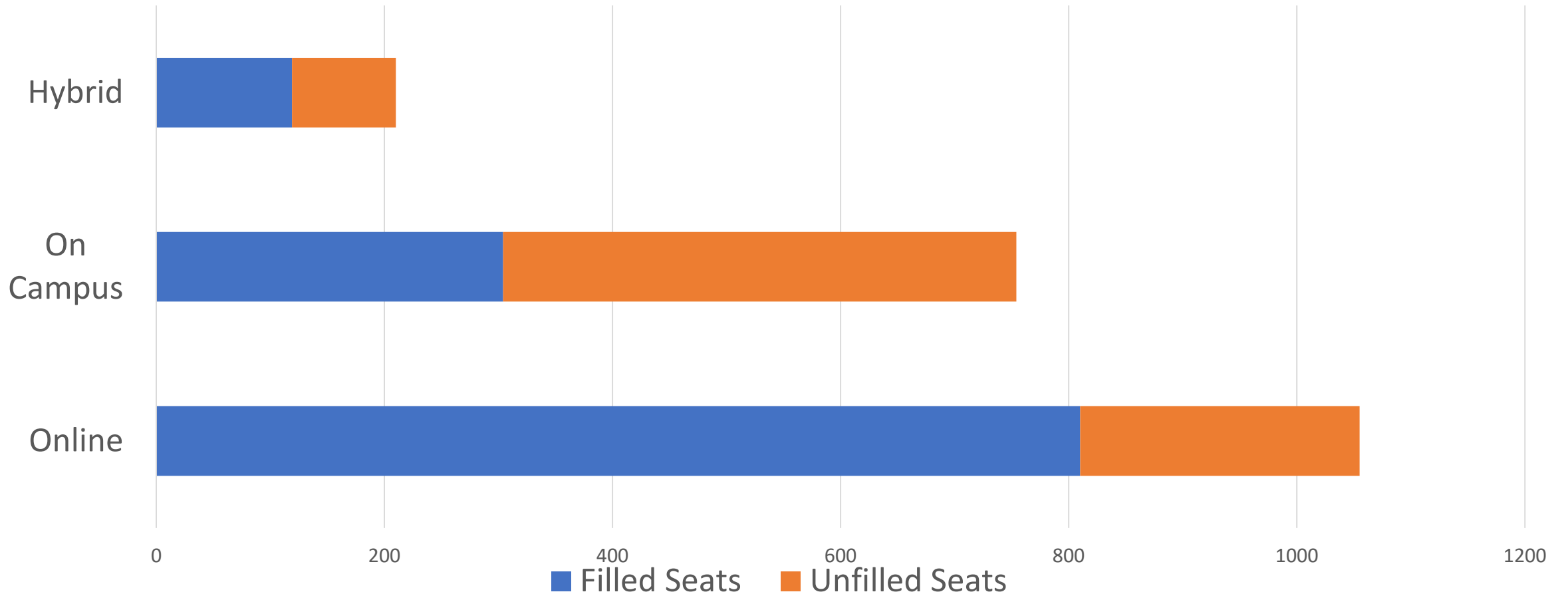
Overall Fill Rate – 78% fill rate

Online – 24 sections, 77% fill rate

On Campus – 11 sections, 68% fill

Hybrid – 5 sections, 57% fill rate

# Spring 2023 Enrollment – Seats Filled and Unfilled





# Fall 2023 Scheduling

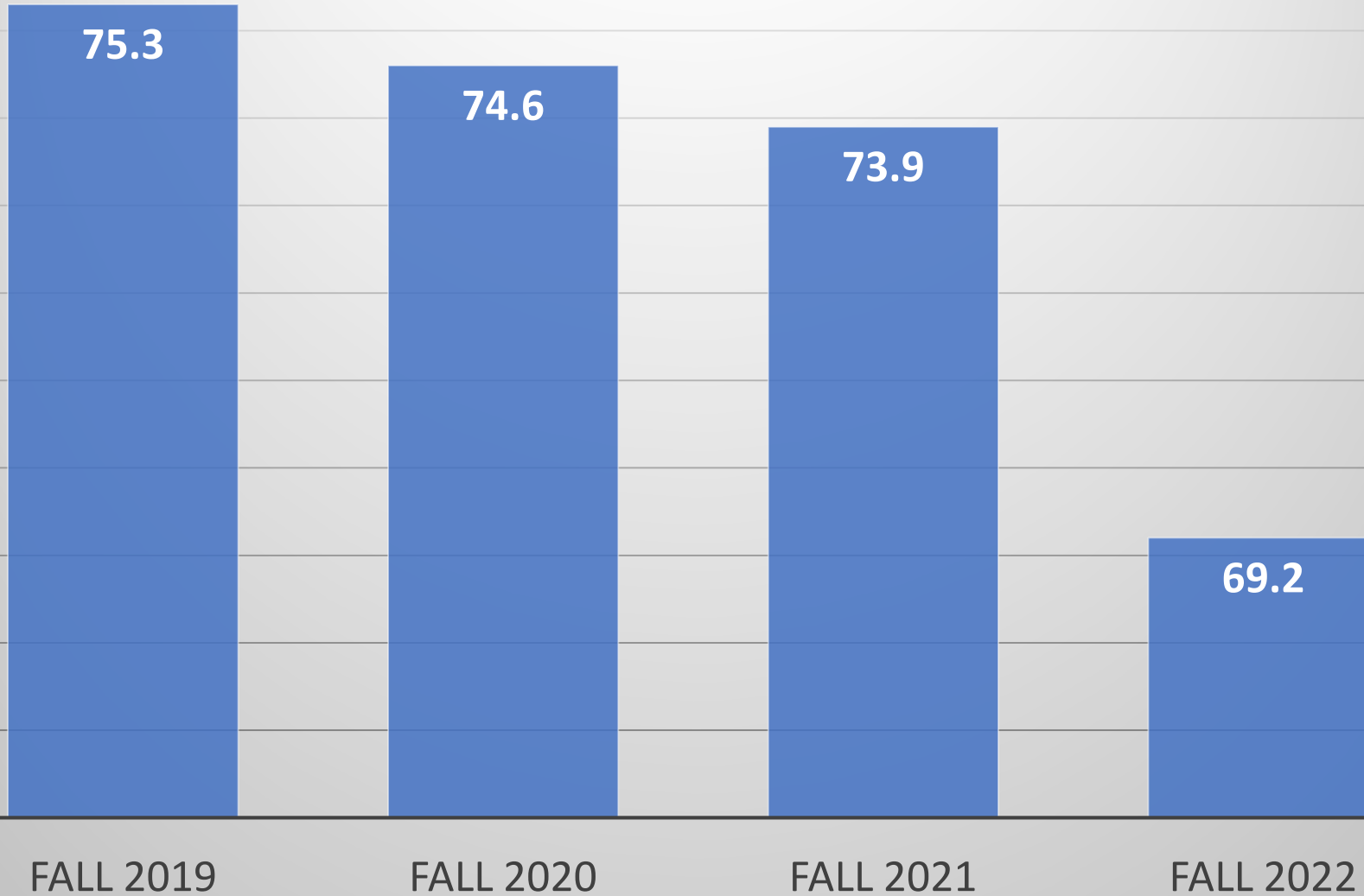
**Scheduling Priority:** Improve fill rates while maximizing student access to general education and major's courses in a strategically selected variety of modalities that reflect enrollment patterns and shifting student demand since the return to campus.

## **Goals/Factors**

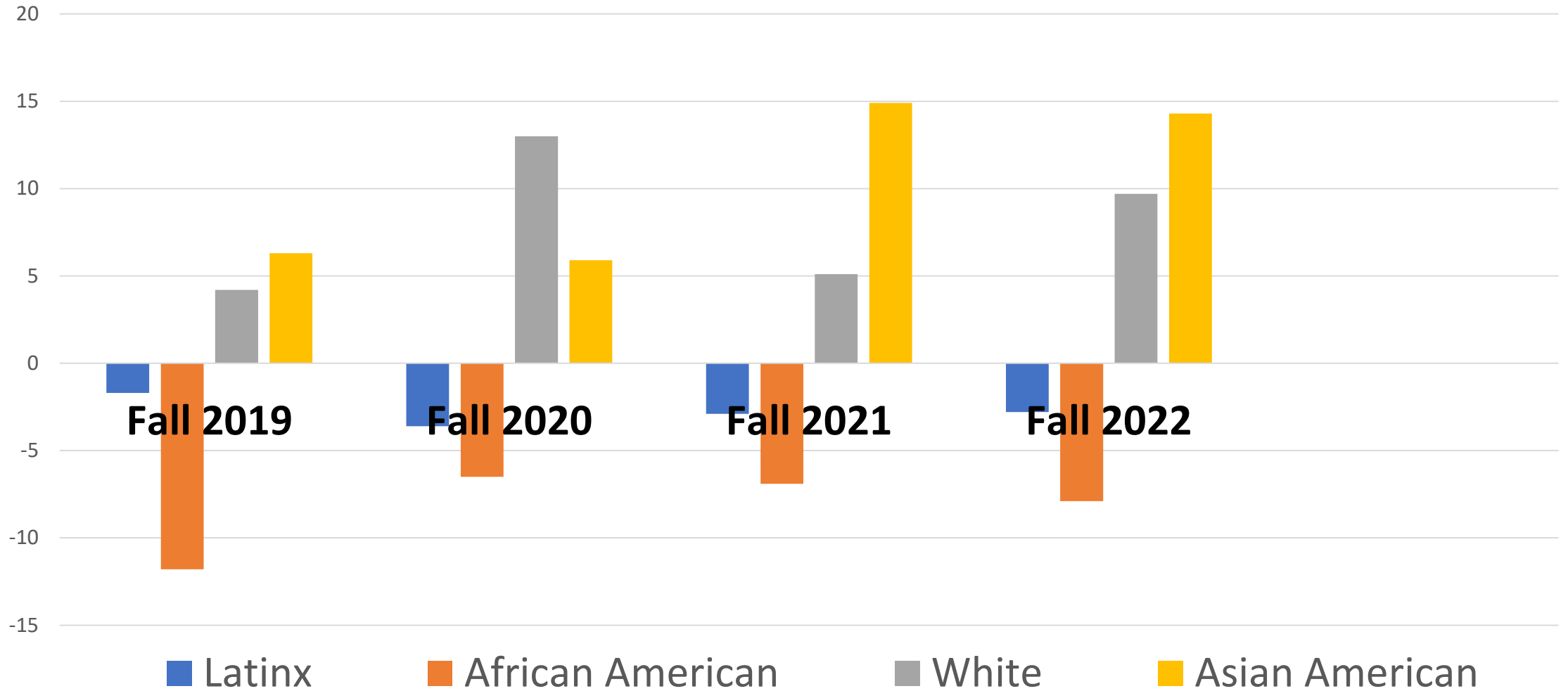
1. Strategically schedule fewer on campus sections, so we don't have multiple sections of a course with very low enrollment yet we still maintain a variety of on campus options for students (Spring 2023 BSS on campus fill rate 54%).
2. Maintain online sections (Spring 2023 BSS online fill rate 87%).
3. Avoid scheduling overlapping sections of a course or courses required for a major.
4. Modest demand for on campus and hybrid classes will support the expectation that faculty be teaching on campus 2 days a week in Fall 2023. In Spring 2024, it is possible that will increase to 3 instructional days a week on campus.
5. All classes must comply with the block schedule.



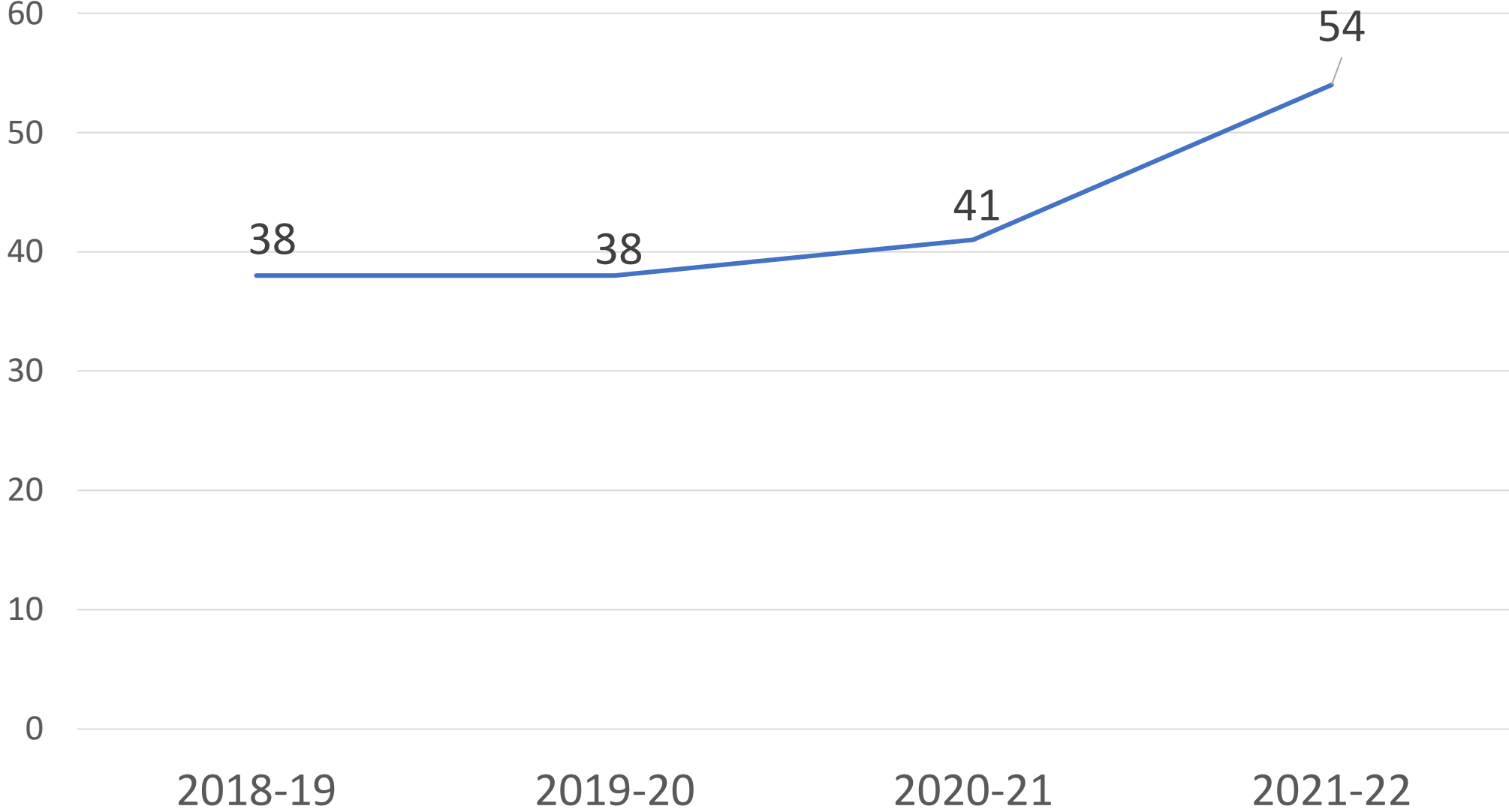
## Success – Political Science – Fall 2019-2022



# Success Gaps – Political Science Fall 2019-2022



# POLITICAL SCIENCE AAT DEGREES



— AATs

# PLOs/SLOs and Curriculum

## Spring 2023 - Eduardo

POLI 10 SLO 2

POLI 10H SLO 2

POLI 5 SLO 3

POLI 6 SLO 3

Gateway Course Assessment through Canvas. Simplifies the process with a standard assessment and allows for disaggregation, which is required by accreditation.

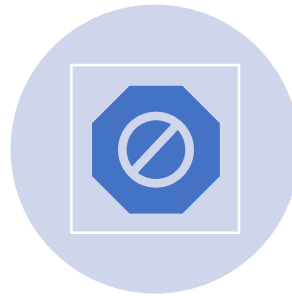
## Curriculum - Laurie

None

# SOCS Building Move and Offices



Construction is delayed – the building will possibly be ready to be occupied on September 1, 2023



Will avoid disrupting instruction with the move.



Possible instruction to begin in new building Winter 2024.



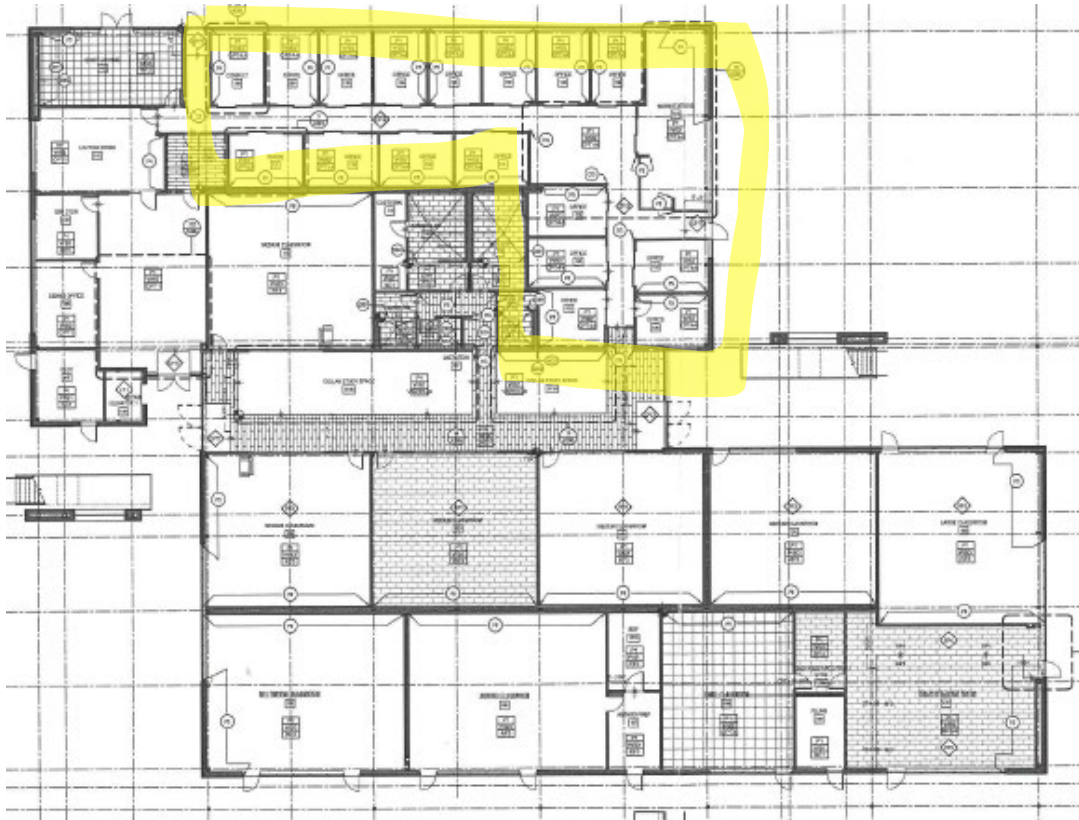
This may all change given weather or other construction delays.

# Office Selection Procedure - Seniority

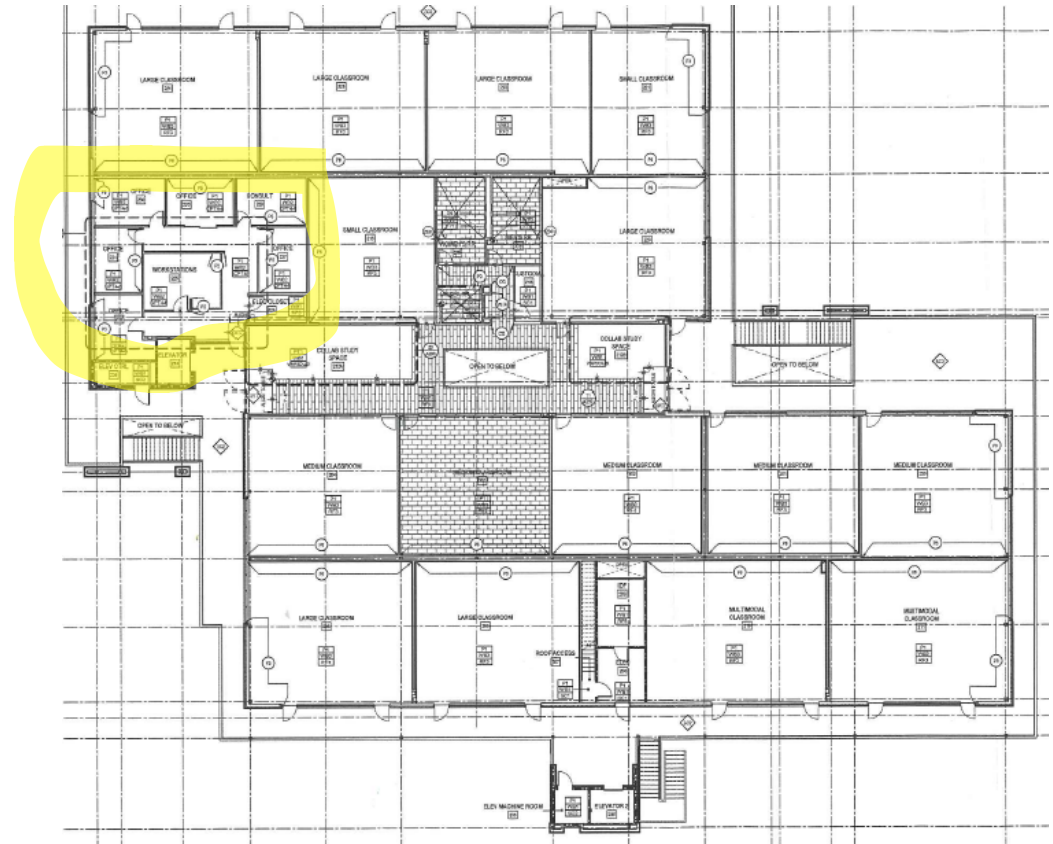
By seniority, faculty members will select a roommate and an office beginning with the most senior faculty member and proceeding according to seniority.



# SOCS Office



First Floor



Second Floor

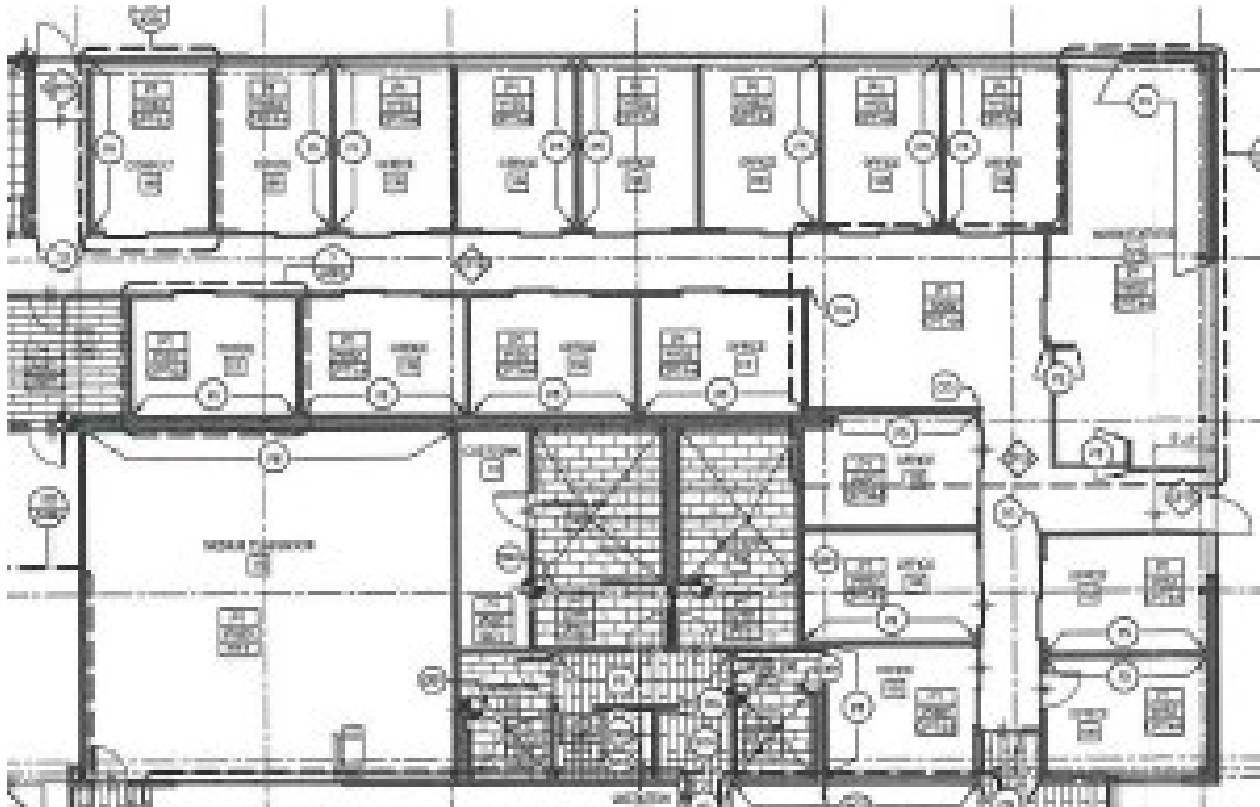


# Selection Procedure – BSS Offices

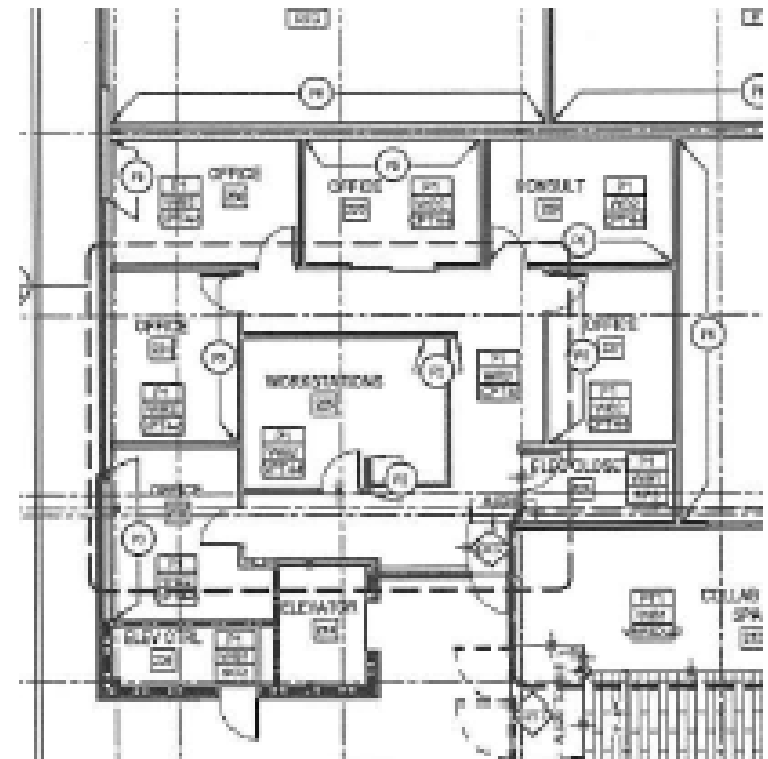
21 Offices that accommodate 42 faculty

Fall 2023 will have 39 FT faculty in SOCS Building.

First Floor – 15 available offices



Second Floor – 6 available offices



# Reports and Announcements

