



Sociology Department Meeting

Thursday, Nov. 10, 2022



# Sociology Department

## Reports and Announcements

- Division Counselor, Cheryl Kroll
- BSS Success Team Chair, David Reed
- Affinity Centers

## Department Business

- Summer and Fall Scheduling and Enrollment
- Assessment Curriculum and Annual Plan
- Website
- New Building and Offices

## Counseling Updates for Department Meetings: Fall 2022

### Transfer Center Events:

<https://www.elcamino.edu/academics/transfer-center/events-and-workshops/index.aspx>.

*If your students could not attend the on campus university fair, please note that students may also book appointments with a wide variety of college/university representatives on our Transfer Center website as well. In person and virtual opportunities are available.*

*CSU/UC Application workshops began on October 1<sup>st</sup>. Both in person and virtual options will be available through the end of November. Students will sign up on the Transfer Center website.*

*In person CSULB tour coming soon!*

### Career Center Events:

<https://www.elcamino.edu/support/careers/index.aspx>

New meta major resources have been added to this website and students can now access job opportunities here as well.

### Scheduling Counseling Appointments:

Students are now able to book appointments via this link:

<https://www.elcamino.edu/support/counseling/appointments.aspx>

**IF THEY HAVE TROUBLE, FEEL FREE TO REFER THEM TO ME DIRECTLY!**

### Meta Major Outreach

We finished reaching out to all new BSS meta major students for educational planning this semester and are now working on students who are close to graduating and may qualify for a degree.

We will be hosting Meta Major Con again this spring and have hosted two Coffee With a Counselor events this fall.

# ECC Connect Boosts Fall-to-Spring Persistence

Fall to Spring Persistence	Fall 2018	Fall 2019	Fall 2020	Fall 2021
<b>Connect Student</b>	<b>82%</b>	<b>80%</b>	<b>78%</b>	<b>71%</b>
In Support Program	88%	85%	85%	79%
Not in Support Program	71%	73%	71%	64%
American Indian	67%	92%	75%	78%
Asian	86%	84%	84%	75%
Black/African American	73%	73%	71%	65%
Hawaiian/Pacific Islander	84%	65%	73%	61%
Hispanic	83%	80%	77%	70%
Two or More Races	89%	79%	78%	75%
Unknown	67%	67%	73%	63%
White	83%	85%	80%	73%
<b>Non-Connect Student</b>	<b>71%</b>	<b>65%</b>	<b>63%</b>	<b>54%</b>
In Support Program	80%	73%	72%	64%
Not in Support Program	67%	62%	60%	50%
American Indian	77%	44%	65%	36%
Asian	78%	71%	67%	60%
Black or African American	61%	59%	58%	48%
Hawaiian/Pacific Islander	71%	60%	51%	58%
Hispanic	71%	64%	62%	53%
Two or More Races	76%	71%	66%	53%
Unknown	60%	53%	60%	54%
White	75%	67%	67%	56%

Recent data indicates that ECC Connect use by faculty has a positive effect on fall-to-spring persistence (11-16%).

In a time of decreased enrollment numbers, ECC Connect use by faculty is more important than ever!

# Affinity Centers

---

- Social Justice Center (SJC)
- FIRST (Formerly incarcerated & impacted students)
- Black Student Success Center (BSSC)
- LatinX Center (LXC)
- Asian, Pacific Islander, Native Hawaiian Center (APINH)
- Lesbian, Gay, Bi-Sexual, Transgender Plus Center (LGBT+)
- Immigrant Student Success Center (ISS)

# Summer Section Count 2020-22

Course	Summer 2020 (13 sections)	Summer 2021 (13 sections)	Summer 2022 (9 sections)
101	8	8	5
102	2	2	1
104	2	2	1
109A	0	0	1
112	1	1	1

# Fall Section Count 2020-22

<b>Class</b>	<b>Fall 2020 (34 sections)</b>	<b>Fall 2021 (29 sections)</b>	<b>Fall 2022 (31 sections)</b>
101	18	15	17
101H	1	1	1
102	4	3	3
104	3	3	3
107	2	2	2
109A	1	1	1
112	3	3	3
118	1	1	1

# Spring and Fall 2022 Schedule & Enrollment by Modality (week 3)

## Spring 2022

Total Sections - 30 sections

Seats Filled – 1,083

Overall Fill Rate – 84% fill rate

Online – 21 sections, 91% fill rate

On Campus – 2 sections, 40% fill rate

Hybrid – 6 sections, 45% fill rate

## Fall 2022

Total Sections - 31 sections

Seats Filled – 1,205

Overall Fill Rate – 82% fill rate

Online – 23 sections, 90.5% fill rate

On Campus – 4 sections, 61% fill rate

Hybrid – 4 sections, 70.5% fill rate



## Sociology Classes – From Load Report

Year	Sections	Seats Filled	Fill Rate	Avg. Class Size
2019	33	1,530	97	45
2020	34	1,510	93	43
2021	28	1,213	93	42
2022	31	1,205	82	38

# Assessment, Curriculum, Annual Plan, Website

## Fall SLO Assessments

- Kassia

## Curriculum for Fall

- Melissa
- 109A/B and Medical Sociology

## Annual Plan

- Stacey?

## Website

- Email Dean OER photos and content



## SOCIOLOGY

Upon successful completion of the program requirements, the student will acquire an understanding of major sociological concepts and theoretical perspectives on social problems and social life as they apply to the individual, group, and society. Students will also understand the principles of research methods and data analysis. The major prepares students for careers in fields such as teaching, research, social work, public relations, and counseling. Students will demonstrate their proficiency in sociological competencies through examinations and writing assignments on the major sociological theories and research techniques.

---

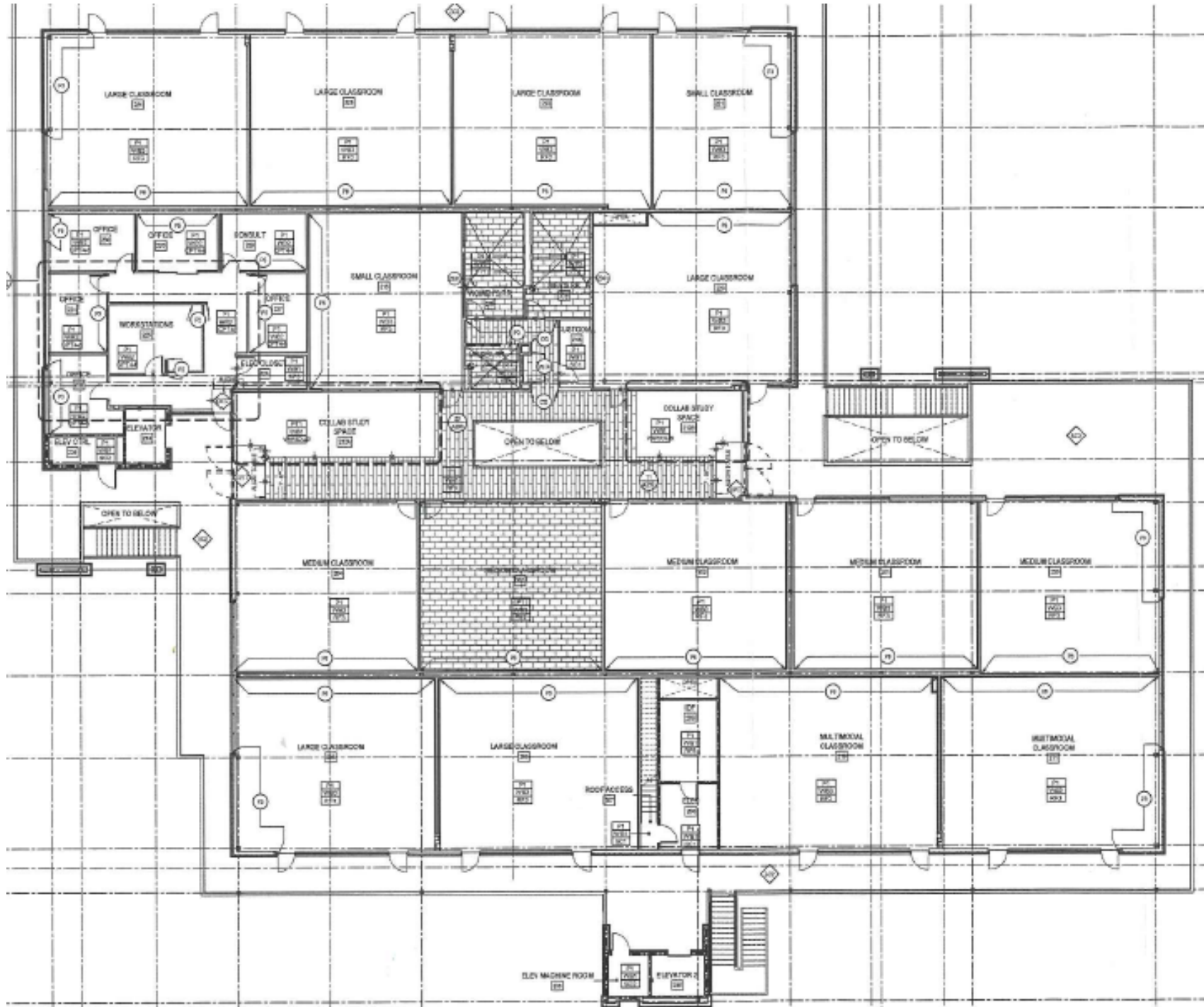
### Contact Information:

Dr. Christina Gold, Dean

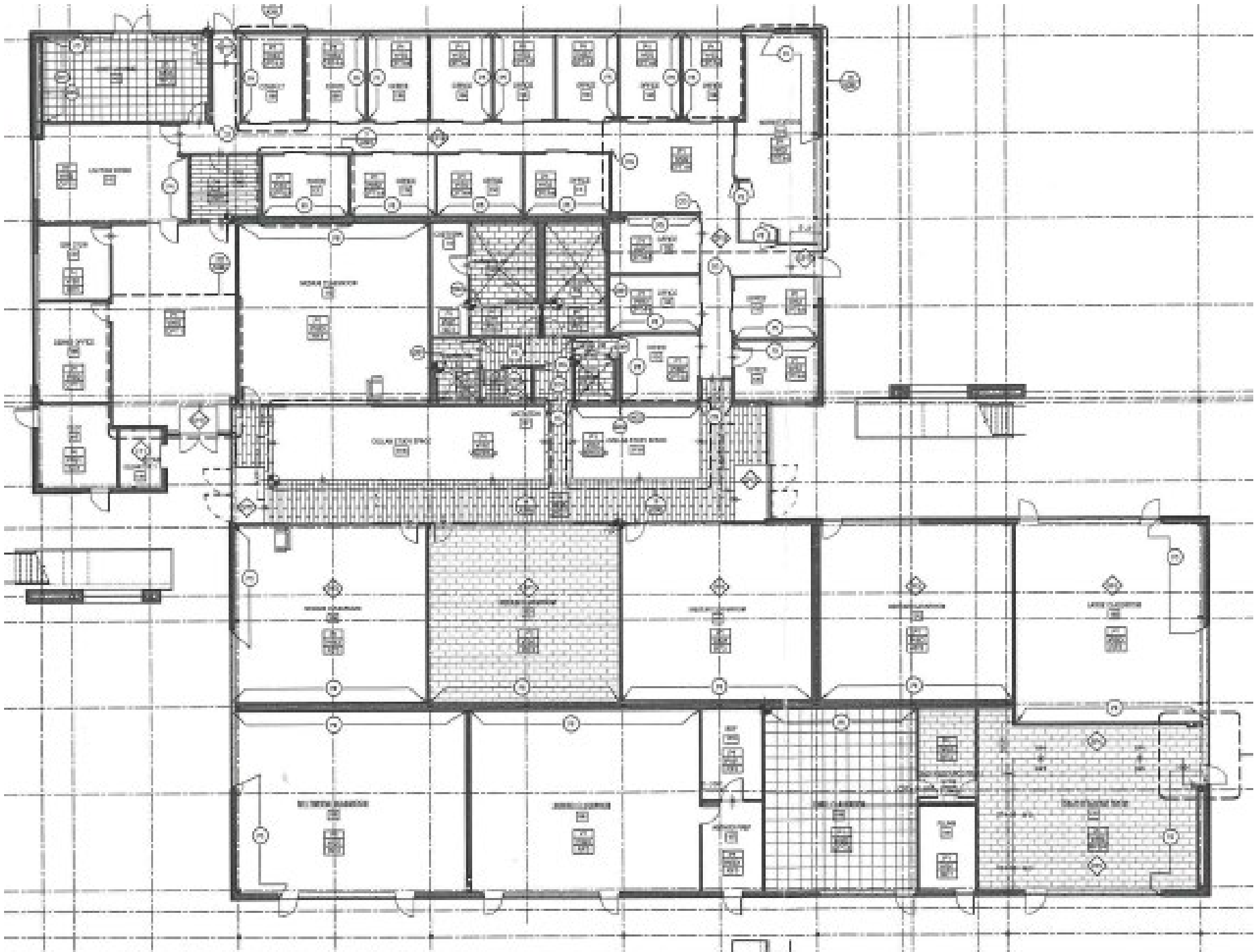
Office: Social Science Building, Room 101

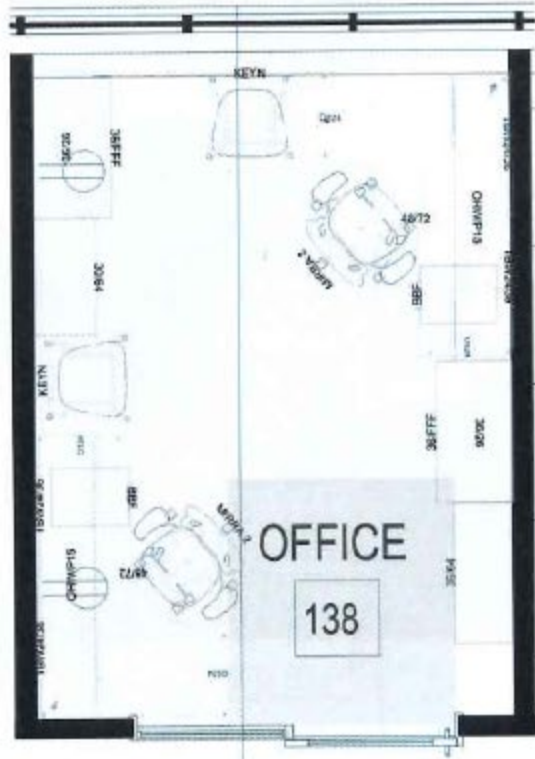
Phone: 310-660-3735

Email: [cgold@elcamino.edu](mailto:cgold@elcamino.edu)









**FACULTY OFFICE TYP1**

- (2) CANVAS FREESTANDING EXTENDED CORNER SURFACES
- (2) BBF PEDESTAL
- (2) OVERHEADS WITH SLIDING DOORS
- (2) 5H OPEN BOOKCASES
- (2) 5H HIGH LATERAL FILE WITH OPEN BOOKCASE UNITS
- (2) TASK CHAIRS
- (2) GUEST CHAIRS



Client Signature \_\_\_\_\_ Date \_\_\_\_\_

Note: Your approval is necessary for our order process to begin. Your signature here indicates that all fabrics and finishes are approved as shown. Fabrics and finishes are displayed for reference only and will vary by monitor and printer from the actual material color. Selections have been made with a physical sample or swatch for true color and detail.

05/06/2022

