



Psychology Department Meeting

Tuesday, Nov. 22, 2022

Psychology Department

Reports and Announcements

- Division Counselor, Cheryl Kroll
- BSS Success Team Chair, David Reed
- Affinity Centers
- Communication Studies Joining BSS Division
- Faculty Evaluation Schedule
- Psychology Position Request and Adjunct Search
- Summer Study Abroad and Holiday Potluck
- New Building – Move-in Plans and Selecting Officemates

Department Business

- Summer and Fall Scheduling and Enrollment
- Assessment, Curriculum, Committee Service, and Annual Plan
- Website

Counseling Updates for Department Meetings: Fall 2022

Transfer Center Events:

<https://www.elcamino.edu/academics/transfer-center/events-and-workshops/index.aspx>.

If your students could not attend the on campus university fair, please note that students may also book appointments with a wide variety of college/university representatives on our Transfer Center website as well. In person and virtual opportunities are available.

CSU/UC Application workshops began on October 1st. Both in person and virtual options will be available through the end of November. Students will sign up on the Transfer Center website.

CSULB Tour: Friday, December 2nd from 9-3 pm. Students sign up with a \$% refundable deposit in the Transfer Center.

Career Center Events:

<https://www.elcamino.edu/support/careers/index.aspx>

New meta major resources have been added to this website and students can now access job opportunities here as well.

Scheduling Counseling Appointments:

Students are now able to book appointments via this link:

<https://www.elcamino.edu/support/counseling/appointments.aspx>

IF THEY HAVE TROUBLE, FEEL FREE TO REFER THEM TO ME DIRECTLY!

Meta Major Outreach

We finished reaching out to all new BSS meta major students for educational planning this semester and are now working on students who are close to graduating and may qualify for a degree.

ECC Connect Boosts Fall-to-Spring Persistence

Fall to Spring Persistence	Fall 2018	Fall 2019	Fall 2020	Fall 2021
Connect Student	82%	80%	78%	71%
In Support Program	88%	85%	85%	79%
Not in Support Program	71%	73%	71%	64%
American Indian	67%	92%	75%	78%
Asian	86%	84%	84%	75%
Black/African American	73%	73%	71%	65%
Hawaiian/Pacific Islander	84%	65%	73%	61%
Hispanic	83%	80%	77%	70%
Two or More Races	89%	79%	78%	75%
Unknown	67%	67%	73%	63%
White	83%	85%	80%	73%
Non-Connect Student	71%	65%	63%	54%
In Support Program	80%	73%	72%	64%
Not in Support Program	67%	62%	60%	50%
American Indian	77%	44%	65%	36%
Asian	78%	71%	67%	60%
Black or African American	61%	59%	58%	48%
Hawaiian/Pacific Islander	71%	60%	51%	58%
Hispanic	71%	64%	62%	53%
Two or More Races	76%	71%	66%	53%
Unknown	60%	53%	60%	54%
White	75%	67%	67%	56%

Recent data indicates that ECC Connect use by faculty has a positive effect on fall-to-spring persistence (11-16%).

In a time of decreased enrollment numbers, ECC Connect use by faculty is more important than ever!

Affinity Centers

- Social Justice Center (SJC)
- FIRST (Formerly incarcerated & impacted students)
- Black Student Success Center (BSSC)
- LatinX Center (LXC)
- Asian, Pacific Islander, Native Hawaiian Center (APINH)
- Lesbian, Gay, Bi-Sexual, Transgender Plus Center (LGBT+)
- Immigrant Student Success Center (ISS)

Communication Studies – Joining BSS Division

- Communication Studies will be moved to the BSS Division. Most likely in Fall 2023.
- They are already part of our meta-major, and now they will be part of the Division.
- The division will receive an Associate Dean and clerical support for Forensics.
- COMS includes 8 full-time faculty and 15 part-time faculty.
- COMS has 15 courses and are offering 67 sections this Fall 2022 semester; 25 in Winter 2023; and 84 in Spring 2023.
- COMS 100 Public Speaking is their primary course and comprises half or more of their offerings.
- COMS offers a Communication Studies AAT degree and includes the successful Forensics Team.
- Their classes and offices will be in the SOCS building after we move.

[By comparison, Psychology has 6 full-time faculty, 17 part-time faculty and 77 sections this Fall.]

FACULTY EVALUATIONS – FALL 2022

Instructions and Timeline

EVALUATOR INSTRUCTIONS	TIMELINE	EVALUATEE INSTRUCTIONS
<ul style="list-style-type: none"> • If the <u>evaluator</u> is teaching in a variety of modalities, use your professional judgment in selecting the section(s) to observe. • For on campus and live online evaluations, contact the <u>evaluator</u> and schedule at least 30 minutes for an observation. • For online observations, you will have access to the <u>evaluator's</u> Canvas class(es) during the observations time frames listed in this chart. You may choose to contact the <u>evaluator</u> to schedule a Canvas site tour. • Enter your observation report information into the peer evaluation form in Perform before you review the student survey results (Article 20, sections 1f, 2e3, and 3e). 	<p style="text-align: center;"><u>OBSERVATIONS</u></p> <p style="text-align: center;">16-week courses - Oct. 8-21 1st 8-week courses – Sept. 17-23 2nd 8-week courses - Nov. 12-18</p>	<ul style="list-style-type: none"> • The evaluator will contact you to schedule the observation(s) if you are teaching in person or live online. Please consult the contract for uncommon situations where an unannounced visit may occur. • If you are being evaluated online, the evaluator(s) will have access to your course(s) during the time frames listed here and may request a tour through your Canvas site. • Depending on your circumstances (for instance, probationary faculty), the Dean may also conduct one or more observations.
<ul style="list-style-type: none"> • Student surveys for all modalities (on campus, hybrid and online) will be administered online through Canvas. • If survey results are not received by the dates listed here, please proceed with the evaluation process without them. This should be noted in the self-evaluation and the conference report. 	<p style="text-align: center;"><u>STUDENT SURVEYS</u></p> <p style="text-align: center;"><u>Administered:</u></p> <p style="text-align: center;">16-week courses - Oct. 8-21 1st 8-week courses – Sept. 17-23 2nd 8-week courses - Nov. 12-18</p> <p style="text-align: center;"><u>Results:</u></p> <p style="text-align: center;">16 & 1st 8 week courses - Nov 11 2nd 8 week courses - asap</p>	<ul style="list-style-type: none"> • Student surveys for all modalities (on campus, hybrid and online) will be administered online through Canvas. Automatic messages in Canvas will remind students to complete the survey. • If student survey results are not received on time, please proceed with completing the self-evaluation and note that you have not received your survey results.

SELF-EVALUATION

16 & 1st 8 week courses - Nov 18
2nd 8 week courses- Dec. 2

Complete and submit the self-evaluation in Perform by the due dates listed here. Once you submit your self-evaluation, you will no longer be able to edit it.

EVALUATION CONFERENCE

Tenured/Probationary/ FT
Temporary Faculty:

16 & 1st 8 week courses - Dec. 2
2nd 8 week courses - Dec. 9

Adjunct Faculty:
All courses - Dec. 16
(Article 20, section 3g)

Note: it is recommended that adjunct conferences (especially for needs improvement and unsatisfactory) be held by Dec. 9 so there is enough time to complete the evaluation process before the end of the semester.

In preparation for the conference, email the following to your evaluator at least one week before the conference: self-evaluation and syllabus. Also, probationary faculty may be asked to provide up to two samples of exams, quizzes, assignments, activities or grade records. Other faculty may choose to submit these.

Your evaluator or the Dean will contact you to schedule the conference.

The conference includes discussion of the student surveys, peer evaluation, self-evaluation, SLOs, and any other required or voluntarily submitted materials.

- The self-evaluation should be available in Perform after the due dates listed here.

- Schedule the evaluation conference at a time convenient to you and the evaluatee [the Dean will schedule conferences for probationary faculty, including a pre-conference meeting with just the evaluator(s)].
- Evaluation conferences are not required for adjunct faculty if they earn a satisfactory, however either the evaluator or the evaluatee may request it (Article 20, section 3g).
- Review the evaluatees' materials in preparation for the conference, including the self-evaluation report, student survey results, syllabus, and any other instructional materials the evaluatee may have chosen to share. Evaluators of probationary faculty may choose to require the submission of up to two samples of exams, quizzes, assignments, activities, or grade records.
- At the conference, discuss all the materials listed above in addition to the SLOs.
- If the evaluatee earned an overall Needs Improvement or Unsatisfactory, carefully read and abide by the relevant portions of the contract (Article 20) and promptly consult with the Dean prior to your evaluation conference.
- At the conference please explain that the conference was conducted in accordance with Article 20 of the faculty contract. Please put this in the conference notes (Article 20 sections 1h2 and 2e6.1)

- Following the conference, write the conference report and submit it for acknowledgment by yourself, the Dean and the evaluatee.
- For probationary faculty, the Dean will write the conference report.
- Please submit reports promptly so there is time for the Dean to complete her portion of the evaluation and for the evaluatee to acknowledge receipt before the end of the semester.

CONFERENCE REPORT

**Probationary and full-time 16
& 1st 8 week – Dec. 9**

**Adjunct faculty and 2nd 8 week
– Dec. 16**

**Needs Improvement and
Unsatisfactory reports are due
within 1 week of the conference
and at least by Dec. 9.**

- Review the conference report and submit your acknowledgment in Perform that you received it.
- Your acknowledgment of receipt is the final step in the evaluation process and must be completed before the semester ends.

Software and Support

PERFORM (formerly called Reviewsnap)

- All evaluation documents will be completed in Perform (formerly called Reviewsnap).
- Perform can be accessed through myECC (in the menu on the right), using your ECC email login and password.
- For help, please read the Perform Guide and watch the Employee Training video on the Perform homepage.

STUDENT SURVEYS

- The Online and Digital Education office will upload the surveys into evaluatees' Canvas shells and give evaluators access to the classes. This office also processes and distributes the results to the divisions.
- Please contact Gema Perez with questions (gperez@elcamino.edu).

GENERAL QUESTIONS

- For all other questions, please contact either Cecelia Mataalii (cmataalii@elcamino.edu) or Dean Chris Gold (cgold@elcamino.edu).

Psychology Position Request and Adjunct Search

- BSS Position Requests
 - Ethnic and Social Justice Studies
 - Human Development
 - Anthropology
 - Childhood Education
 - Sociology
 - Psychology
 - History
- 40 Campus-wide Requests
- Committee prioritization should be announced on Wed., Nov. 23.
- President will review the list and make final decisions about hiring.
- We haven't been told the Faculty Obligation Number, but it is likely the College will hire at least 20.




BSS Holiday Potluck




WEDNESDAY, DECEMBER 14, 2022
11:00AM - 3:00PM

SIGN UP SHEET AVAILABLE IN THE LINK OR
BSS FACULTY FILES VIA TEAMS



The Division Office will provide dessert.



SUMMER IN MADRID, SPAIN

June 19–July 16, 2023



Spend the summer in Madrid with El Camino College! Madrid becomes an extension of your classroom as you explore Spanish parks, monuments, churches and museums while attending classes taught by ECC faculty. Participants live in student apartments located throughout the city and have the opportunity to explore Spain with day excursions.

COURSES

Spanish 1: Elementary Spanish (5 units)
Spanish 52A: Spanish for Native Speakers (5 units)
Ethnic Studies 5: Chicano Culture (3 units) History
154: A History of Mexico (3 units)

PROGRAM PRICE: \$3,500

Price does not include airfare, ECC tuition and fees, or meals.

CONTACTS

Xocoyotzin Herrera
310-660-3593, x3411 | xherrera@elcamino.edu

Argelia Andrade
310-660-3593, 5335 | aandrade@elcamino.edu

For more info, visit www.elcamino.edu/studyabroad

New Building – Move-in Plans and Selecting Officemates

- The construction is delayed, and we do not have a move-in date.
- Best case scenario – Spring 2023.
- Most likely case scenario – Fall 2023.
- Our Division will be making simultaneous moves according to the original plans.
 - Art History and Communications Studies will move to SOCS.
 - The remaining BSS disciplines, will move to the new BSS building.

Sticking to the Original Plan

Existing SOCS Building

Faculty offices and all on campus classes for the following disciplines will be housed in the existing SOCS building:

- Art History
- Communication Studies

The SOCS building will also house some lecture based on-campus classes for these programs:

- Film
- Photography

1/3rd of on-campus classes for the following disciplines will be held in SOCS:

- Anthropology, Childhood Education, Economics, Ethnic and Social Justice Studies, History, Human Development, Philosophy, Political Science, Psychology, Sociology.

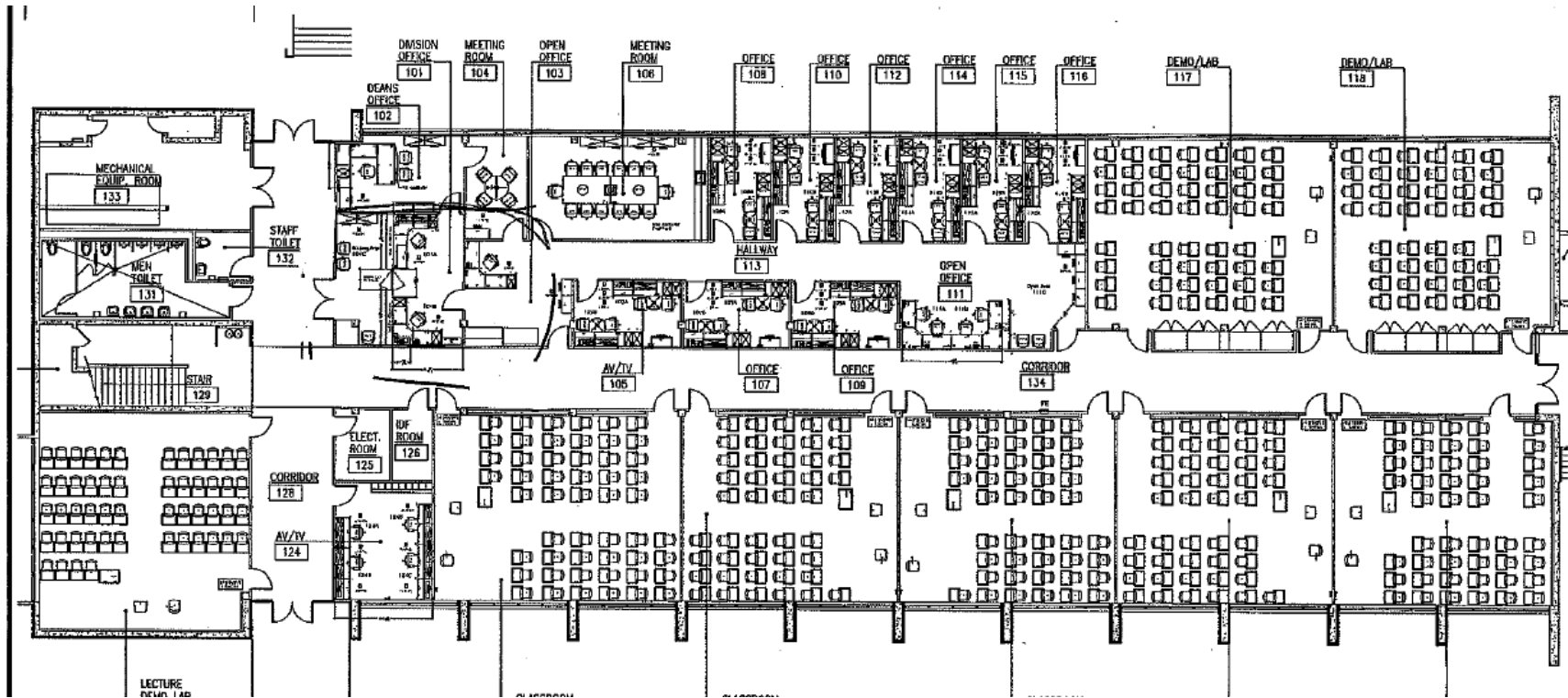
Forensics will also be housed in SOCS, potentially occupying the large and small conference rooms.

An Associate Dean and staff person will likely occupy the current Dean's office and reception area.

New BSS Building

Faculty offices and 2/3rds of on-campus classes for the following disciplines will be housed in the new BSS building:

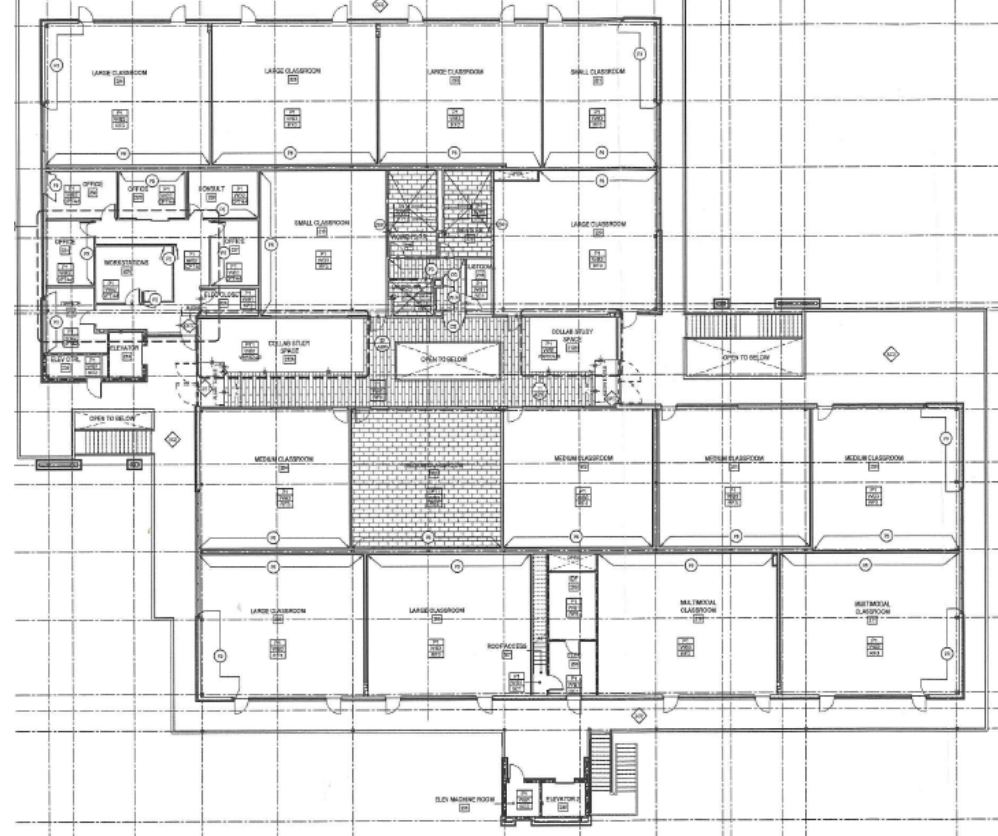
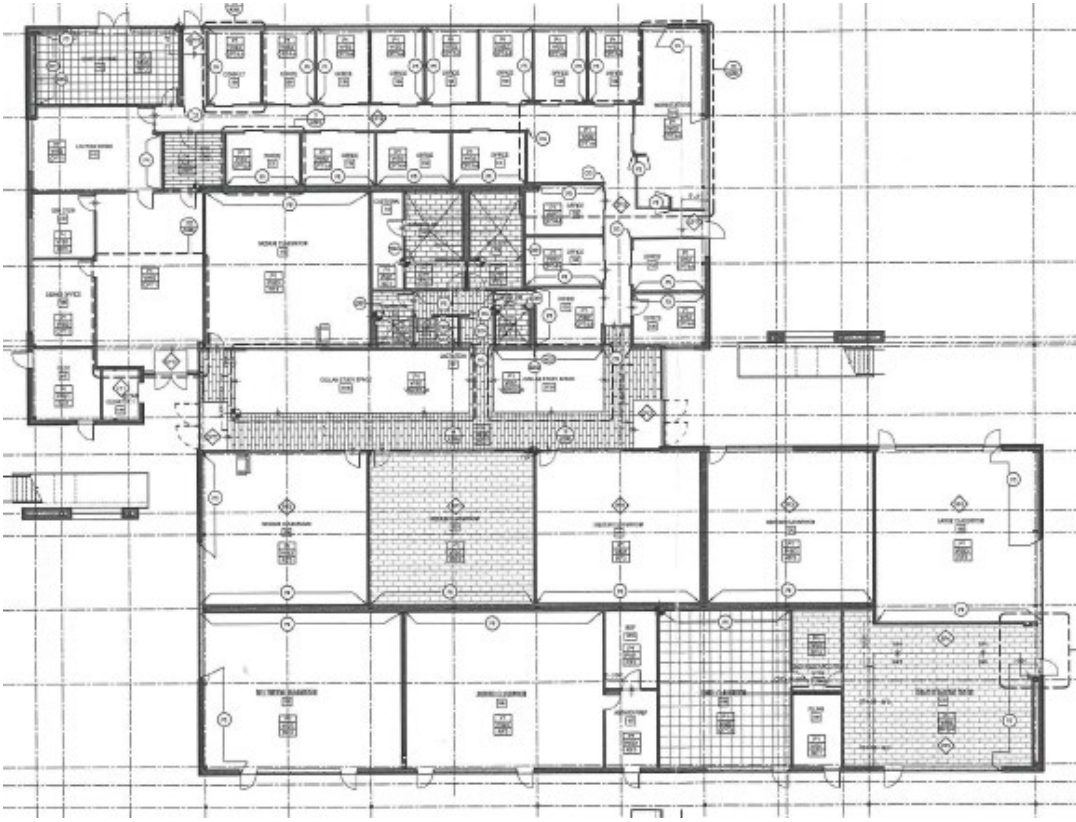
- Anthropology
- Childhood Education
- Economics
- Ethnic and Social Justice Studies
- History
- Human Development
- Philosophy
- Political Science
- Psychology
- Sociology



- 10 total faculty offices
 - 4 offices: COMS
 - 3 offices: AHIS
 - 3 offices: Adjunct faculty and/or new FT faculty.
- Mailroom will serve COMS and AHIS faculty.
- Computers and printer in mailroom.
- Front office – Associate Dean’s Office and Clerical at front desk.
- Forensics – small and big conference rooms.

SOCS Building (Comms. Studies and Art History)

Selecting Officemates

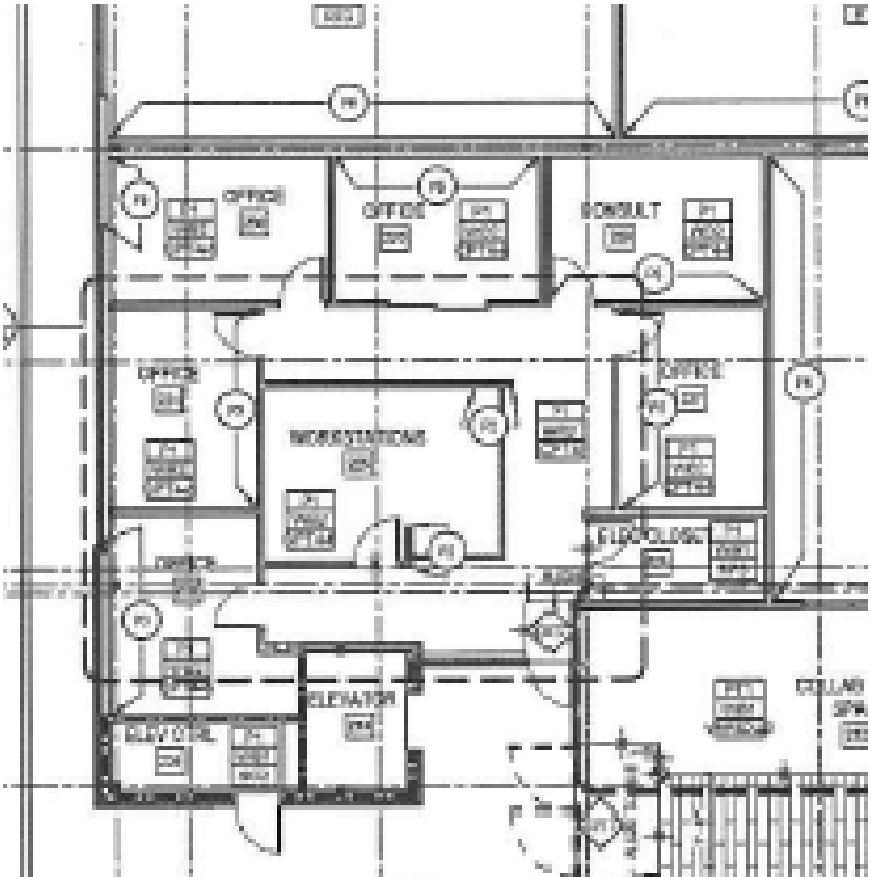


Selection Procedure – BSS Offices – 20 Offices

First Floor – 14 available offices



Second Floor – 6 available offices



Selection Procedure – BSS Offices – 20 Offices

- By seniority, faculty members will select an officemate and an office beginning with the most senior faculty member and proceeding according to seniority.
- Please email your Division Council rep (Renee Galbavy) if you don't like this approach and have an alternate suggestion.

Summer Section Count

Course	Summer 2020 (32 sections)	Summer 2021 (29 sections)	Summer 2022 (27 sections)
101	12	10	13
102	2	2	1
103	1	2	2
107	3	2	2
109A	2	3	2
109B	3	4	2
115	3	2	1
116	6	4	4

Fall Section Count 2020-22

Class	Fall 2020 (75 sections)	Fall 2021 (71 sections)	Fall 2022 (77 sections)
101	28	26	37
101H	1	1	1
102	3	3	3
103	9	7	6
103H	1	2	1
107	5	4	4
108	2	2	2
109A	4	4	3
109B	6	7	6
110	?	0	1
112	2	2	2
115	4	3	3
116	9	9	7
119	1	1	1

Spring and Fall 2022 Schedule & Enrollment by Modality

Week 3 snapshot

Spring 2022

Total Sections – 75 sections

Seats Filled – 2,359

Overall Fill Rate – 74% fill rate

Online – 45 sections, 91% fill rate

On Campus – 15 sections, 39% fill rate

Hybrid – 8 sections, 58% fill rate

Live Online – 3 sections, 70% fill rate

Dual Enrollment – 4 sections, 48%

Fall 2022

Total Sections – 78 sections

Seats Filled – 2,869

Overall Fill Rate – 85% fill rate

Online – 52 sections, 90% fill rate

On Campus – 14 sections, 78% fill rate

Hybrid – 8 sections, 69% fill rate

Dual Enrollment – 4 sections, 57%

Assessments

Spring 2022

Outstanding Assessment: PSYC 102 -
Julio

Spring 2022

Adjunct SLO Assessment Stipends

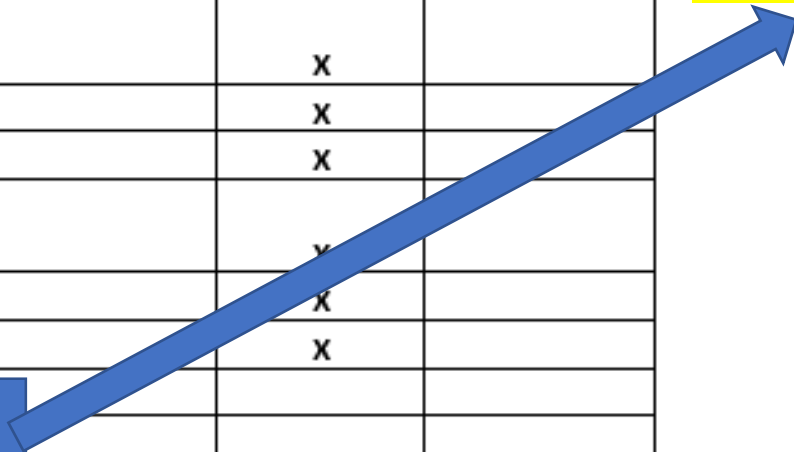
- Paid through the Academic Affairs office – waiting for accounts to be funded by Fiscal.

Fall 2022

PSYC 101H SLOs 1,2,3 – Amy
PSYC 110 SLOs 1,2,3 – Michael
PSYC 115 SLOs 1,2,3 – Renee
PSYC 117 SLOs 1,2,3 – Renee
PSYC 119 SLOs 1,2,3 – Angela
PSYC 103 & 103H SLOs 1,2,3 - Amy
PSYC 101 SLOs 1,2,3 – Julio
PSYC 108 SLOs 1,2,3 – Julio
PSYC 109A SLOs 1,2,3 – Yun

Course Review				
Course Prefix & Number	Current Descriptive Title	CTE 2-year Review	6-Year Review	Curriculum Office Use
AHIS 106	Cross Cultural Art - inactivate			
CDEV 129	Introduction to Program Administration	X		
CDEV 130	Principles of Program Administration	X		
CDEV 131	Supervising and Mentoring Adults	X		
CDEV 152	Curriculum and Strategies for Children with Special Needs	X		
CDEV 165	Autism, ADHD, Physical and Health Impairments	X		
HIST 105	Women and American History from the Colonial Era to 1877		X	
HIST 108	United States History: The American Indian Experience		X	
HIST 114	History of the Asian American in the United States		X	
POLI 1	Governments of the United States and California		X	
POLI 1H	Honors Governments of the United States and California		X	
POLI 5	Ethnicity in the American Political Process		X	
SOCI 107	Issues of Race and Ethnicity in the United States		X	
SOCI 109A	Introduction to Statistics and Data Analysis for the Behavioral Sciences		X	
SOCI 109B	Research Methods in the Behavioral Sciences		X	
SOCI 110	Introduction to Social Work		X	
PHIL	Medical Ethics (new course)			
PSYC	Psychology of Stress, Illness and Trauma (new course)			
SOCI	Medical Sociology (new course)			

Curriculum Committee and Departments
Please quickly review the Psychology of Stress, Illness and Trauma for the new Respiratory Care baccalaureate degree. It is due by tomorrow to CCC so it can be offered in Fall 2023. The degree cannot proceed without this classes in Fall 2023.



Committee Service, Annual Plan, and Website

Annual Plan – Angela

Division Council –Renee (Fall); Michael (Spring)

Division Curriculum Committee – Amy

Load Committee – Julio

SLO Committee – Angela and Amy

Area Council –Renee

Academic Technology Committee - Michael

Psychology Club/Psi Beta – Yun

[Psychology Webpage](#)

