



Political Science  
Department Meeting

Tuesday, Nov. 8, 2022

# Political Science Department

## Reports and Announcements

- Division Counsellor – Cheryl Kroll
- BSS Success Team Chair – David Reed
- Political Science Club

## Department Business

- Summer and Fall Scheduling and Enrollment
- Assessment Curriculum and Annual Plan
- Website
- New Building and Offices

## Counseling Updates for Department Meetings: Fall 2022

### Transfer Center Events:

<https://www.elcamino.edu/academics/transfer-center/events-and-workshops/index.aspx>.

*If your students could not attend the on campus university fair, please note that students may also book appointments with a wide variety of college/university representatives on our Transfer Center website as well. In person and virtual opportunities are available.*

*CSU/UC Application workshops began on October 1<sup>st</sup>. Both in person and virtual options will be available through the end of November. Students will sign up on the Transfer Center website.*

*In person CSULB tour coming soon!*

### Career Center Events:

<https://www.elcamino.edu/support/careers/index.aspx>

New meta major resources have been added to this website and students can now access job opportunities here as well.

### Scheduling Counseling Appointments:

Students are now able to book appointments via this link:

<https://www.elcamino.edu/support/counseling/appointments.aspx>

**IF THEY HAVE TROUBLE, FEEL FREE TO REFER THEM TO ME DIRECTLY!**

### Meta Major Outreach

We finished reaching out to all new BSS meta major students for educational planning this semester and are now working on students who are close to graduating and may qualify for a degree.

We will be hosting Meta Major Con again this spring and have hosted two Coffee With a Counselor events this fall.

# ECC Connect Boosts Fall-to-Spring Persistence

Fall to Spring Persistence	Fall 2018	Fall 2019	Fall 2020	Fall 2021
<b>Connect Student</b>	<b>82%</b>	<b>80%</b>	<b>78%</b>	<b>71%</b>
In Support Program	88%	85%	85%	79%
Not in Support Program	71%	73%	71%	64%
American Indian	67%	92%	75%	78%
Asian	86%	84%	84%	75%
Black/African American	73%	73%	71%	65%
Hawaiian/Pacific Islander	84%	65%	73%	61%
Hispanic	83%	80%	77%	70%
Two or More Races	89%	79%	78%	75%
Unknown	67%	67%	73%	63%
White	83%	85%	80%	73%
<b>Non-Connect Student</b>	<b>71%</b>	<b>65%</b>	<b>63%</b>	<b>54%</b>
In Support Program	80%	73%	72%	64%
Not in Support Program	67%	62%	60%	50%
American Indian	77%	44%	65%	36%
Asian	78%	71%	67%	60%
Black or African American	61%	59%	58%	48%
Hawaiian/Pacific Islander	71%	60%	51%	58%
Hispanic	71%	64%	62%	53%
Two or More Races	76%	71%	66%	53%
Unknown	60%	53%	60%	54%
White	75%	67%	67%	56%

Recent data indicates that ECC Connect use by faculty has a positive effect on fall-to-spring persistence (11-16%).

In a time of decreased enrollment numbers, ECC Connect use by faculty is more important than ever!

# Affinity Centers

---

- Social Justice Center (SJC)
- FIRST (Formerly incarcerated & impacted students)
- Black Student Success Center (BSSC)
- LatinX Center (LXC)
- Asian, Pacific Islander, Native Hawaiian Center (APINH)
- Lesbian, Gay, Bi-Sexual, Transgender Plus Center (LGBT+)
- Immigrant Student Success Center (ISS)

# Summer 2022 Section Count

Course	Summer 2020 (20 sections)	Summer 2021 (17 sections)	Summer 2022 (16 sections)
1	18	15 +1 dual enrollment	12 +2 dual enrollment
7	1	1	1
10H	1	1	1

# Fall 2020-22 Section Count

<b>Class</b>	<b>Fall 2020 (40 sections)</b>	<b>Fall 2021 (40 sections)</b>	<b>Fall 2022 (41 sections)</b>
1	30	30	31
1H	1	1	1
2	2	2	2
3	1	1	1
5	1	1	1
7	2	2	2
10	2	2	2
10H	1	1	1

# Spring v. Fall 2022 Enrollment and Modality

(Week 3 Snapshot)

## Spring 2022

Total Sections – 43 sections

Seats Filled – 1,830

Overall Fill Rate – 75% fill rate

Online – 28 sections, 84.5% fill rate

On Campus – 10 sections, 51% fill rate

Hybrid – 4 sections, 57% fill rate

Dual Enrollment – 1 sections, 50%

## Fall 2022

Total Sections – 41 sections

Seats Filled – 1,466

Overall Fill Rate – 85% fill rate

Online – 25 sections, 90% fill rate

On Campus – 9 sections, 83% fill rate

Hybrid – 5 sections, 69% fill rate

Dual Enrollment – 2 sections, 62%



# PLOs/SLOs, Curriculum, Annual Plan, Website

## Fall SLO Assessments

- Eduardo

## Curriculum for Spring

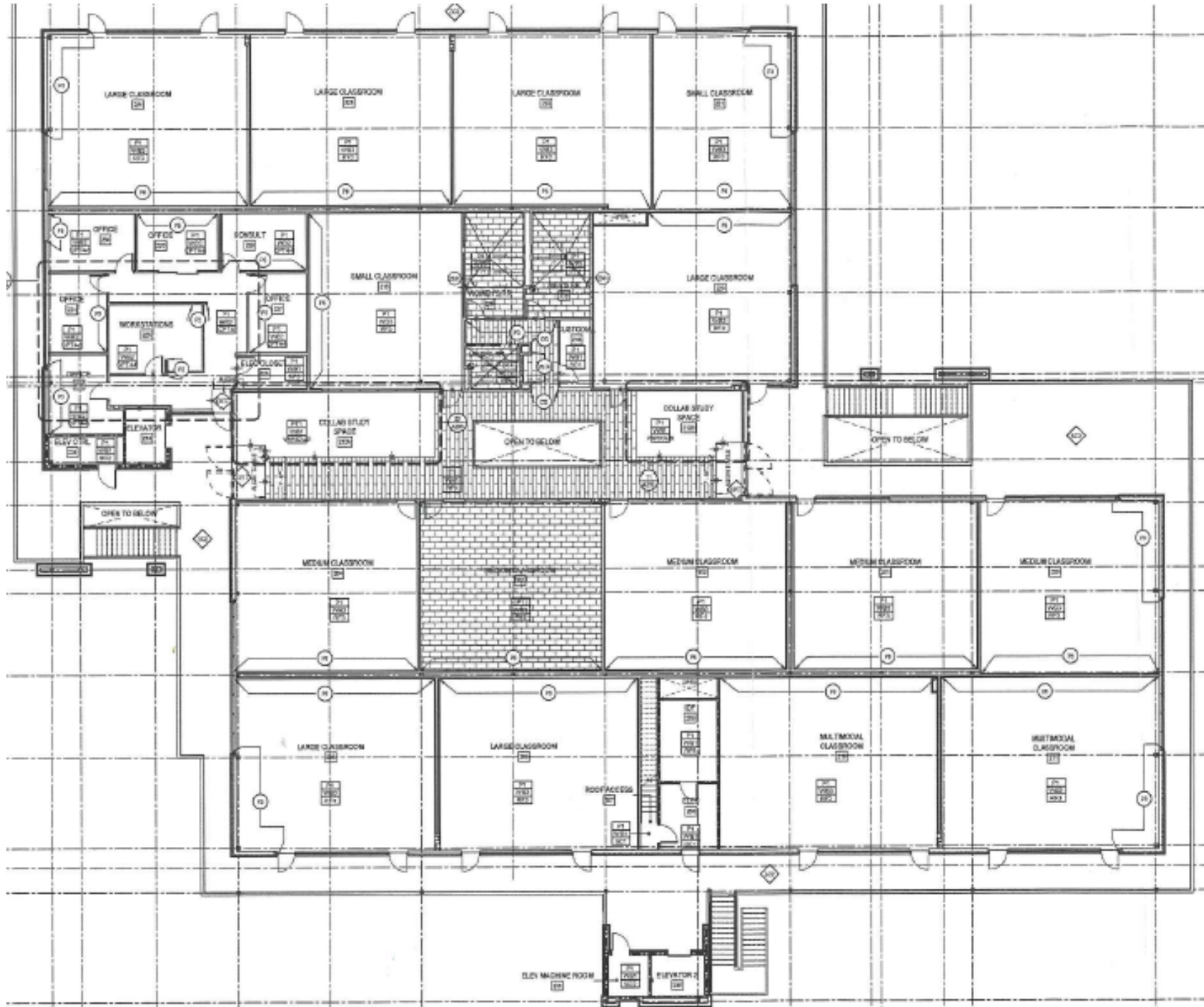
- Laurie

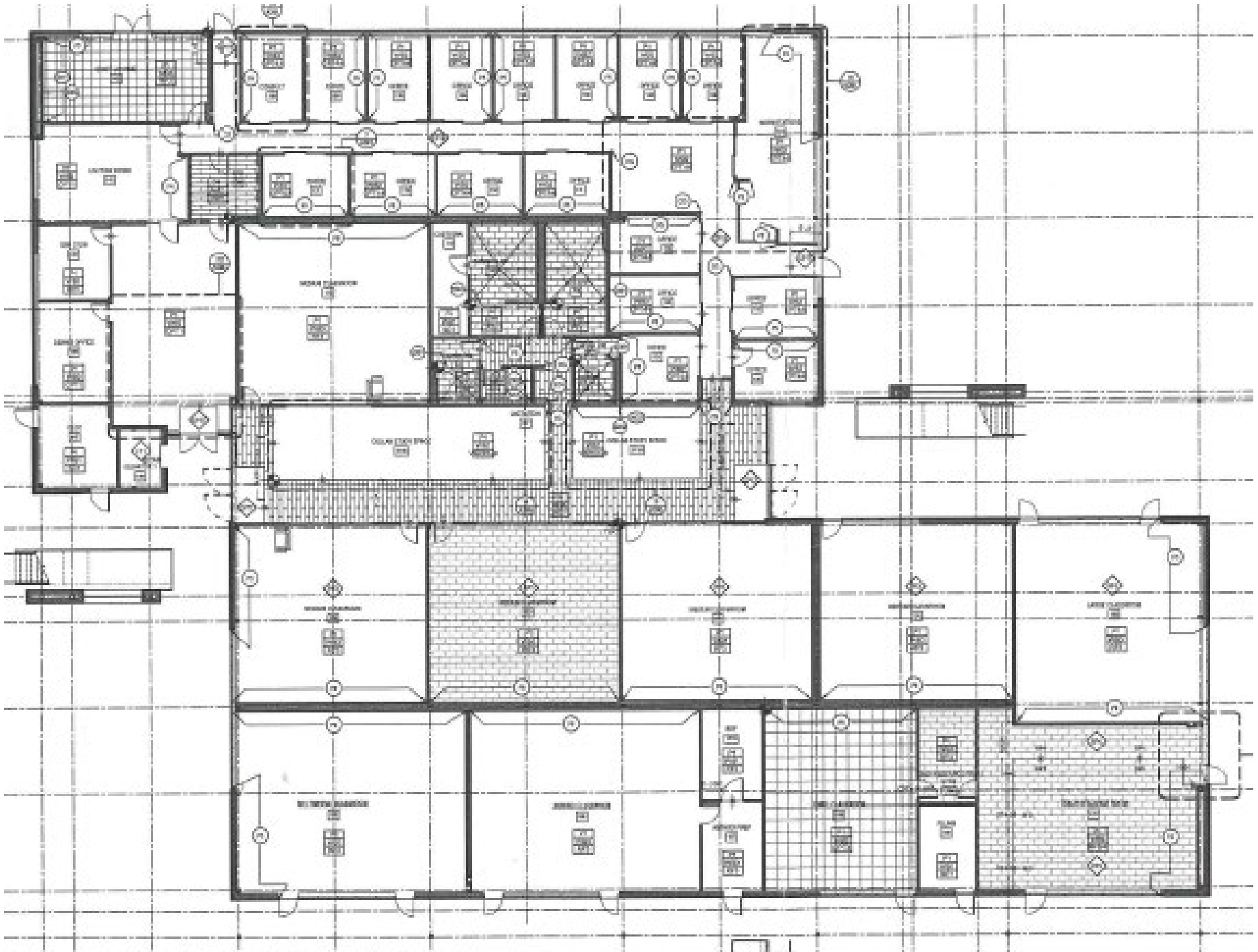
## Annual Plan

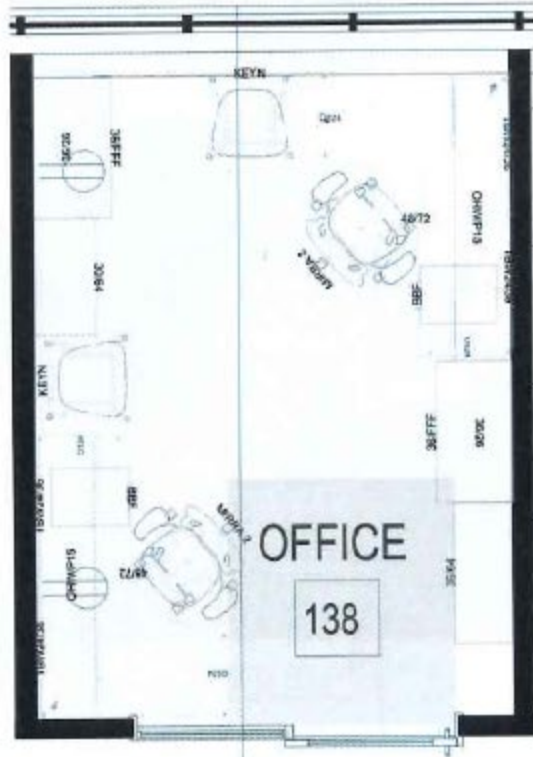
- David and Josh??

## Website

- Email Dean OER photos and content







**FACULTY OFFICE TYP1**

- (2) CANVAS FREESTANDING EXTENDED CORNER SURFACES
- (2) BBF PEDESTAL
- (2) OVERHEADS WITH SLIDING DOORS
- (2) 5H OPEN BOOKCASES
- (2) 5H HIGH LATERAL FILE WITH OPEN BOOKCASE UNITS
- (2) TASK CHAIRS
- (2) GUEST CHAIRS



Client Signature \_\_\_\_\_ Date \_\_\_\_\_

Note: Your approval is necessary for our order process to begin. Your signature here indicates that all fabrics and finishes are approved as shown. Fabrics and finishes are displayed for reference only and will vary by monitor and printer from the actual material color. Selections have been made with a physical sample or swatch for true color and detail.

05/06/2022

