



Philosophy
Department Meeting

Tuesday, October 18, 2022

Philosophy Department

Reports and Announcements

- Division Counselor – Cheryl Kroll
- BSS Success Team Chair – David Reed
- Affinity Centers
- Anyone want to serve on the Academic Integrity Committee?
- Club?

Department Business

- Summer and Fall Scheduling and Enrollment
- Assessment, Curriculum, and Annual Plan
- Website – Old v. New
- New Buildings and Offices

Counseling Updates for Department Meetings: Fall 2022

Transfer Center Events:

<https://www.elcamino.edu/academics/transfer-center/events-and-workshops/index.aspx>.

If your students could not attend the on campus university fair, please note that students may also book appointments with a wide variety of college/university representatives on our Transfer Center website as well.

CSU/UC Application workshops began on October 1st. Both in person and virtual options will be available through the end of November. Students will sign up on the Transfer Center website.

CSU Options Workshop: Tuesday, October 25th from 1-3 pm via Zoom. Topics include admissions basics, transfer, housing, financial aid and campus highlights. Students sign up on the Transfer Center Website.

UC Options Workshop: Thursday, October 27th from 1-3 pm via Zoom. Same topics but for UC and students sign up on Transfer Center website.

USC Admissions Workshop: Wednesday, October 26th from 12-1. Location: SSB 200 and Zoom.

In person UCLA Tour: Friday, October 28th.

In person CSULA and CSUN Tours: Saturday, November 5th.

Students sign up in the Transfer Center and must give a \$5 refundable deposit.

Career Center Events:

<https://www.elcamino.edu/support/careers/index.aspx>

New meta major resources have been added to this website and students can now access job opportunities here as well.

Scheduling Counseling Appointments:

Students are now able to book appointments via this link: <https://www.elcamino.edu/support/counseling/appointments.aspx>

Meta Major Outreach

We are reaching out to all new BSS meta major students for educational planning this semester as well as to students who are close to graduating and may qualify for a degree.

We will be hosting Meta Major Con again this spring and hosted a Coffee With a Counselor event this week.

ECC Connect Boosts Fall-to-Spring Persistence

Fall to Spring Persistence	Fall 2018	Fall 2019	Fall 2020	Fall 2021
Connect Student	82%	80%	78%	71%
In Support Program	88%	85%	85%	79%
Not in Support Program	71%	73%	71%	64%
American Indian	67%	92%	75%	78%
Asian	86%	84%	84%	75%
Black/African American	73%	73%	71%	65%
Hawaiian/Pacific Islander	84%	65%	73%	61%
Hispanic	83%	80%	77%	70%
Two or More Races	89%	79%	78%	75%
Unknown	67%	67%	73%	63%
White	83%	85%	80%	73%
Non-Connect Student	71%	65%	63%	54%
In Support Program	80%	73%	72%	64%
Not in Support Program	67%	62%	60%	50%
American Indian	77%	44%	65%	36%
Asian	78%	71%	67%	60%
Black or African American	61%	59%	58%	48%
Hawaiian/Pacific Islander	71%	60%	51%	58%
Hispanic	71%	64%	62%	53%
Two or More Races	76%	71%	66%	53%
Unknown	60%	53%	60%	54%
White	75%	67%	67%	56%

Recent data indicates that ECC Connect use by faculty has a positive effect on fall-to-spring persistence (11-16%).

In a time of decreased enrollment numbers, ECC Connect use by faculty is more important than ever!

Affinity Centers

- Social Justice Center (SJC)
- FIRST (Formerly incarcerated & impacted students)
- Black Student Success Center (BSSC)
- LatinX Center (LXC)
- Asian, Pacific Islander, Native Hawaiian Center (APINH)
- Lesbian, Gay, Bi-Sexual, Transgender Plus Center (LGBT+)
- Immigrant Student Success Center (ISS)

Summer 2022 Section Count

Course	Summer 2020 (9 sections)	Summer 2021 (8 sections)	Summer 2022 (6 sections)
101	5	4	4
103	2	2	1
105	1	1	1
106	1	1	0

Fall Section Count - 2020-22

Class	Fall 2020 (22 sections)	Fall 2021 (19 sections)	Fall 2022 (21 sections)
101	10	7	9
101H	1	1	1
103	3	2	3
105	2	2	2
106	3	3	2
107	0	1	1
111	1	1	1
112	1	1	1
115	1	1	1

Spring v. Fall 2022 Enrollment and Modality

(Week 3 Snapshot)

Spring 2022

Total Sections – 22 sections

Seats Filled – 586

Overall Fill Rate – 64% fill rate

Online – 13 sections, 88% fill rate

On Campus – 6 sections, 24% fill rate

Live Online – 1 section, 16% fill rate

Hybrid – 2 sections, 45% fill rate

Fall 2022

Total Sections – 21 sections

Seats Filled – 646

Overall Fill Rate – 72% fill rate

Online – 14 sections, 83% fill rate

On Campus – 5 sections, 51% fill rate

Hybrid – 2 sections, 44% fill rate

PLOs/SLOs, Curriculum, Annual Plan

Spring Assessments

- DONE!

Fall Assessments (Randy)

Curriculum (Roberto)

- Medical Ethics (Felipe)
- New Courses (Roberto – Inductive Logic and Latin American History)

Annual Plan (Felipe)

Website – Old and New



Section Menu 

[Home](#) / [Academics](#) / [Divisions](#) / [Behavioral & Social Sciences](#) / **Philosophy**

PHILOSOPHY

An education in Philosophy will provide students with:


- An enriched vocabulary, useful in any field you are considering
- An understanding of some of the basic beliefs and values of various cultures
- An ability to argue more effectively, and to feel confident in explaining your position
- An ability to face the challenges of a diverse society with both perspective and autonomy

Contact Information:

Dr. Christina Gold, Dean
Office: Social Science Building, Room 101
Phone: 310-660-3735
Email: cgold@elcamino.edu

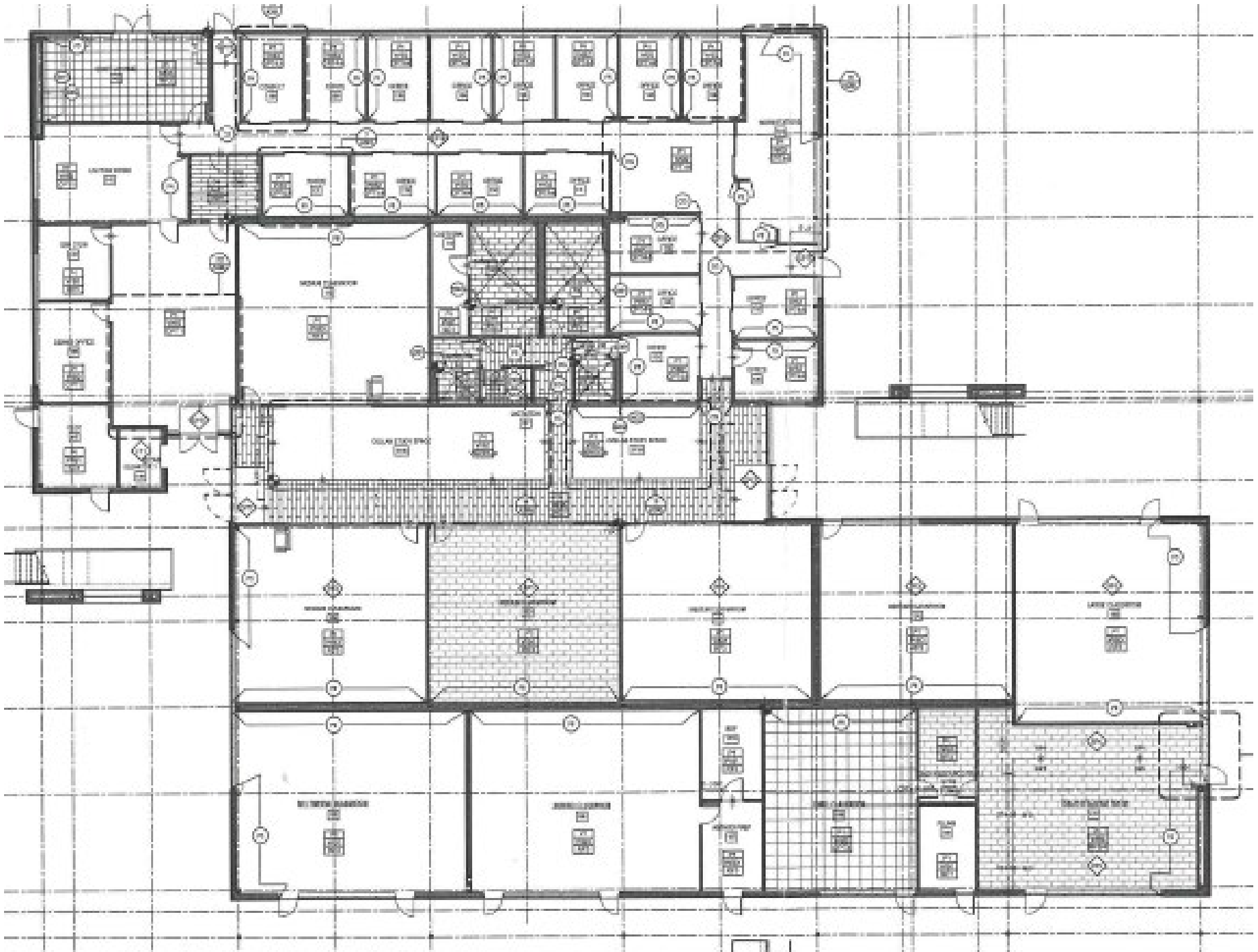
[Philosophy | El Camino College | Torrance, CA](#)

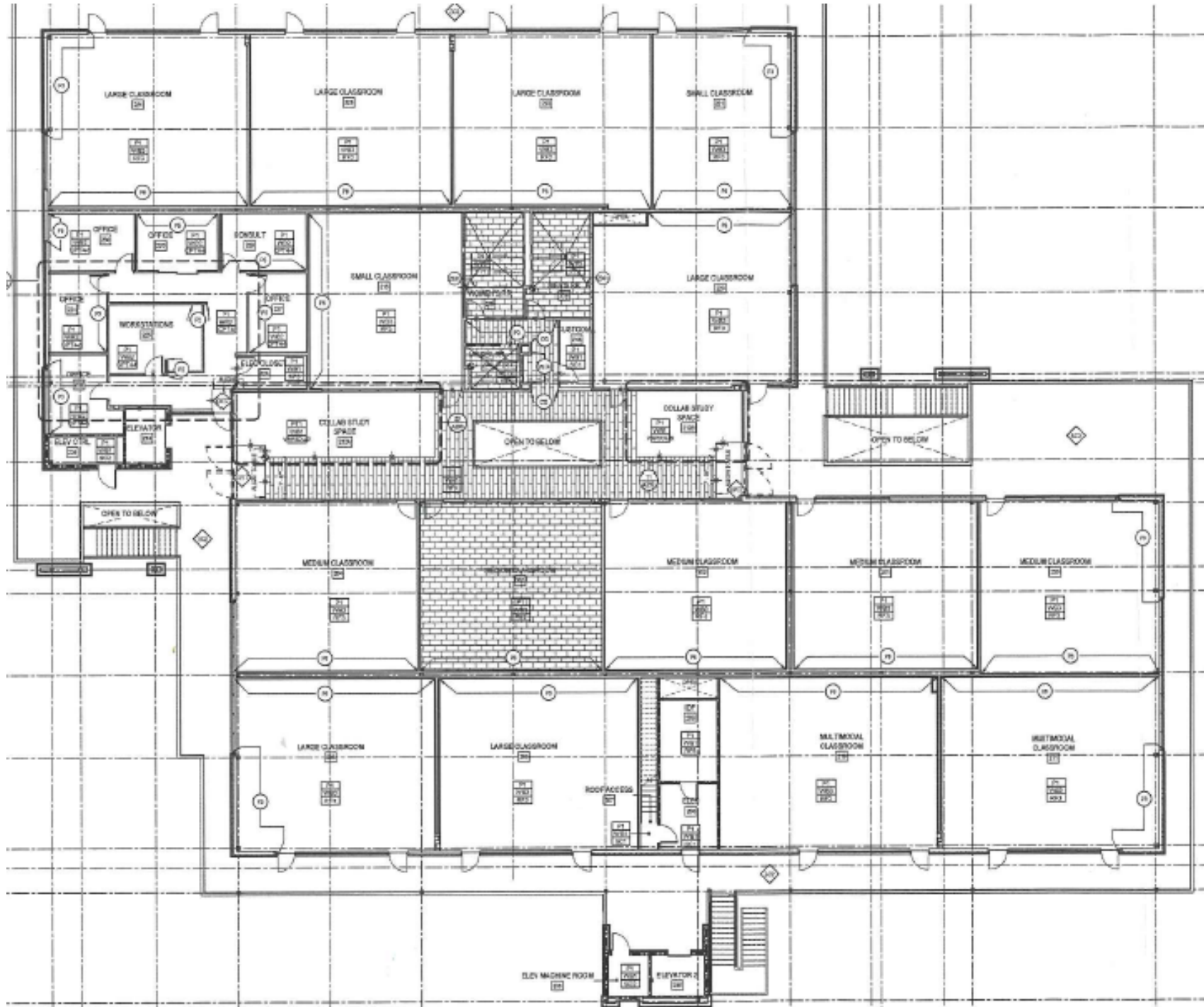


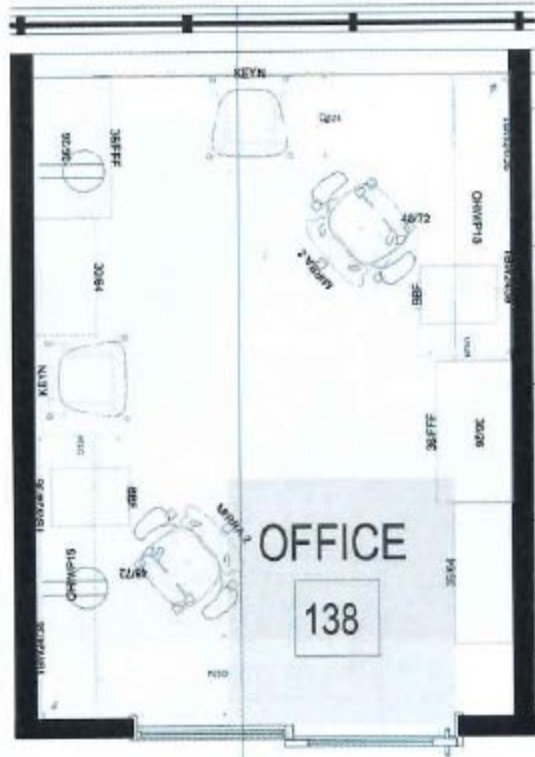
Section Menu 

[Home](#) / [Academics](#) / [Divisions](#) / [Behavioral & Social Sciences](#) / **Philosophy**

Philosophy means the love of wisdom. Some people believe that philosophy is esoteric and that philosophers think about meaningless topics, but philosophy helps us make wise decisions and therefore is the most practical of all subjects. In fact, your philosophy classes will help you in your other classes, in your personal life, and in your professional life







FACULTY OFFICE TYP1

- (2) CANVAS FREESTANDING EXTENDED CORNER SURFACES
- (2) BBF PEDESTAL
- (2) OVERHEADS WITH SLIDING DOORS
- (2) 5H OPEN BOOKCASES
- (2) 5H HIGH LATERAL FILE WITH OPEN BOOKCASE UNITS
- (2) TASK CHAIRS
- (2) GUEST CHAIRS



Client Signature _____ Date _____

Note: Your approval is necessary for our order process to begin. Your signature here indicates that all fabrics and finishes are approved as shown. Fabrics and finishes are displayed for reference only and will vary by monitor and printer from the actual material color. Selections have been made with a physical sample or swatch for true color and detail.

