



Human Development
Department Meeting

Tuesday, September 13, 2022

Human Development Department

Agenda

I) Reports

- a) Cheryl Kroll, Counseling
- b) David Reed, BSS Student Success Team – ECC Connect

II) Scheduling, Enrollment, and Student Age

III) Department Business

- a) Curriculum – Proposed CalGETC Pathway
- b) Non-credit Courses
- c) SLOs and Assessment
- d) Hyflex
- e) New Office Locations

Counseling Updates for Department Meetings: Fall 2022

Transfer Center Events:

<https://www.elcamino.edu/academics/transfer-center/events-and-workshops/index.aspx>.

On Campus University Fair: Thursday, September 22nd from 11-2 in the Student Services Plaza. Over 60 universities attending!

Please note that students may also book appointments with a wide variety of college/university representatives on our Transfer Center website as well.

September is TAG month and the Transfer Center will host TAG workshops all month, so please encourage students to sign up on the Transfer Center website if applicable.

CSU/UC Application workshops will commence on October 1st. Both in person and virtual options will be available. Students will sign up on the Transfer Center website.

Career Center Events:

<https://www.elcamino.edu/support/careers/index.aspx>

New resources have been added to this website and students can now access job opportunities here as well.

Scheduling Counseling Appointments:

All counselors were on Express through September 9th. Students are now able to book appointments via ECC Connect for the week of September 12th and beyond. We are no longer using Campus Calibrate. Link to book:

<https://www.elcamino.edu/support/counseling/appointments.aspx>

My office is still temporarily located in MBAH 453 until we move into our new space.

Meta Major Outreach

In addition to our gateway courses, we will be reaching out to all new BSS meta major students for educational planning this semester.

We will also begin to host "What Can I Do With a Major In?" workshops for our majors, beginning with psychology and sociology this semester.

We will likewise be participating in the Student Support Expo on Monday, September 19th and will provide students with additional meta major resources at that event.

ECC Connect Boosts Fall-to-Spring Persistence

Fall to Spring Persistence	Fall 2018	Fall 2019	Fall 2020	Fall 2021
Connect Student	82%	80%	78%	71%
In Support Program	88%	85%	85%	79%
Not in Support Program	71%	73%	71%	64%
American Indian	67%	92%	75%	78%
Asian	86%	84%	84%	75%
Black/African American	73%	73%	71%	65%
Hawaiian/Pacific Islander	84%	65%	73%	61%
Hispanic	83%	80%	77%	70%
Two or More Races	89%	79%	78%	75%
Unknown	67%	67%	73%	63%
White	83%	85%	80%	73%
Non-Connect Student	71%	65%	63%	54%
In Support Program	80%	73%	72%	64%
Not in Support Program	67%	62%	60%	50%
American Indian	77%	44%	65%	36%
Asian	78%	71%	67%	60%
Black or African American	61%	59%	58%	48%
Hawaiian/Pacific Islander	71%	60%	51%	58%
Hispanic	71%	64%	62%	53%
Two or More Races	76%	71%	66%	53%
Unknown	60%	53%	60%	54%
White	75%	67%	67%	56%

Recent data indicates that ECC Connect use by faculty has a positive effect on fall-to-spring persistence (11-16%).

In a time of decreased enrollment numbers, ECC Connect use by faculty is more important than ever!

Summer Section Count

Course	Summer 2020 (4 sections)	Summer 2021 (9 sections)	Summer 2022 (8 sections)
101	1	4	1
105	1	1	1
110	0	2	4
115	2	2	2

Fall Section Counts 2020-22

Class	Fall 2020 (32 sections)	Fall 2021 (30 sections)	Fall 2022 (35 sections)
101	6	9	10
105	4	4	5
107	0	0	1
110	17	12	13
110H	0	1	1
115	5	4	5

Program Collaborations Fall 2022

Dual Enrollment

- Lloyd (101,105)
- Lawndale High School (101, 101)

Puente (2 101s)

Project Success (2 110s)

Student Resource Center (110)

Honors Transfer Program (110H)

International Students Program (101)

myPATH with LGBTQIA+ (110)

STEM/MESA (101)

Transfer Center (107)

Warrior Toro Computer Science Pathway (101)

Fall 2022 – Enrollment by Modality

(Week 3 snapshot – does not include all dual enrollment and some second 8 week students who are not registered)

Total Sections – 31 sections (not including 4 dual enrollment sections)

Seats Filled - 785

Overall Fill Rate – 84% fill rate

Modality	Sections	Fill rate
Online	21	85%
On Campus	7	84%
Hybrid	3	82%

Spring v. Fall 2022 – Enrollment by Modality

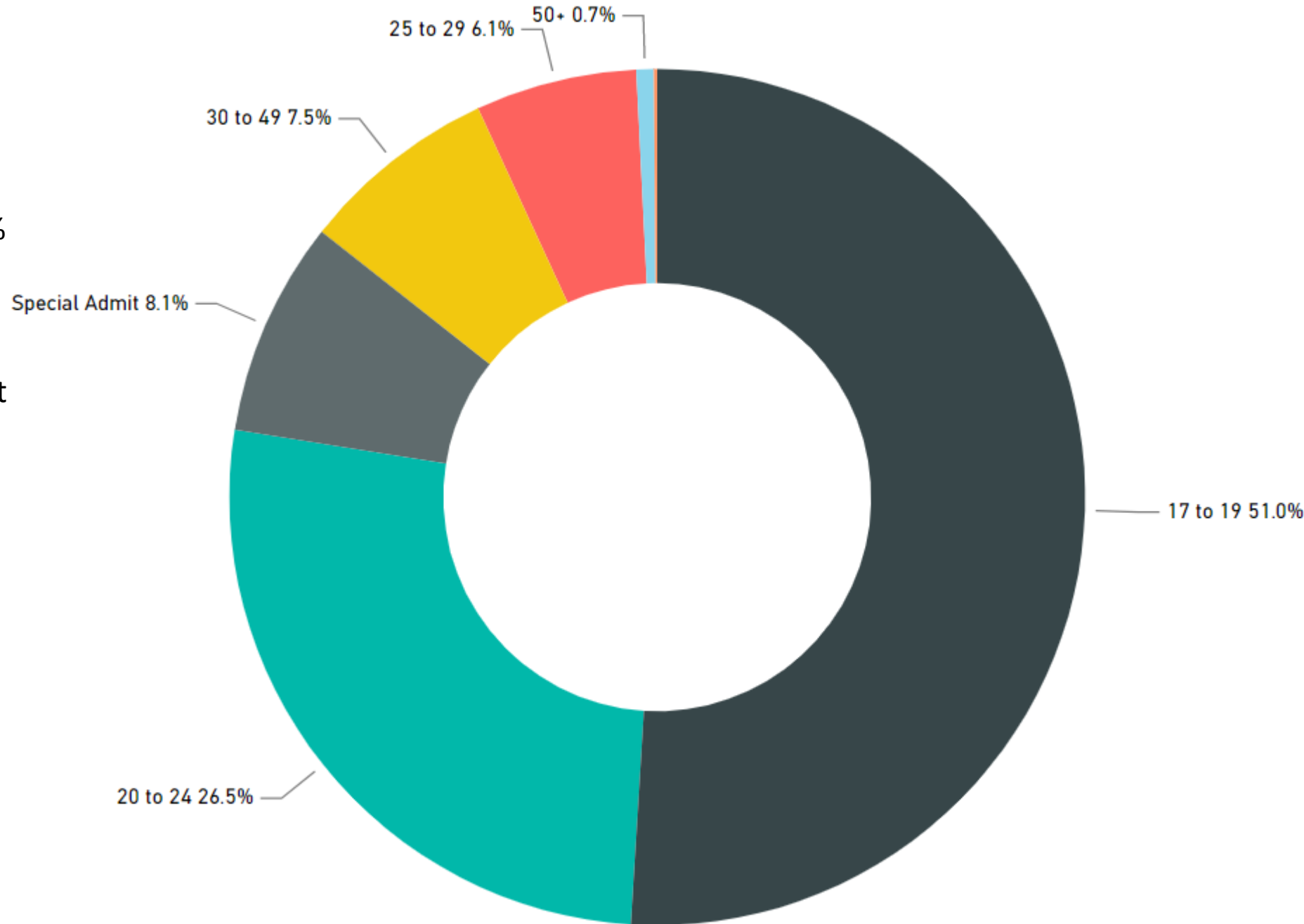
(Week 3 snapshot – does not include all dual enrollment and some second 8 week students who are not registered)

Spring 2022		
Modality	Sections	Fill rate
Online	14	80%
On Campus	6	55%
Hybrid	2	63%
Live Online	1	27%

Fall 2022		
Modality	Sections	Fill rate
Online	21	85%
On Campus	7	84%
Hybrid	3	82%

Human Development Students - Age

Human Development students are significantly younger than students across the college. 38% of ECC students are 19 years old or younger, versus 59% of Human Development students. As the District population ages, it may impact Human Development a little more than other programs. However, this may be offset by the expansion of dual enrollment.



Department Business

a) Curriculum

- No curriculum review for this year
- Proposed CalGETC pathway – Kristie

b) Non-credit Courses

c) SLOs and Assessment – Juli

- Spring 2022 completed!
- Fall 2022

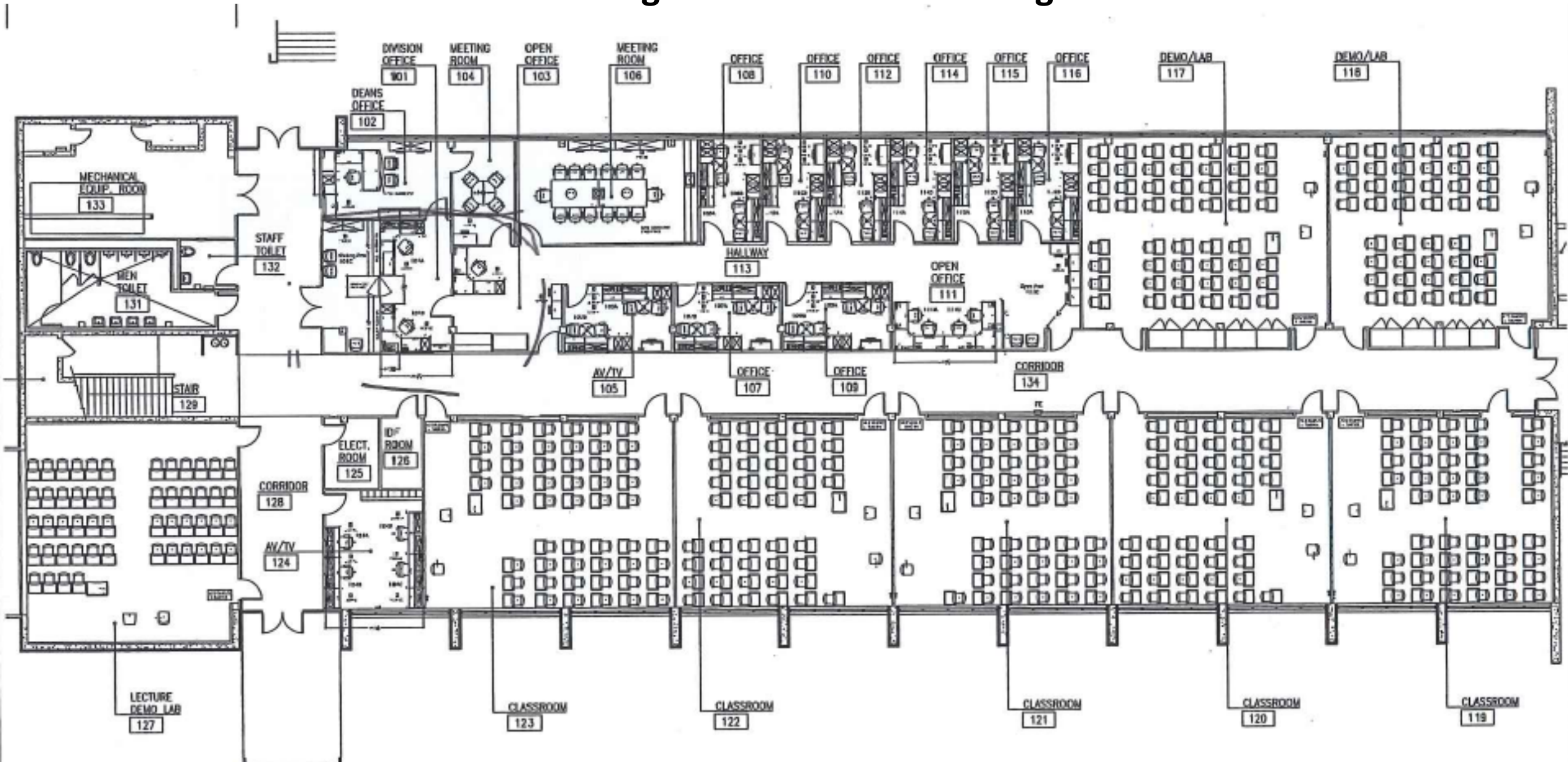
d) Hyflex (any interest?)

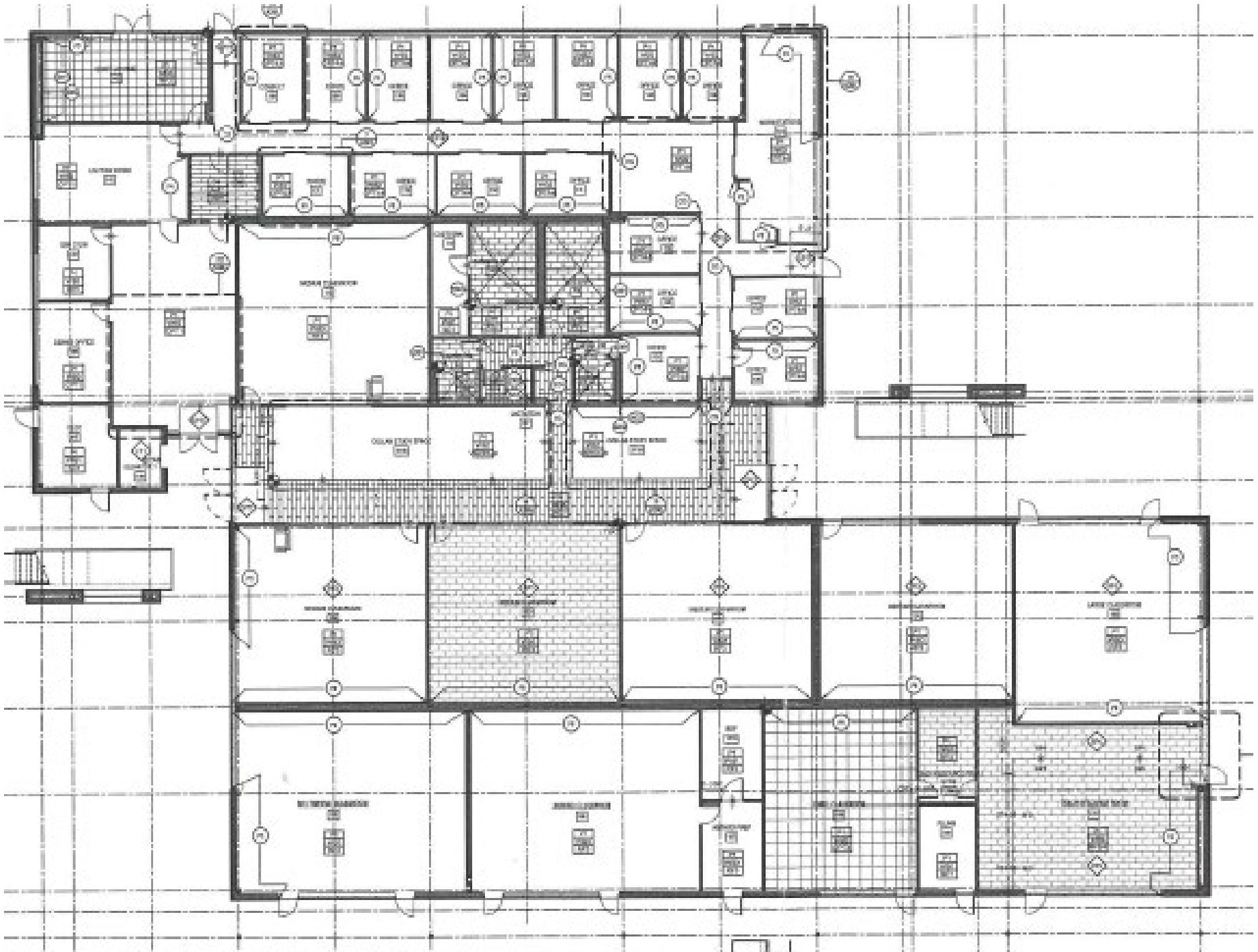
e) Offices in New BSS Building

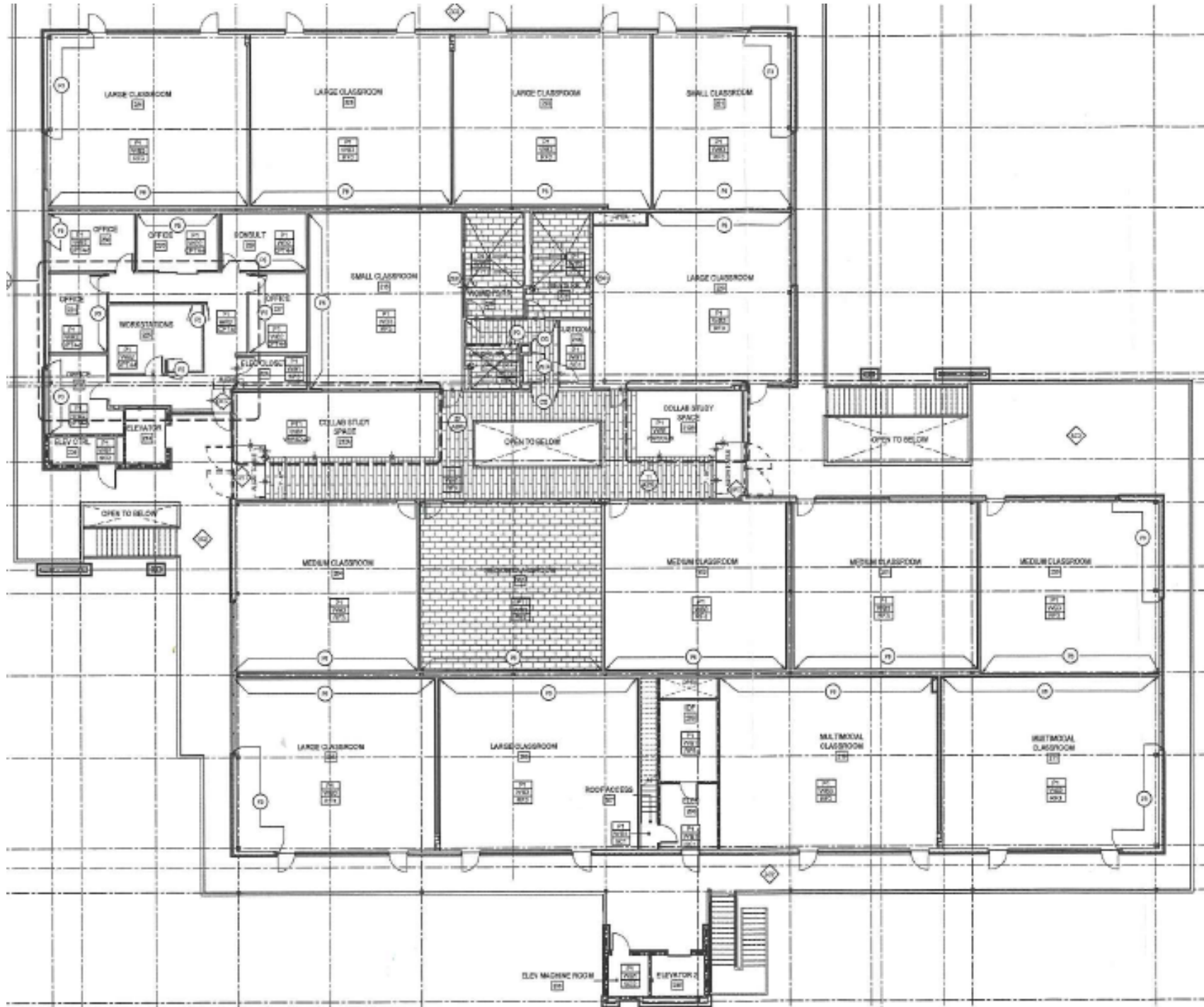
Proposed CalGETC pathway

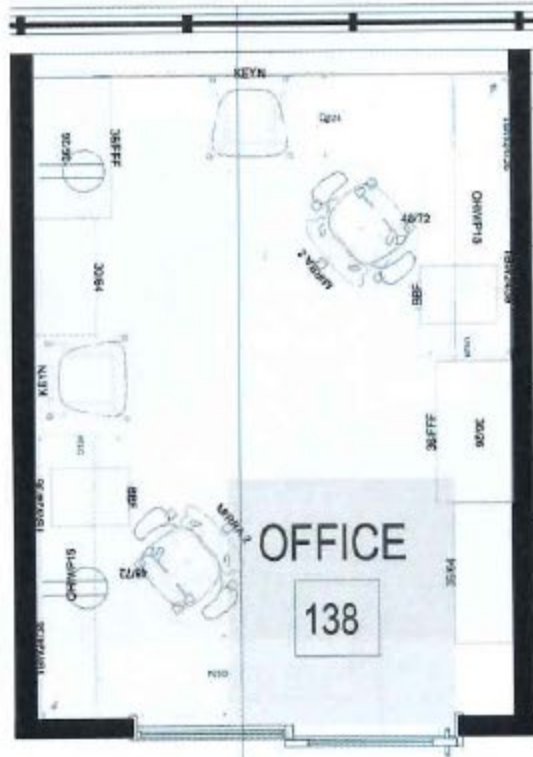
CalGETC Area	Subject	Courses/Units
1 – English Communication	English Composition Critical Thinking and Composition Oral Communication	1 course (3 units) 1 course (3 units) 1 course (3 units)
2	Mathematical Concepts and Quantitative Reasoning	1 course (3 units)
3 – Arts and Humanities	Arts Humanities	1 course (3 units) 1 course (3 units)
4	Social and Behavioral Sciences	2 courses (6 units)
5	Physical Science Biological Science Laboratory (for Phys/Bio course)	1 course (3 units) 1 course (3 units) (1 unit)
<i>N/A</i>	Life Long Learning and Self Development <i>(CSU upper division GE)</i>	
6	Language other than English (LOTE) <i>(Currently UC only, carries no units)</i>	
7	Ethnic Studies	1 course (3 units)
Total Courses (units)		<i>11 courses (34 units)</i>

Existing Social Sciences Building









FACULTY OFFICE TYP1

- (2) CANVAS FREESTANDING EXTENDED CORNER SURFACES
- (2) BBF PEDESTAL
- (2) OVERHEADS WITH SLIDING DOORS
- (2) 5H OPEN BOOKCASES
- (2) 5H HIGH LATERAL FILE WITH OPEN BOOKCASE UNITS
- (2) TASK CHAIRS
- (2) GUEST CHAIRS



Client Signature _____ Date _____

Note: Your approval is necessary for our order process to begin. Your signature here indicates that all fabrics and finishes are approved as shown. Fabrics and finishes are displayed for reference only and will vary by monitor and printer from the actual material color. Selections have been made with a physical sample or swatch for true color and detail.

05/06/2022

