

Anthropology Department Meeting

Tuesday, Oct. 4, 2022

Anthropology Department

Reports

- Counselor's Report
- David Reed, BSS Student Success Team

Business

- Scheduling and Enrollment
- Assessment, Curriculum and Club/Events
- New Building and Offices
- Anthropology Museum

Counseling Updates for Department Meetings: Fall 2022

Transfer Center Events:

<https://www.elcamino.edu/academics/transfer-center/events-and-workshops/index.aspx>.

If your students could not attend the on campus university fair, please note that students may also book appointments with a wide variety of college/university representatives on our Transfer Center website as well.

CSU/UC Application workshops began on October 1st. Both in person and virtual options will be available through the end of November. Students will sign up on the Transfer Center website.

Career Center Events:

<https://www.elcamino.edu/support/careers/index.aspx>

New meta major resources have been added to this website and students can now access job opportunities here as well.

Scheduling Counseling Appointments:

Students are now able to book appointments via this link:

<https://www.elcamino.edu/support/counseling/appointments.aspx>

My office is still temporarily located in MBAH 453 until we move into our new space.

Meta Major Outreach

In addition to our gateway courses, we will be reaching out to all new BSS meta major students for educational planning this semester.

We will be hosting Meta Major Con again in the spring but will explore other ways to apprise students of major/career options within our division via other events.

ECC Connect Boosts Fall-to-Spring Persistence

Fall to Spring Persistence	Fall 2018	Fall 2019	Fall 2020	Fall 2021
Connect Student	82%	80%	78%	71%
In Support Program	88%	85%	85%	79%
Not in Support Program	71%	73%	71%	64%
American Indian	67%	92%	75%	78%
Asian	86%	84%	84%	75%
Black/African American	73%	73%	71%	65%
Hawaiian/Pacific Islander	84%	65%	73%	61%
Hispanic	83%	80%	77%	70%
Two or More Races	89%	79%	78%	75%
Unknown	67%	67%	73%	63%
White	83%	85%	80%	73%
Non-Connect Student	71%	65%	63%	54%
In Support Program	80%	73%	72%	64%
Not in Support Program	67%	62%	60%	50%
American Indian	77%	44%	65%	36%
Asian	78%	71%	67%	60%
Black or African American	61%	59%	58%	48%
Hawaiian/Pacific Islander	71%	60%	51%	58%
Hispanic	71%	64%	62%	53%
Two or More Races	76%	71%	66%	53%
Unknown	60%	53%	60%	54%
White	75%	67%	67%	56%

Recent data indicates that ECC Connect use by faculty has a positive effect on fall-to-spring persistence (11-16%).

In a time of decreased enrollment numbers, ECC Connect use by faculty is more important than ever!

Summer 2020-22 Section Count

Course	Summer 2020 (9 sections)	Summer 2021 (9 sections)	Summer 2022 (9 sections)
1	6	4	4
1H	0	1	1
2	2	2	2
5	1	2	2

Fall Section Count 2020-22

Class	Fall 2020 (32 sections)	Fall 2021 (29 sections)	Fall 2022 (29 sections)
1	12	9	11
1H	1	1	1
2	7	6	5
3	1	1	1
4	2	2	2
5	6	6	5
6	0	1	1
7	0	1	1
8	1	0	0
11	2	2	2

Fall v. Spring 2022 Enrollment & Modality

(Snapshot in week three)

Fall 2022

Total Sections – 29 sections

Seats Filled - 965

Overall Fill Rate – 85% fill rate

Online – 20 sections, 90% fill rate

On Campus – 5 sections, 68% fill

Hybrid – 4 sections, 68% fill rate

Spring 2022

Total Sections – 29 sections

Seats Filled - 952

Overall Fill Rate – 85% fill rate

Online – 22 sections, 89% fill rate

On Campus – 3 sections, 47% fill

Hybrid – 4 sections, 84% fill rate

Assessment, Curriculum and Club/Events

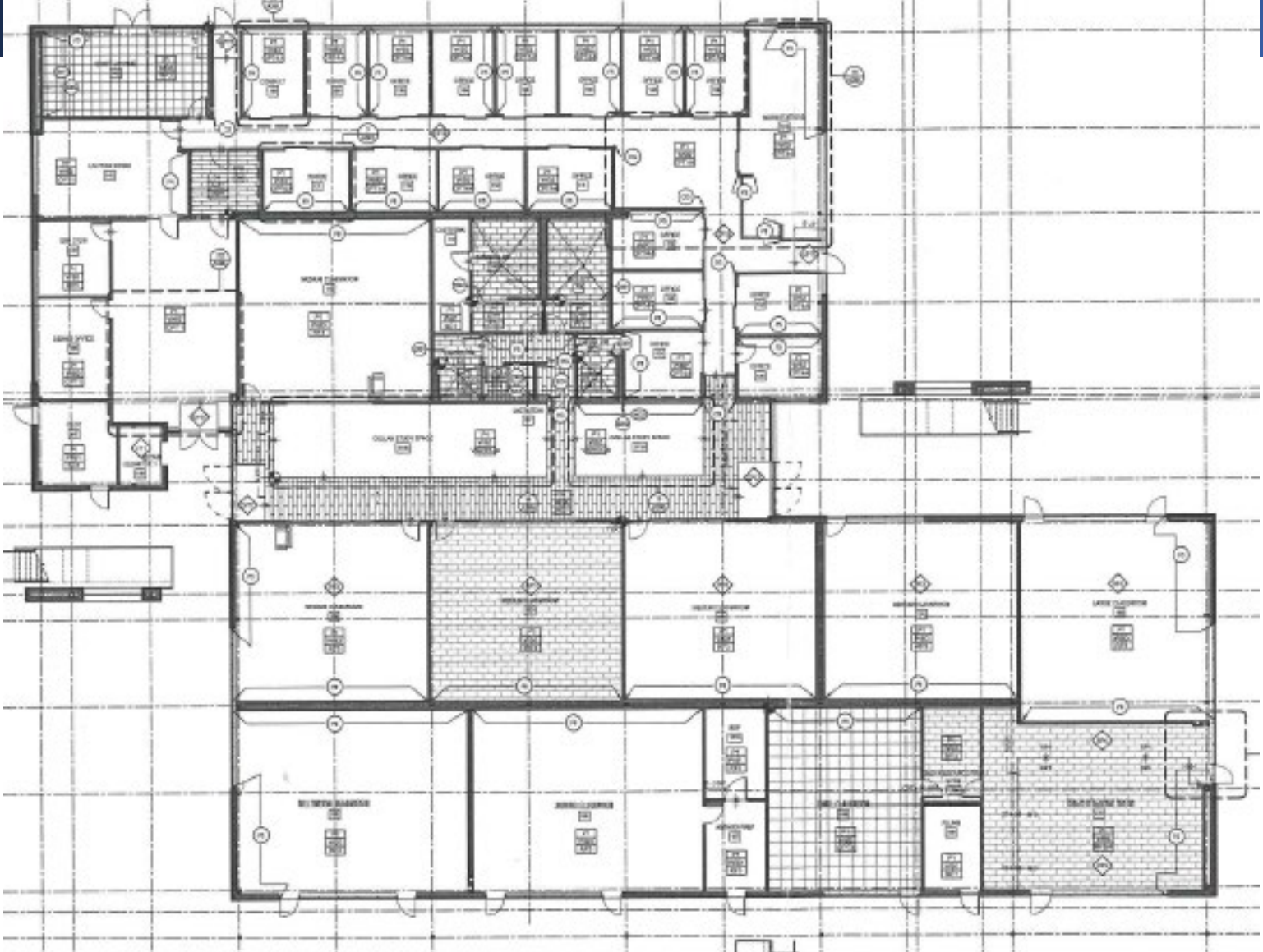
Assessment – Rodolfo

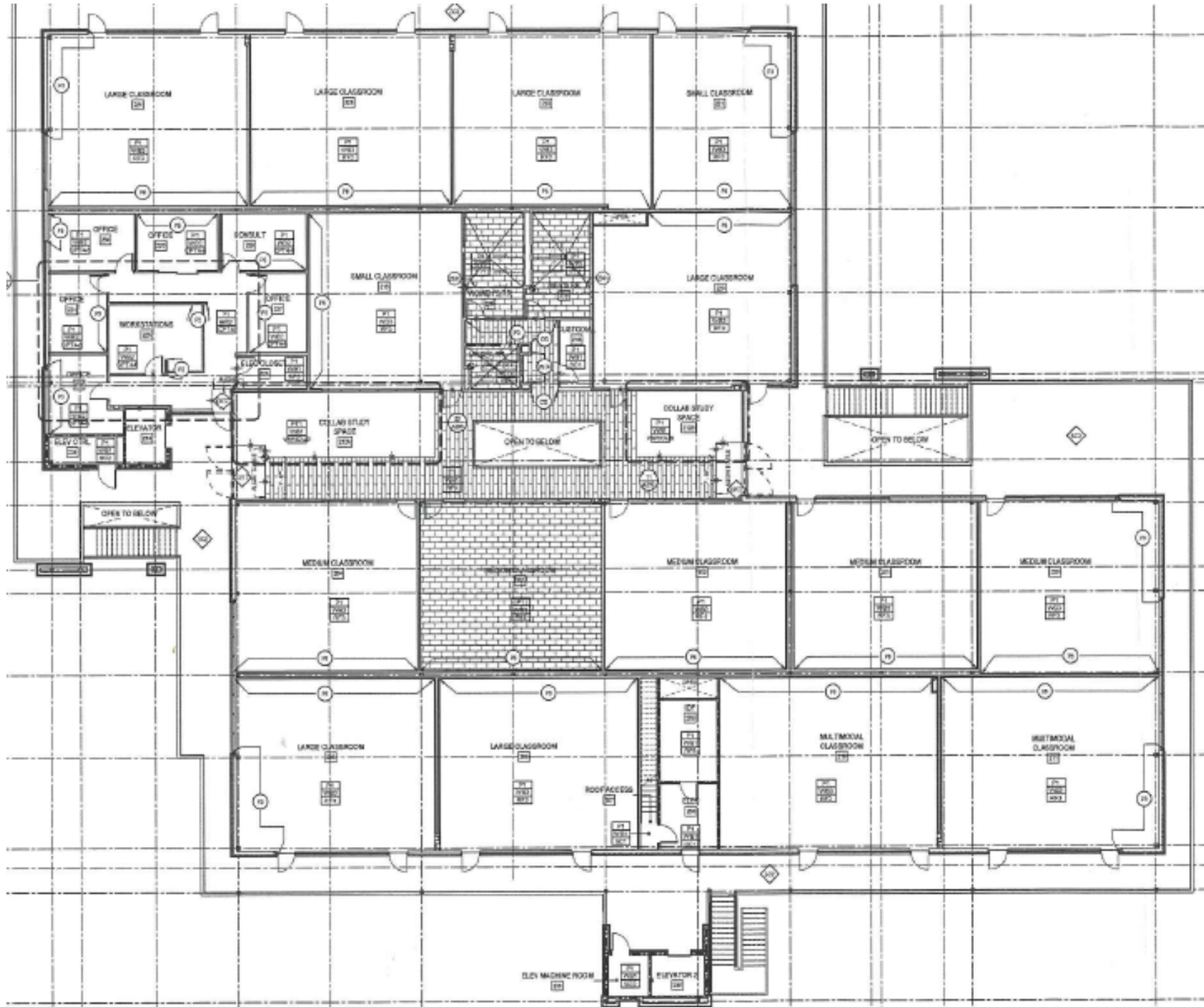
- Spring 2022 complete
- Fall 2022?

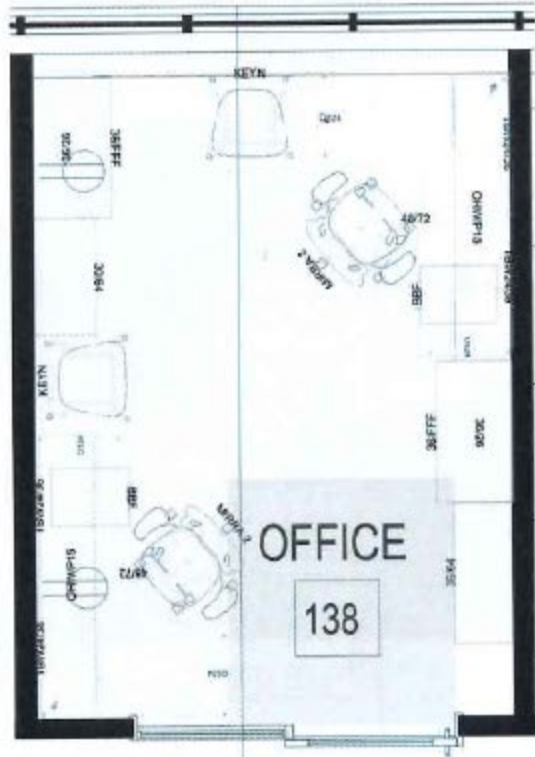
Curriculum – None for Fall 2022

Club/Events?

SOCS Building Move and Offices







FACULTY OFFICE TYP1

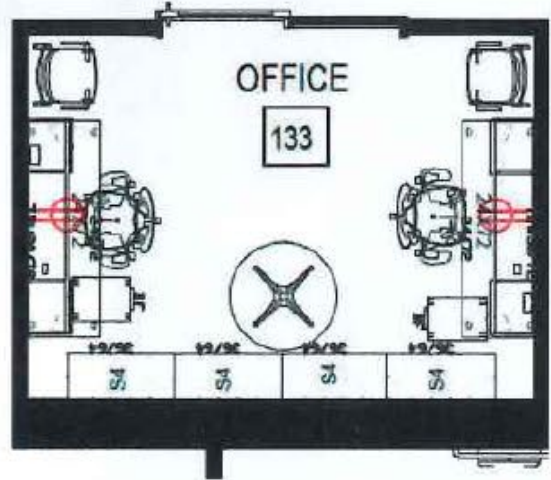
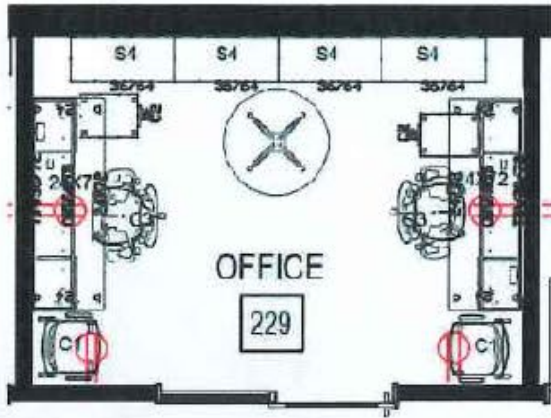
- (2) CANVAS FREESTANDING EXTENDED CORNER SURFACES
- (2) BBF PEDESTAL
- (2) OVERHEADS WITH SLIDING DOORS
- (2) 5H OPEN BOOKCASES
- (2) 5H HIGH LATERAL FILE WITH OPEN BOOKCASE UNITS
- (2) TASK CHAIRS
- (2) GUEST CHAIRS



Client Signature _____ Date _____

Note: Your approval is necessary for our order process to begin. Your signature here indicates that all fabrics and finishes are approved as shown. Fabrics and finishes are displayed for reference only and will vary by monitor and printer from the actual material color. Selections have been made with a physical sample or swatch for true color and detail.

05/06/2022



Anthropology Museum

Staffing

- Michael Miller, Director, 20%
- Rodolfo, 20% reassign
- Olivia Havens, Museum Clerk, 25 hours per week until end of June 2022

Cataloging - Catalogit

Construction and Signage (Marianne)

Packing and Moving

- Oliva – Packing is going well. May be ahead of schedule on the soft move to Art Complex. Most objects in cases are wrapped and packed. Need packing materials asap to stay on schedule.

Student Workers



Wooden box of skeleton "Ma...
Object/Artifact E-128



Wooden Serpent with Wheels
Object/Artifact E-127



Paper-mache green lizard
Art E-126



Paper-mache calavera del ca...
Art E-125



Sugar skull with decorations
Art E-124



Panda head maraca
Art E-123



Two men and devil miniature
Art E-122



Miniature mummy in an office
Art E-121



Pool Table with Skeleton Man
Art E-120



Small Skeleton Man Reading ...
Art E-119



Two Miniature Skeleton Men ...
Art E-118



Sugar Skull
Art E-117

Total Entries: 406
Total Value: \$129.00



Shrunken Monkeys Head

Object/Artifact

E-5

Ethnography



Description

Originally, this shrunken head was thought to be human in nature. But notes on its original cataloging information tell us it is actually a imitation, the head of a monkey sold to tourists as the real thing.

Collection

El Camino College Anthropology Museum

Acquisition

Accession

76.7.1

Source or Donor

Mrs. Theresa Rodriguez

Source (if not Accessioned)

Mrs. Theresa Rodriguez

Ethnography

Cultural Region

* Untyped Cultural Region Eastern Ecuador

Culture/Tribe

Jivaro

Notes

It is not known for certain what culture exactly this head comes from. Eastern Ecuador and the Jivaro culture are a best guess from notes on the original catalog information.

Dimensions

Length

5 in

Location

Location

* Untyped Location WR-4

Date

Jun 16, 2022

Condition

Overall Condition

Very Good

Date Examined

Jun 16, 2022

Web Links

Web Bookmarks, Links and URLs

[The Jivaroan People](#)

[Shrunken Heads](#)

Update Date

Jun 16, 2022

Create Date

Jun 16, 2022

Updated By

ohavens@elcamino.edu

Created By

ohavens@elcamino.edu

