



Art History Department Meeting

Monday, September 12,  
2022

# Art History Department Meeting

## Agenda

- I) Reports
  - a) Cheryl Kroll, Counseling
  - b) David Reed, BSS Student Success Team – ECC Connect
- II) Scheduling and Enrollment
- III) Art History Student Demographics and Program Data
  - a) Ethnicity and Age
  - b) Student Success and Equity Gaps
  - c) Degrees and Transfer Destinations
- IV) Department Business
  - a) FT Hiring and AHIS Coordinator (Ali)
  - b) CAA Membership and Conference
  - c) Curriculum
  - d) SLOs and Assessment
  - e) Hyflex
  - f) New Office Locations

## Counseling Updates for Department Meetings: Fall 2022

### Transfer Center Events:

<https://www.elcamino.edu/academics/transfer-center/events-and-workshops/index.aspx>.

*On Campus University Fair: Thursday, September 22<sup>nd</sup> from 11-2 in the Student Services Plaza. Over 60 universities attending!*

*Please note that students may also book appointments with a wide variety of college/university representatives on our Transfer Center website as well.*

*September is TAG month and the Transfer Center will host TAG workshops all month, so please encourage students to sign up on the Transfer Center website if applicable.*

*CSU/UC Application workshops will commence on October 1<sup>st</sup>. Both in person and virtual options will be available. Students will sign up on the Transfer Center website.*

### Career Center Events:

<https://www.elcamino.edu/support/careers/index.aspx>

New resources have been added to this website and students can now access job opportunities here as well.

### Scheduling Counseling Appointments:

All counselors were on Express through September 9<sup>th</sup>. Students are now able to book appointments via ECC Connect for the week of September 12<sup>th</sup> and beyond. We are no longer using Campus Calibrate. Link to book:

<https://www.elcamino.edu/support/counseling/appointments.aspx>

My office is still temporarily located in MBAH 453 until we move into our new space.

### Meta Major Outreach

In addition to our gateway courses, we will be reaching out to all new BSS meta major students for educational planning this semester.

We will also begin to host "What Can I Do With a Major In?" workshops for our majors, beginning with psychology and sociology this semester.

We will likewise be participating in the Student Support Expo on Monday, September 19<sup>th</sup> and will provide students with additional meta major resources at that event.

# ECC Connect Boosts Fall-to-Spring Persistence

Fall to Spring Persistence	Fall 2018	Fall 2019	Fall 2020	Fall 2021
<b>Connect Student</b>	<b>82%</b>	<b>80%</b>	<b>78%</b>	<b>71%</b>
In Support Program	88%	85%	85%	79%
Not in Support Program	71%	73%	71%	64%
American Indian	67%	92%	75%	78%
Asian	86%	84%	84%	75%
Black/African American	73%	73%	71%	65%
Hawaiian/Pacific Islander	84%	65%	73%	61%
Hispanic	83%	80%	77%	70%
Two or More Races	89%	79%	78%	75%
Unknown	67%	67%	73%	63%
White	83%	85%	80%	73%
<b>Non-Connect Student</b>	<b>71%</b>	<b>65%</b>	<b>63%</b>	<b>54%</b>
In Support Program	80%	73%	72%	64%
Not in Support Program	67%	62%	60%	50%
American Indian	77%	44%	65%	36%
Asian	78%	71%	67%	60%
Black or African American	61%	59%	58%	48%
Hawaiian/Pacific Islander	71%	60%	51%	58%
Hispanic	71%	64%	62%	53%
Two or More Races	76%	71%	66%	53%
Unknown	60%	53%	60%	54%
White	75%	67%	67%	56%

Recent data indicates that ECC Connect use by faculty has a positive effect on fall-to-spring persistence (11-16%).

In a time of decreased enrollment numbers, ECC Connect use by faculty is more important than ever!

# Fall 2022 Schedule & Enrollment

Total Sections – 22 sections

Seats Filled - 824

Overall Fill Rate – 86% fill rate

Online – 14 sections, 93% fill rate

On Campus – 1 section, 89% fill rate

Hybrid – 6 sections, 71% fill rate

Hyflex – 1 section, 60%

# Fall v. Spring 2022 Enrollment

## Spring 2022

Total Sections – 21 sections  
Seats Filled - 692  
Overall Fill Rate – 79.5% fill rate

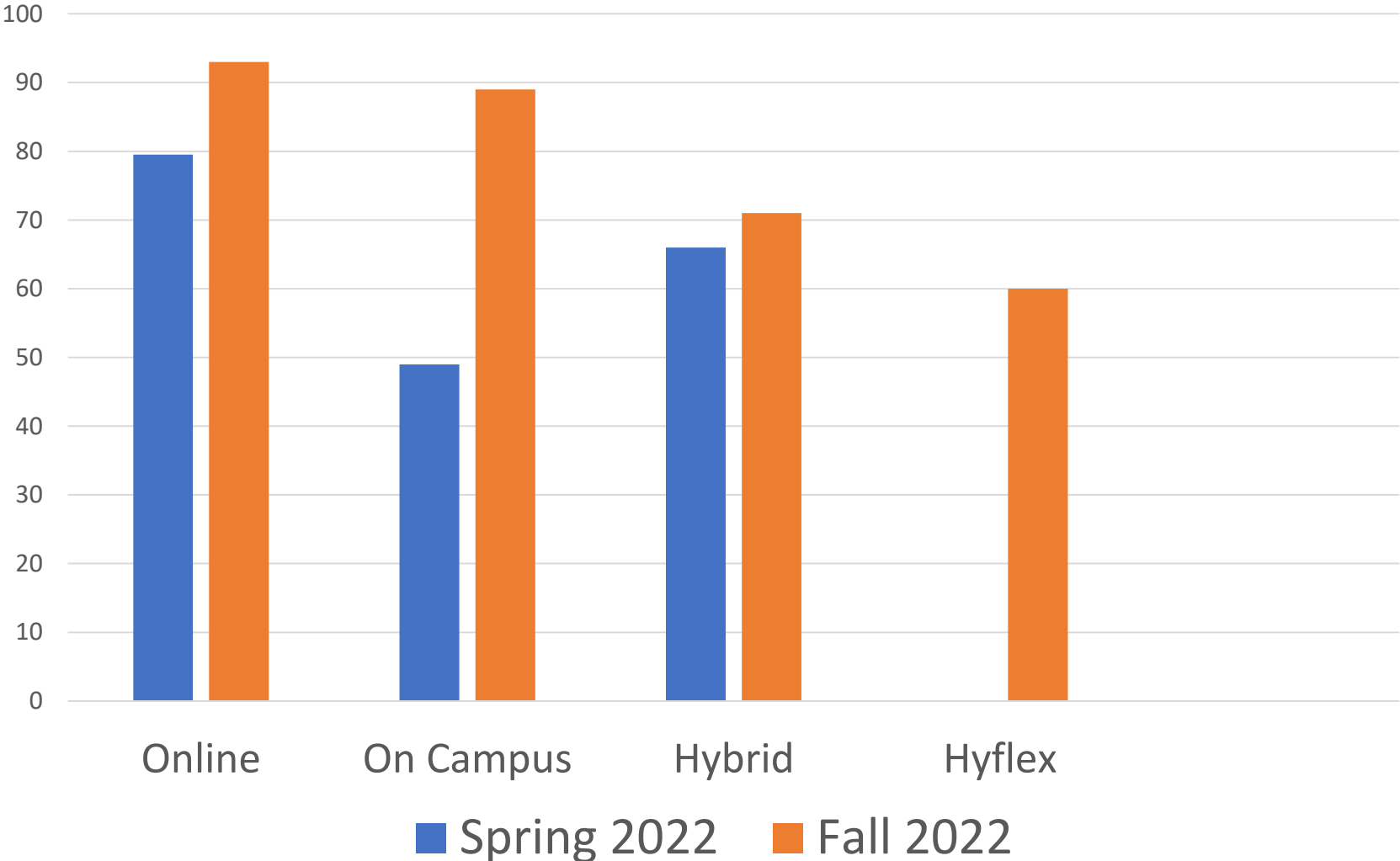
Online – 12 sections, 90.5% fill rate  
On Campus – 1 section, 49% fill rate  
Hybrid – 7 sections, 66% fill rate

## Fall 2022

Total Sections – 22 sections  
Seats Filled - 824  
Overall Fill Rate – 86% fill rate

Online – 14 sections, 93% fill rate  
On Campus – 1 section, 89% fill rate  
Hybrid – 6 sections, 71% fill rate  
Hyflex – 1 section, 60%

# Spring v. Fall 2022 Fill Rates



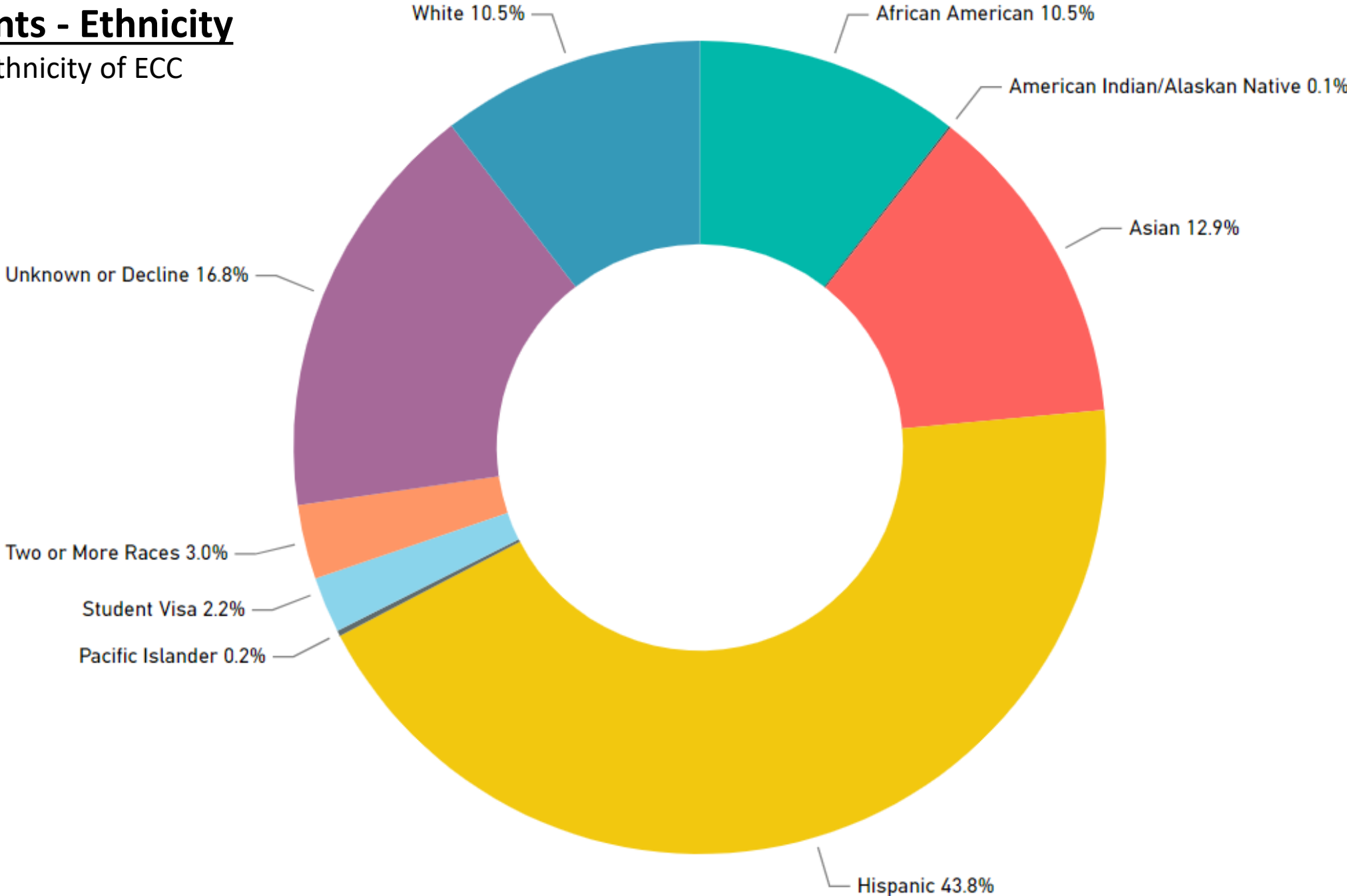
# Summer Section Count

<b>Course</b>	<b>Summer 2020 (9 sections)</b>	<b>Summer 2021 (8 sections)</b>	<b>Summer 2022 (8 sections)</b>
101	7	6	4
102A	1	0	1
102AH	1	1	1
102B	0	1	2



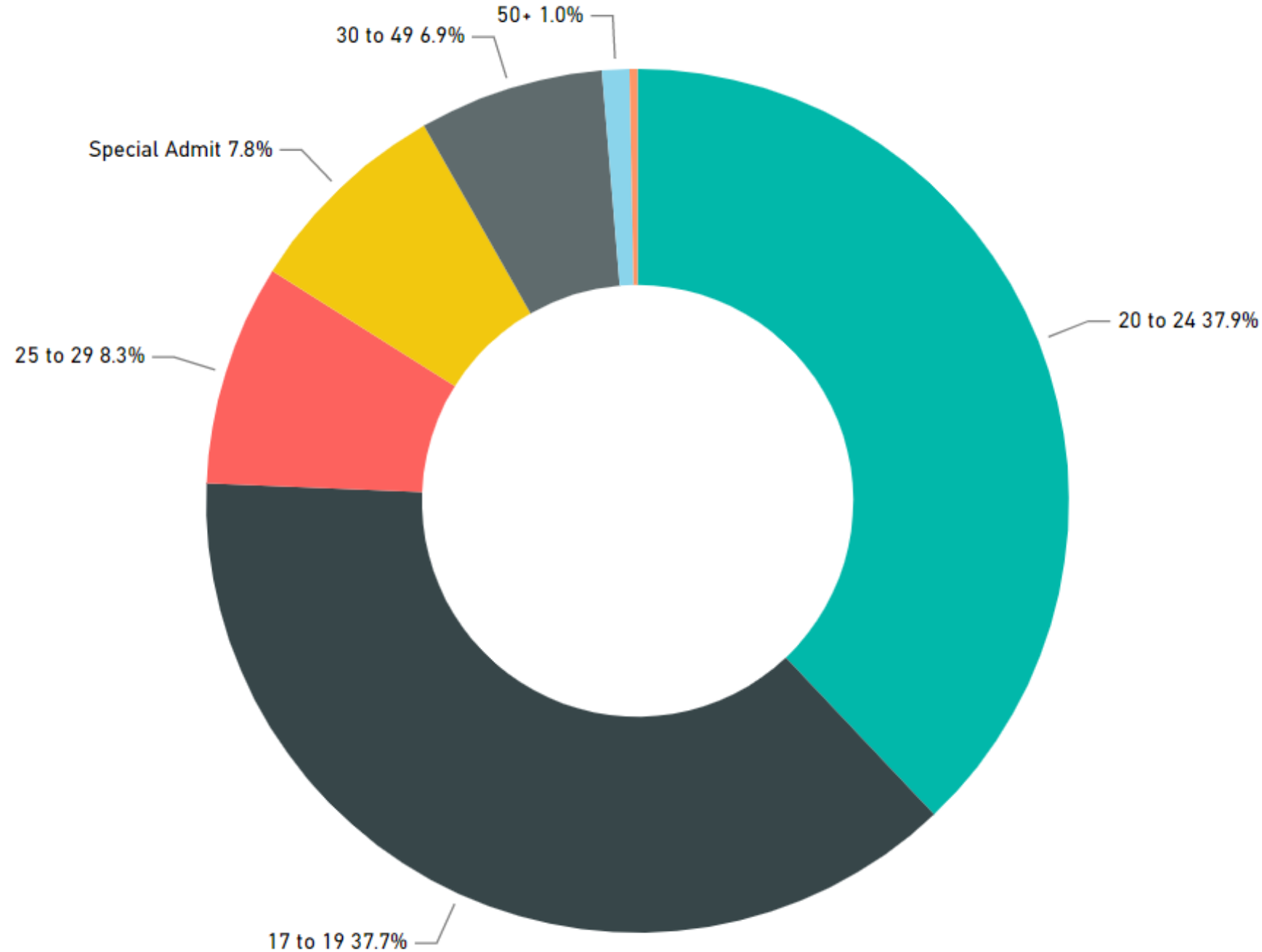
# Art History Students - Ethnicity

Closely resembles the ethnicity of ECC students in general.

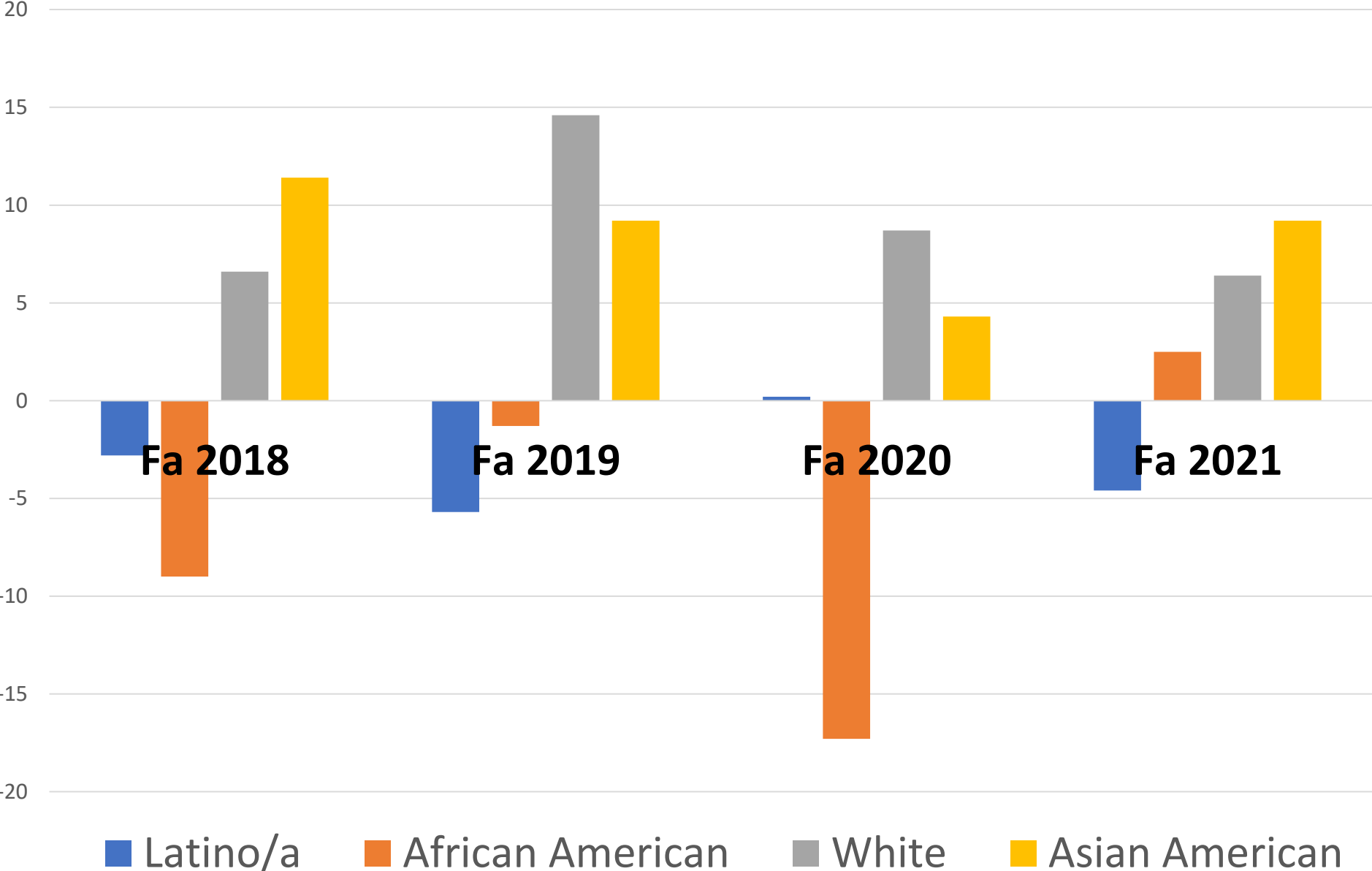


## Art History Students - Age

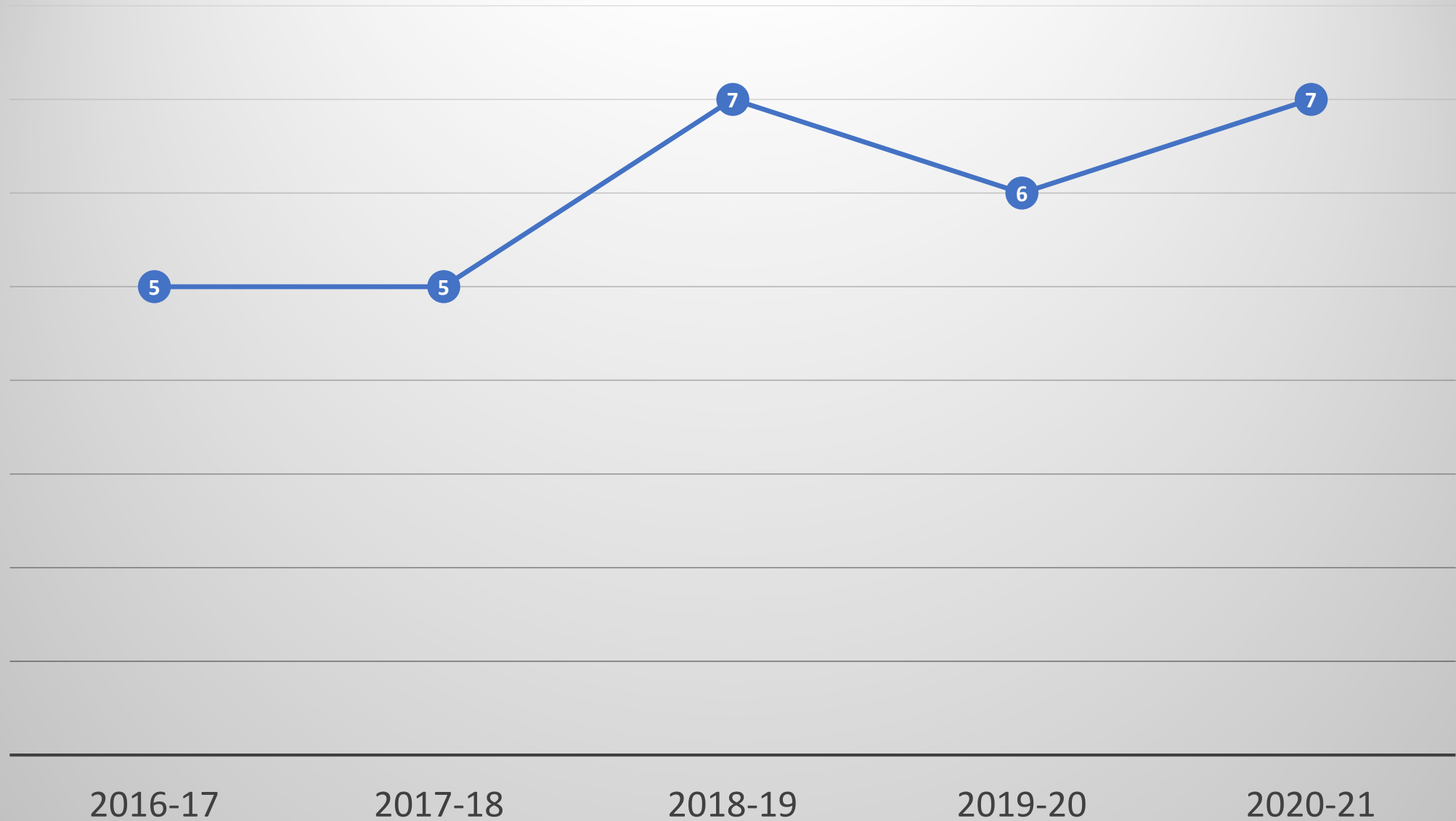
Art History students are somewhat younger than students across the college. 68% of ECC students are younger than 25 years old, versus 76% of Art History students. As the District population ages, it may impact Art History a little more than other programs.



# Success Gaps – Art History 101 - Fall 2018-2021



# ART HISTORY DEGREES



—●— Degrees

# Transfer Destinations for Art History Students

CSU Long Beach

SF State University

Cal Poly Pomona

CSU Dominguez Hills

CSU Los Angeles

Art Institute of Chicago

UC San Diego

UC Santa Cruz

Woodbury University

# Department Business

- a) FT Hiring and AHIS Coordinator (Ali)
- b) CAA Membership and Conference
- c) Curriculum (AHIS 205A & 205B – 6-year review. AHIS 106 Cross Cultural Art – inactivation.)
- d) SLOs and Assessment
- e) Hyflex
- f) New Office Locations

Hi all,

By the time we meet it will be after the due date so I thought I'd throw it in here—SLOs are due this Friday. It doesn't look like any have been entered into nuventive yet. Here's the link if you are doing the report on your own:

<https://www.elcamino.edu/academics/outcomes/nuventive/index.aspx>

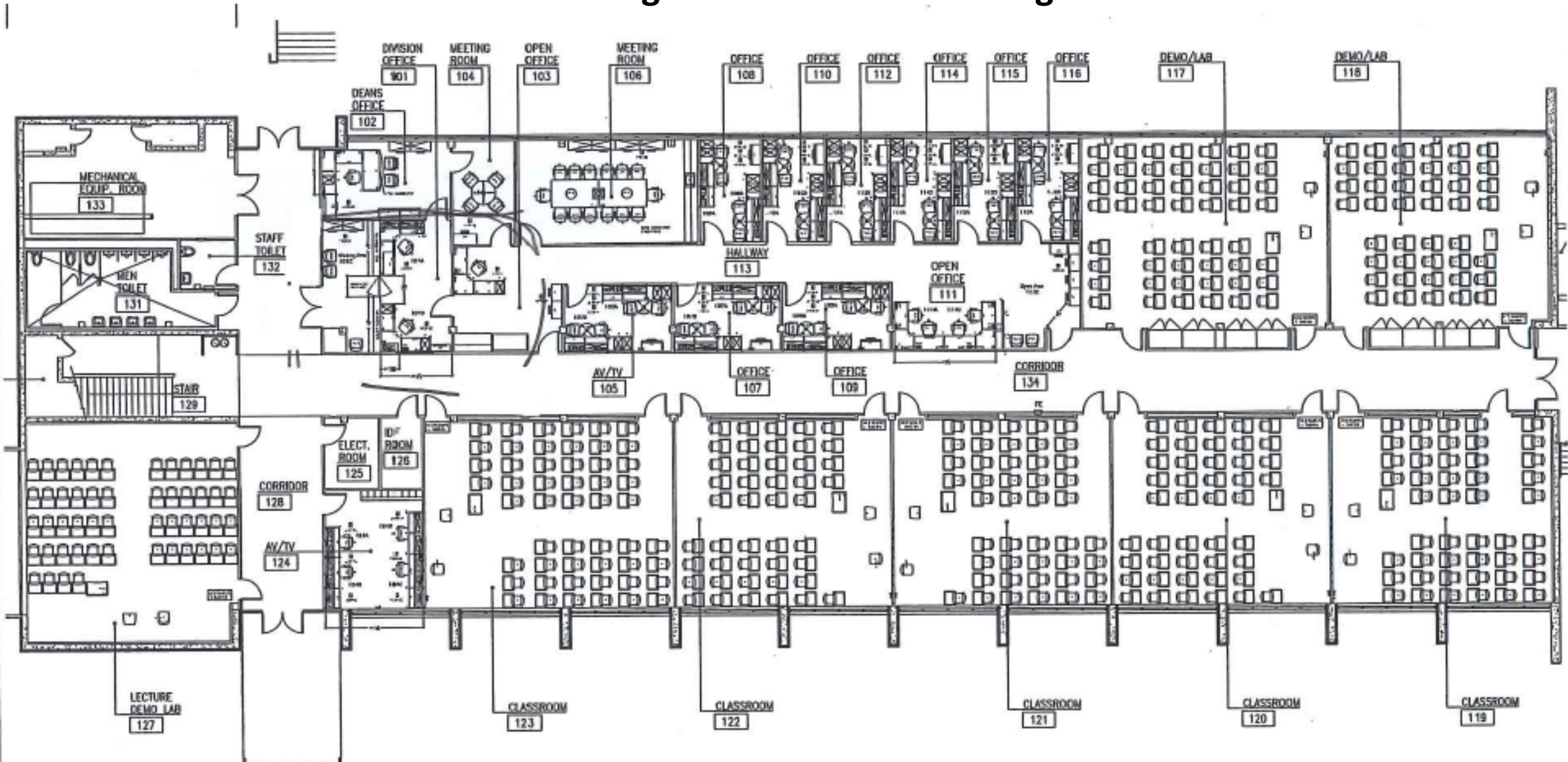
Remember to also enter the results in our spreadsheet in the shared drive. For 101 assessments, that's all you'd do and I will put all the results together in nuventive. I'm working on entering mine, but I believe Gretchen has already contributed her data (thanks!).

<https://docs.google.com/spreadsheets/d/1XtabSHCNPqw-zRFFD-DVfs5vq6QzYiR/edit#gid=1322697620>

Thanks and I'll see some of you at our meeting next week.

-Karen

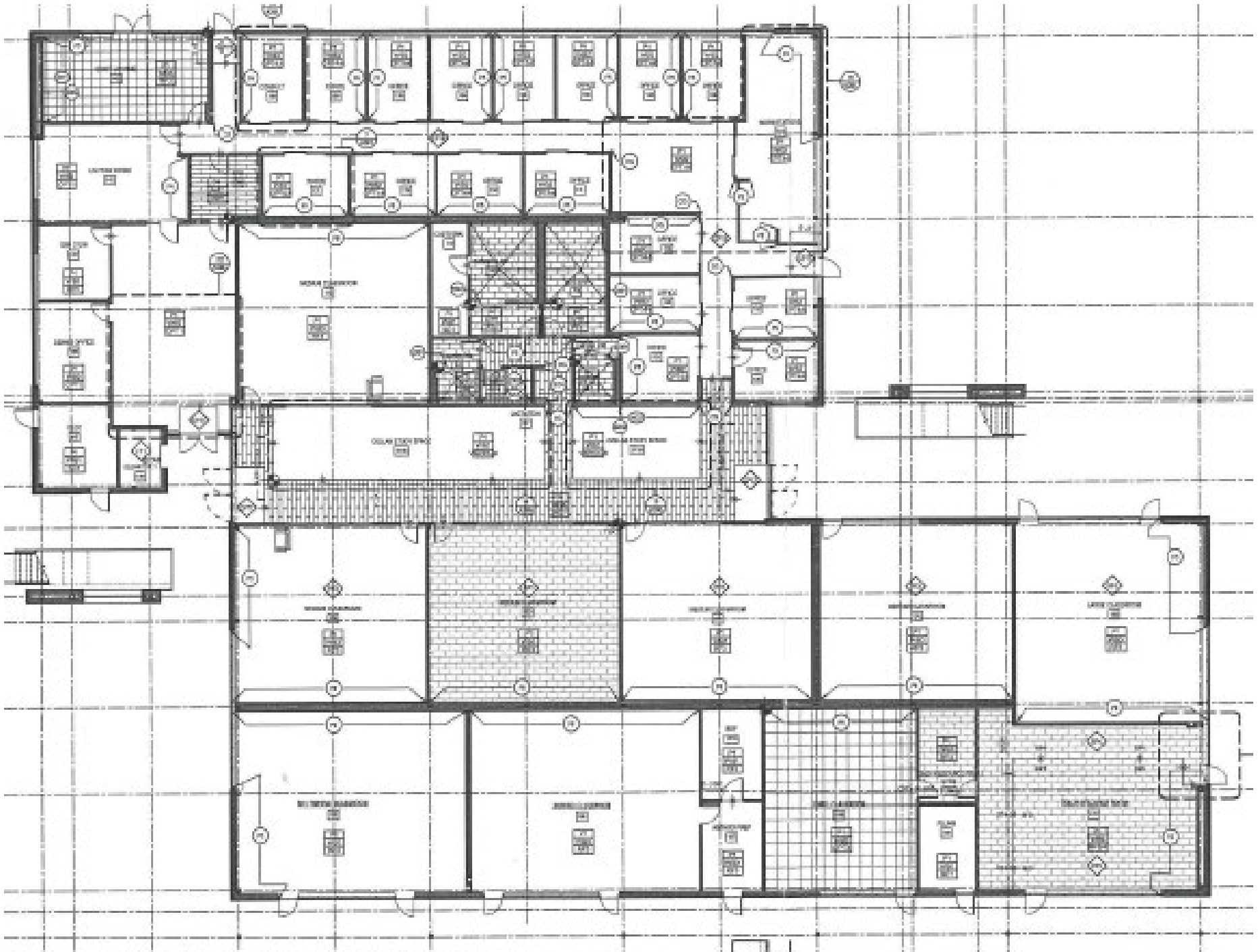
# Existing Social Sciences Building

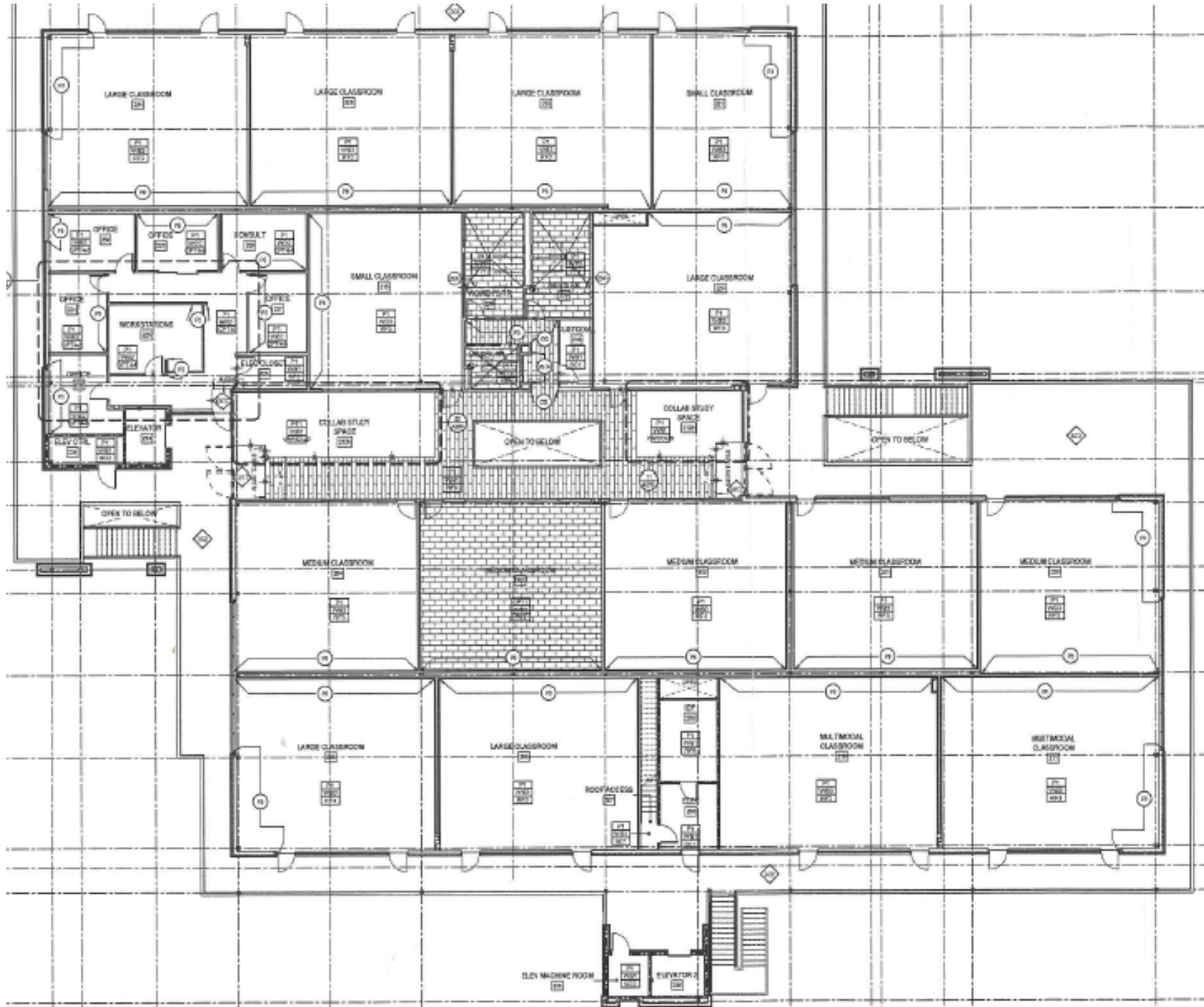


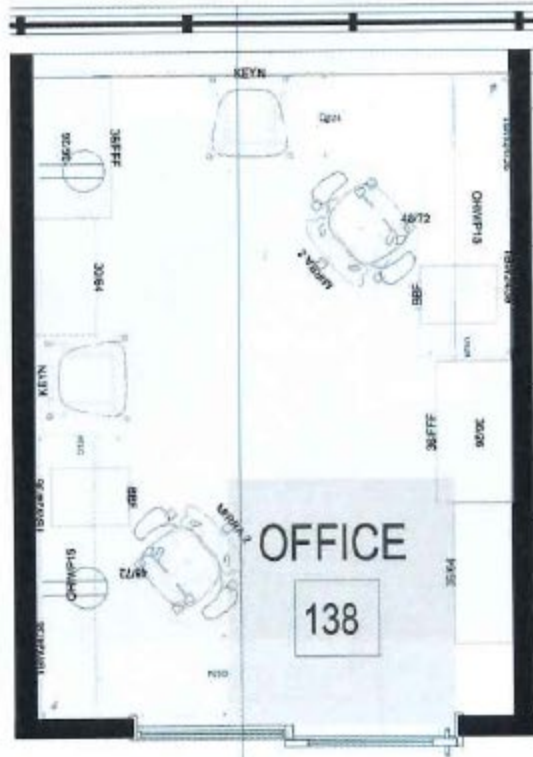


## Existing Social Sciences Building









**FACULTY OFFICE TYP1**

- (2) CANVAS FREESTANDING EXTENDED CORNER SURFACES
- (2) BBF PEDESTAL
- (2) OVERHEADS WITH SLIDING DOORS
- (2) 5H OPEN BOOKCASES
- (2) 5H HIGH LATERAL FILE WITH OPEN BOOKCASE UNITS
- (2) TASK CHAIRS
- (2) GUEST CHAIRS



Client Signature \_\_\_\_\_ Date \_\_\_\_\_

Note: Your approval is necessary for our order process to begin. Your signature here indicates that all fabrics and finishes are approved as shown. Fabrics and finishes are displayed for reference only and will vary by monitor and printer from the actual material color. Selections have been made with a physical sample or swatch for true color and detail.

05/06/2022

