



**Division of Behavioral and Social Sciences
Childhood Education Department
February 28, 2023**

MINUTES

- Members:**
- | | |
|---|--|
| <input checked="" type="checkbox"/> Dean: Christina Gold | <input checked="" type="checkbox"/> Michelle Moen |
| <input checked="" type="checkbox"/> Yadira Arellano-Lopez | <input type="checkbox"/> Reshon Moutra |
| <input checked="" type="checkbox"/> Susan Baxter | <input checked="" type="checkbox"/> Maria Rivera |
| <input checked="" type="checkbox"/> Cynthia Cervantes | <input type="checkbox"/> Monica Robinson |
| <input checked="" type="checkbox"/> Alec Colchico | <input type="checkbox"/> Monica Simon |
| <input type="checkbox"/> Michael Collins | <input type="checkbox"/> Kumi Toyoda-Smart |
| <input type="checkbox"/> Jamie Garvin | <input checked="" type="checkbox"/> Shanthi Tharuvai |
| <input checked="" type="checkbox"/> Janice Jefferis | <input type="checkbox"/> Carol Tatsumi |
| <input type="checkbox"/> Mark Marano | <input checked="" type="checkbox"/> Brittany Wilson |
| <input type="checkbox"/> Valerie Marquez | <input type="checkbox"/> Janet Young |
-

I) SOCS Building – CDEV Spaces (PowerPoint slides 3-6)

- The classroom in the new building for the Music and Movement class has carpeting, stackable chairs, and table/desks that can be folded down and pushed against the wall.
- The storage room has space for all the bins for curriculum and other classes. During the planning stage, we measured and counted bins and provided specific direction re: the built-in storage. It should fit everything.
- The Teacher Resource Room has more vibrant colored flooring and chairs to offer a more K12 feel. There is a counter in the back with plug for computers and printers; a sink; paper storage, and a tackboard.
- A door leads outside from the TRR to the exterior instructional space. There is a concrete podium and bench seating for students and raised beds will be added for a demonstration garden. The area will be surrounded by a fence and landscaping to make it private. It can also be used for club events with students, parents, and children.

II) Schedule a Second Meeting

- There are a LOT of agenda items. This is a testament to how busy and productive our CDEV faculty are! We won't get to everything today. Bev or Cecelia will reach out to schedule a second meeting.

III) Spring Schedule and Enrollment (PP 8-9)

- See slide #8 for a comparison of section counts, enrollments and fill rates in Spring 2022 and 2023. In Spring, we have more on campus sections in an attempt to provide choice

and access to students who want or need to come to campus. However, these had only a 45% fill rate, whereas online sections have a 79% fill rate. We will need to tighten up scheduling in the fall, which will be fewer (but strategically planned) on campus sections. We will likely need only 7ish on campus sections.

- See slide #9 for a visual representation of filled v. unfilled seats.

IV) Success Rates and Equity Gaps (PP 10-12)

- See slide #10 for an overview of CDEV success rates from Fall 2019-Fall 2022. Overall there has been a steady decline in success, from 77.6% to 71% during this time. The decline may be due to COVID factors combined with the online format.
- See slide #11 for a comparison of success rates by modality in Fall 2022. Success rates were about 70% in online classes and 77.6% in on campus classes. The lower success rate in online classes may be due to a more challenging modality but also if a faculty member does not drop students as No Shows (which is possibly more common in online than in person classes), the large number of withdrawals and related F's bring down the average.
- See slide #12 for equity gaps in CDEV from Fall 2019 through Fall 2022. Equity gaps were smallest in Fall 2019 then expanded during COVID. The gaps were on the decline again in Fall 2022 but are still not at 2019 levels.
- The department discussed reaching across campus to connect with the Social Justice Center and Black Student Union to develop stronger relationships and to get students connected to other resources across campus for support and tutoring and to help the department understand how to better serve Black students.

V) Degrees and Certificates (PP 13-14)

- CDEV offers 4 degrees (2 AAs, 1 AAT & 1 AST).
- The awarding of degrees declined during the pandemic and is recovering.
- The most commonly awarded degree is the CDEV AST. The awarding of this degree declined modestly during the height of the pandemic and has recovered to above pre-pandemic levels.
- CDEV offers 3 certificates. The awarding of certificates was only slightly impacted by the pandemic. In 2021-22, 103 certificates were awarded, which is slightly higher than before the pandemic.

VI) Curriculum, SLOs, and CTE Program Review

- Non-Credit CDEV and PAR Courses/Certificates. Cynthia has developed 2 non-credit CDEV courses and a related certificate of completion. She has also developed 3 non-credit parenting classes and a related certificate of completion. They are making their way through the curriculum process. These courses will not have an "N" in their acronym and will be numbered in the 500 series.
- Student Learning Outcomes. Michelle reported that the Fall SLO CDEV assessments are all complete! She will confirm with Eduardo that the list of courses for Spring assessment is accurate. For this Spring, the following PT faculty will be assessment leads: Janet Young, Susan Baxter, and Monica Simon.

- CTE Program Review. Cynthia is working on the 16 question CTE program review. She is in the process of working with IRP on survey students. This survey may also be used in the full program review.

VII) Department Agenda Items – Janice Jefferis

- **P-K Credential:** CSUDH and CSULB have pushed rolling out the PK-3 credential to SP/FA 2024. The CTC reached out to me to invite me to participate in collecting data for to develop Teacher Performance Expectations. My Practicum section is participating in one of the cycles that will begin mid-April. I will replace one of the Activity Plan assignments to have students complete mini activities that nurture family participation and a sense of belonging in the classroom community. I will update everyone on the results at the end of April.
- Update on Practicum Sites (new MOUs) and worksites. Janice has reached out to programs that Michelle identified during her sabbatical research as quality sites for possible mentorship placements. They are expressing interest.
- Updates with CECMP. (Moved to agenda for next meeting)
- Apprenticeship Grants. Janice and Lilliana (in the grants office) are working on identifying apprenticeship grants. Apprenticeships are all the rage. If you know of any related grants, please tell Janice.
- PACE Special Populations. Maria, Shanthi and Michelle – Janice would like PACE to come give a quick 5 minute presentation in your class regarding a paid internship opportunity.
- LMU Grant. The department is working on stream-lining the transfer pathway to Loyola Marymount University.
- TEACH El Camino (finding grants) (Moved to agenda for next meeting).
- Advisory Committee Meetings (every Fall or semester?) (Moved to agenda for next meeting).

IV) Department Agenda Items – Michelle Moen

- Charlotte Diamond Workshop (Saturday, March 11, 10-11:130am). Cost is \$20 and will likely sell out quickly.
- New policies for COI and contract requirements (Moved to agenda for next meeting). • CDTC (Child Development Training Consortium) Michelle reported on the CDTC Educational Support Grant t which provides funding of \$46 per unit for students who are currently working with children and for students in the practicum. Michelle has emailed CDEV students with information about this opportunity.
- CDEV Survey Results (moved to agenda for next meeting).

V) Department Agenda Items – Cynthia Cervantes

- CDEV Club (Cynthia)
 - a. Play Group – is offered on the first Saturday of every month from 11-12:30 for children 0-5 years old.
 - b. Parent Cafes – the club will hold 5 or 6 two hour session either on Zoom or in person.

- c. Collaborations with other ECC Programs – the club has been collaborating with the FIRST and CARE programs to provide children’s activities, including in the Social Justice Center. The club will be putting on activities for CARE’s Parent Appreciation Day.
- d. Cash For College and Club Rush – the club participated in these events.
- e. Budget Request – Cynthia is helping the club prepare a presentation to request a large amount of funds from the ASO.
- f. Promotion at ELAC Conference – the club will have a table at the event on March 15th.
- g. Weekly Workshop Style Meetings (moved to agenda for next meeting)

- Program Review - Career Education Supplemental Questions (Cynthia) (moved to agenda for next meeting).
- Guided Pathways Video (Janice? and Cynthia) (moved to agenda for next meeting)
- BIPOC Parent Survey. Cynthia asked that everyone encourage their BIPOC parents/students to complete this survey.
- Dual Enrollment - High School and Adult School. Cynthia is teaching a 104 class for Torrance Adult School students in collaboration with Hilary Estes, who is offering support sessions on Mondays for the students. Hilary also attends all class meetings. Hilary was recently approved to teach our courses at the Adult School as part of her regular contract there.
- Child Development Center IMPACT presentation. Cynthia’s IMPACT group made a presentation on reopening the CDC. Dr. Thames was in attendance and requested a cost analysis. There is also some conversation around campus about the possibility of afterschool care.
- Collaboration w/Connections for Children. Possible collaboration on workshops for parents via Zoom.

VI) CPTP (Community Partnership for Teacher Pipeline) – Yadira (moved to agenda for next meeting).

cc: Childhood Education Department Faculty
BSS Division Counselors
Carlos Lopez, VPAA



Childhood Education

Tuesday, Feb. 28, 2023

Childhood Education - Agenda

I) SOCS Building – CDEV Spaces

II) Schedule a Second Meeting

III) Spring Schedule and Enrollment

IV) Program Student Success and Gap Data

V) Curriculum, SLOs, and CTE Program Review

VI) Department Agenda Items – Janice Jefferis

- PK-3 Cycle 3 Participations
- Update on Practicum Sites (new MOUs) and worksites
- Updates with CECMP
- Apprenticeship Grants (Liliana)
- PACE Special Populations
- LMU Grant
- TEACH El Camino (finding grants)
- Advisory Committee Meetings (every Fall or semester?)

IV) Department Agenda Items – Michelle Moen

- Charlotte Diamond Workshop (Saturday, March 11, 10-11:130am)
- New policies for COI and contract requirements
- SLOs (Michelle)
- CDTC (Michelle)
- CDEV Survey Results

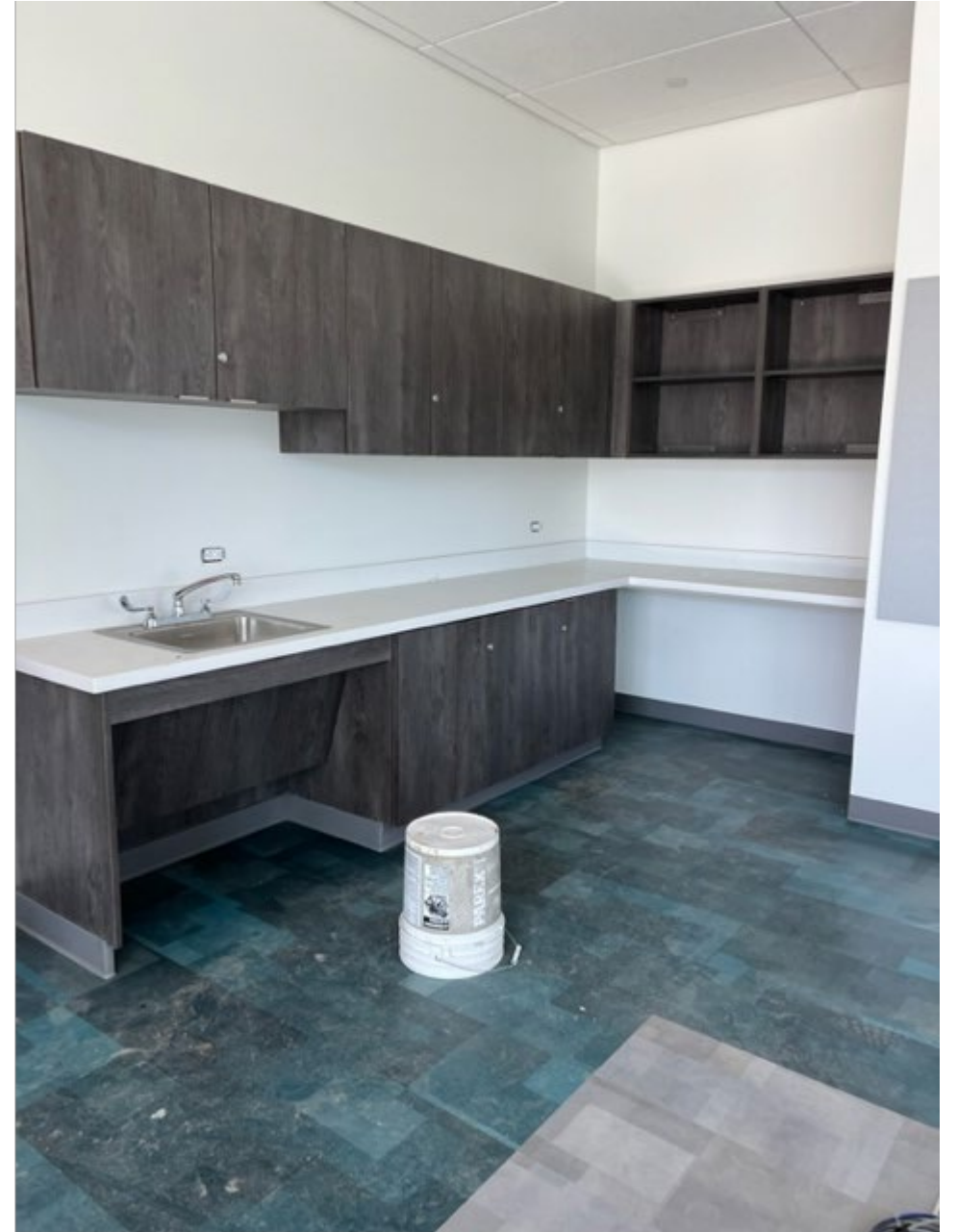
V) Department Agenda Items – Cynthia Cervantes

- CDEV Club (Cynthia)
 - a. Play Group
 - b. Parent Cafes
 - c. Collaborations with other ECC Programs
 - d. Cash For College and Club Rush
 - e. Budget Request
 - f. Promotion at ELAC Conference
 - g. Weekly Workshop Style Meetings
- Program Review - Career Education Supplemental Questions (Cynthia)
- Guided Pathways Video (Janice? and Cynthia)
- BIPOC Parent Survey (Cynthia)
- Dual Enrollment - High School and Adult School (Yadira, Valerie & Cynthia)
- Child Development Center (Cynthia)
- Collaboration w/Connections for Children (Cynthia)

VI) CPTP (Community Partnership for Teacher Pipeline) – Yadira









Spring 2022 v 2023 Schedule & Enrollment

(snapshot week two)

Spring 2022

Total Sections – 36

Seats Filled - 1290

Overall Fill Rate – 85% fill rate

Online – 25 sections, 96% fill rate

On Campus – 7 sections, 39% fill rate

Hybrid – 3 sections, 79% fill rate

Live Online – 1 sections, 110% fill rate

Spring 2023

Total Sections – 42

Seats Filled - 1330

Overall Fill Rate – 79% fill rate

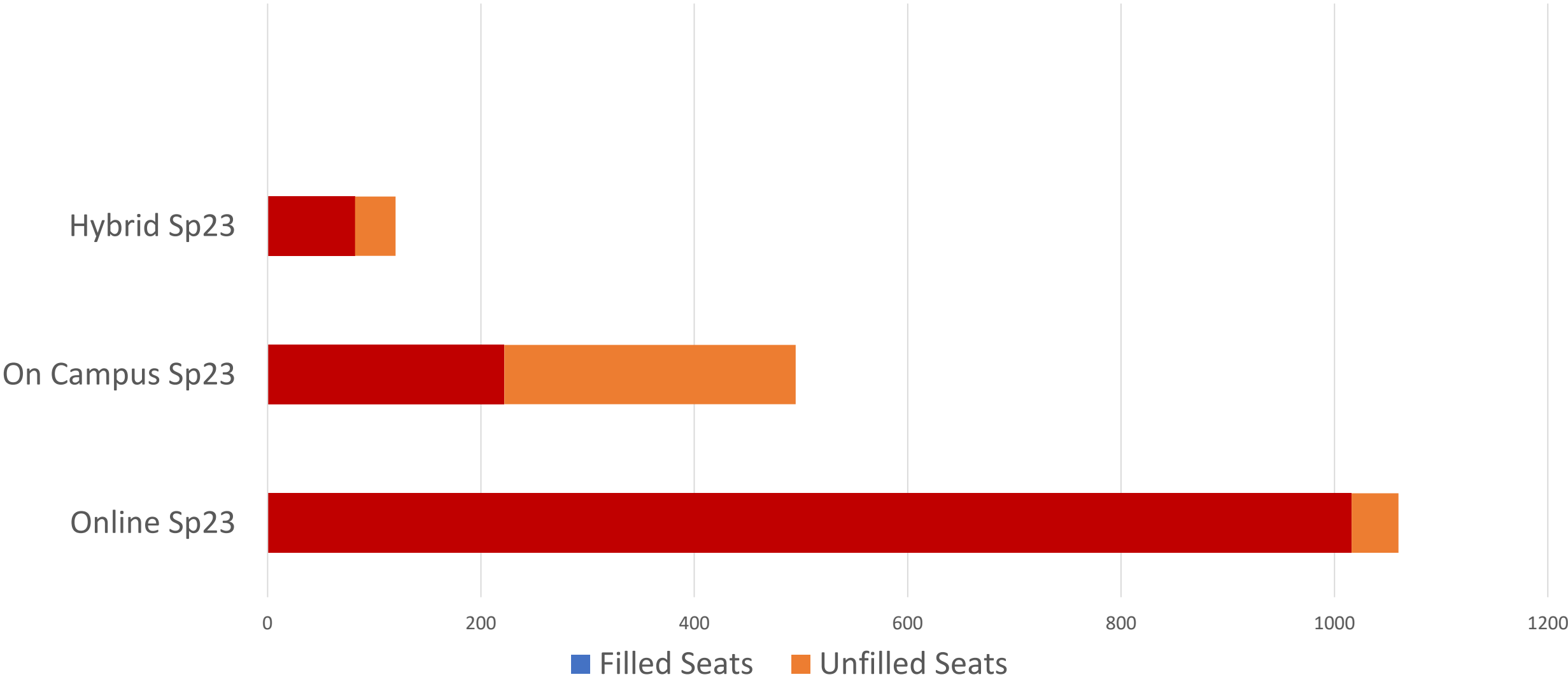
Online – 26 sections, 96% fill rate

On Campus – 12 sections, 45% fill rate

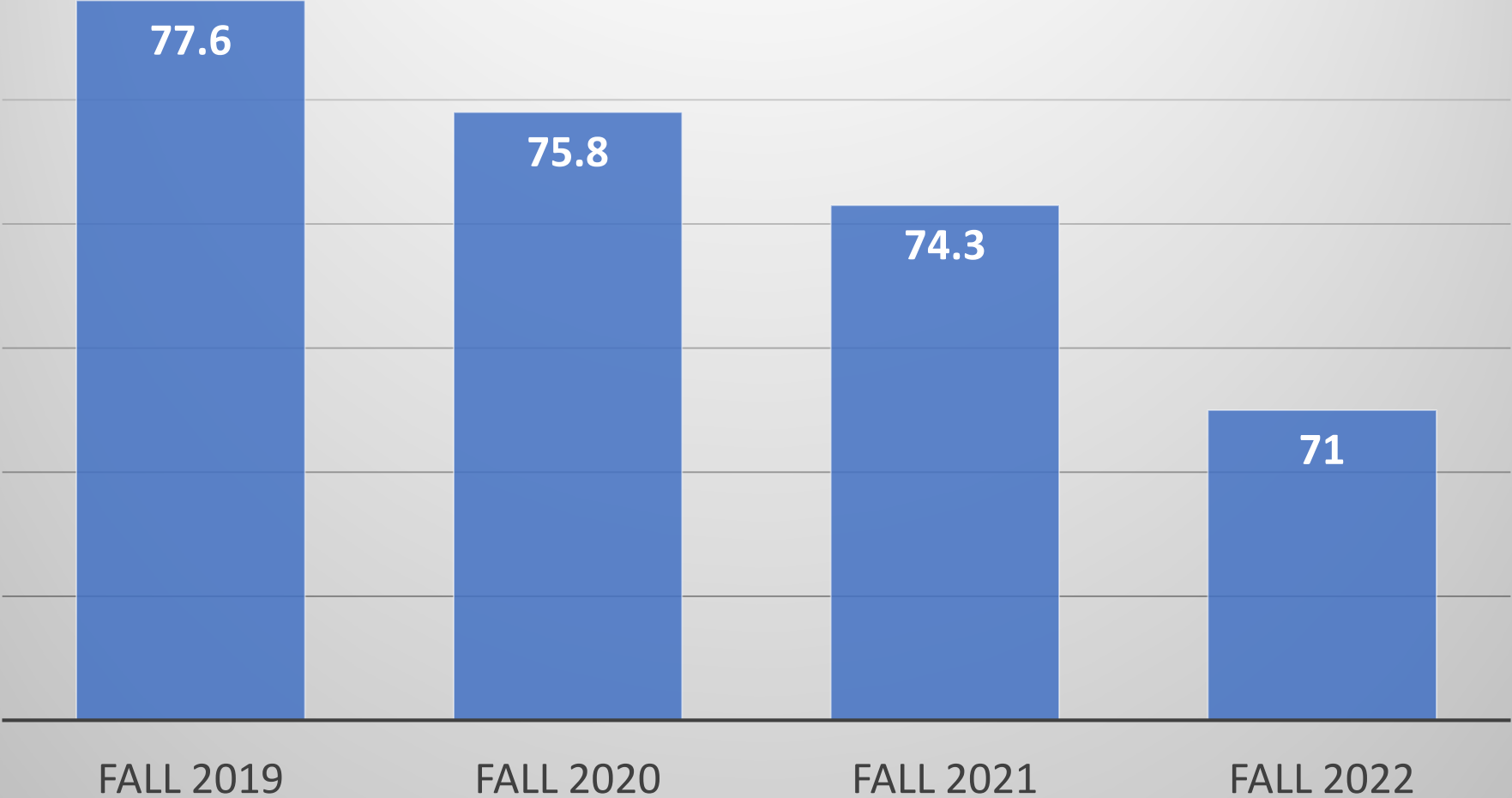
Hybrid – 3 sections, 68% fill rate

Dual Enrollment – 1 section, 33% fill

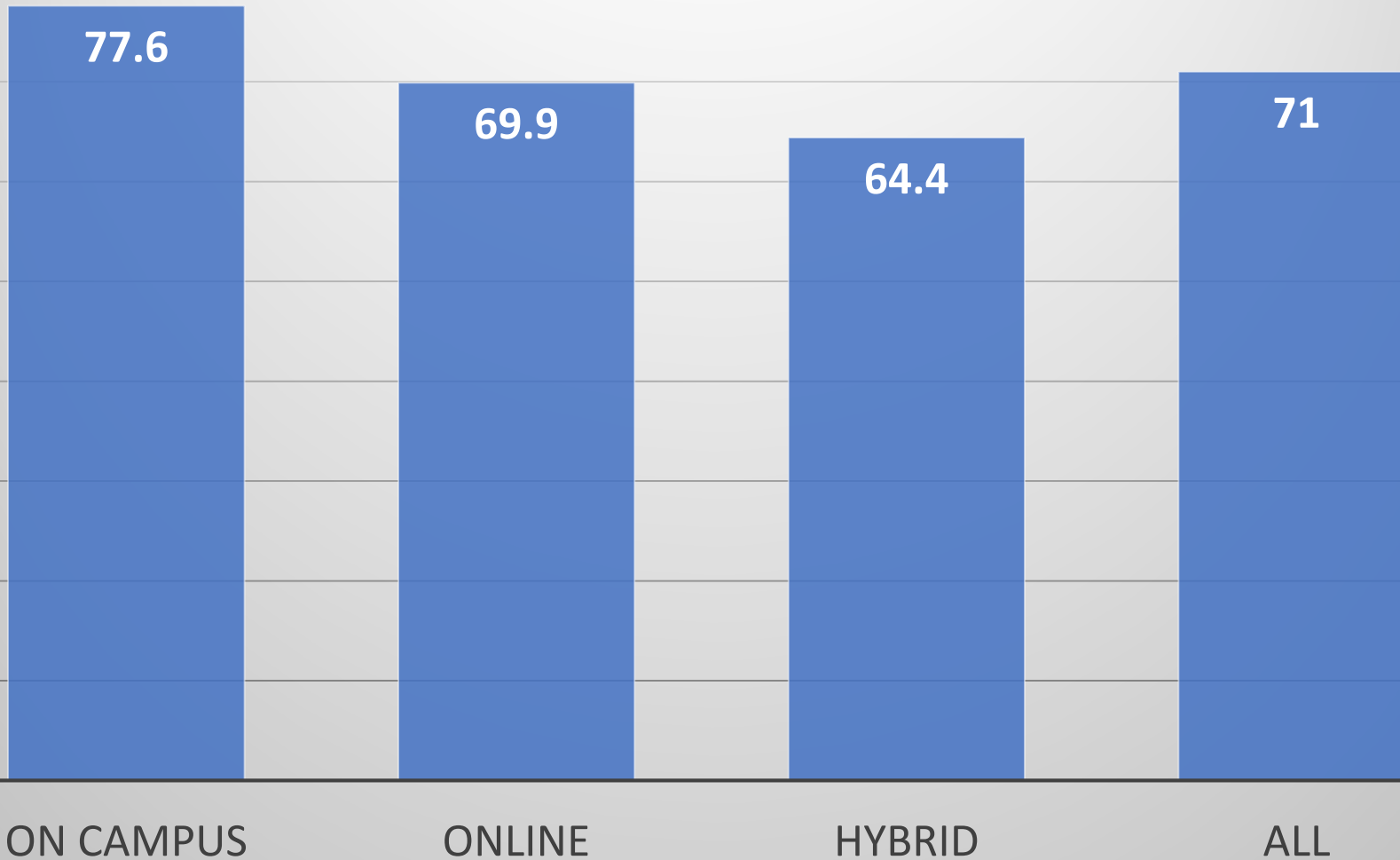
Spring 2023 Enrollment – Seats Filled and Unfilled (Snapshot – week two)



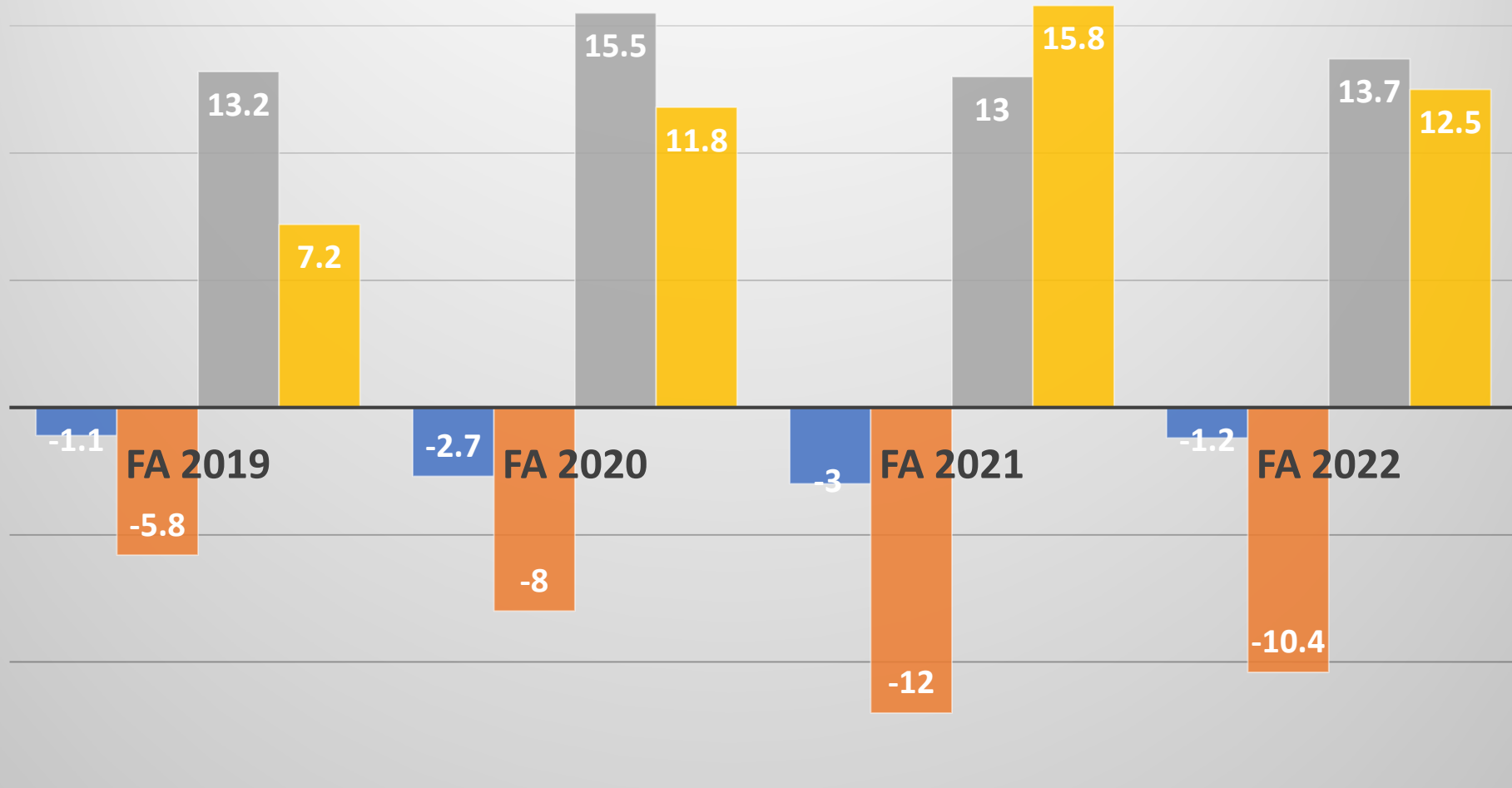
Success – Childhood Education – Fall 2019-2022



Success by Modality – Childhood Education – Fall 2022

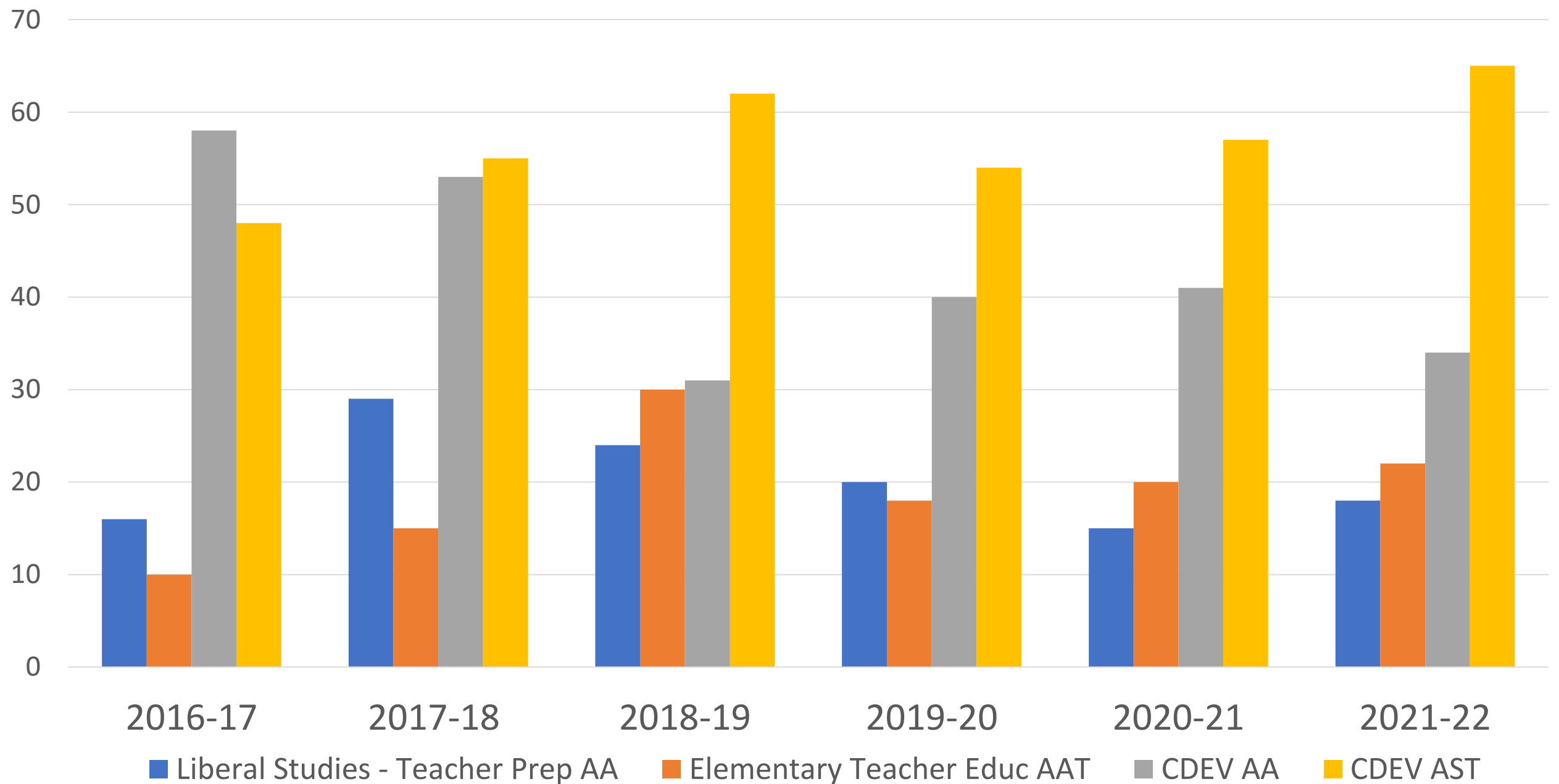


Success Gaps – Childhood Education – Fall 2019-2022

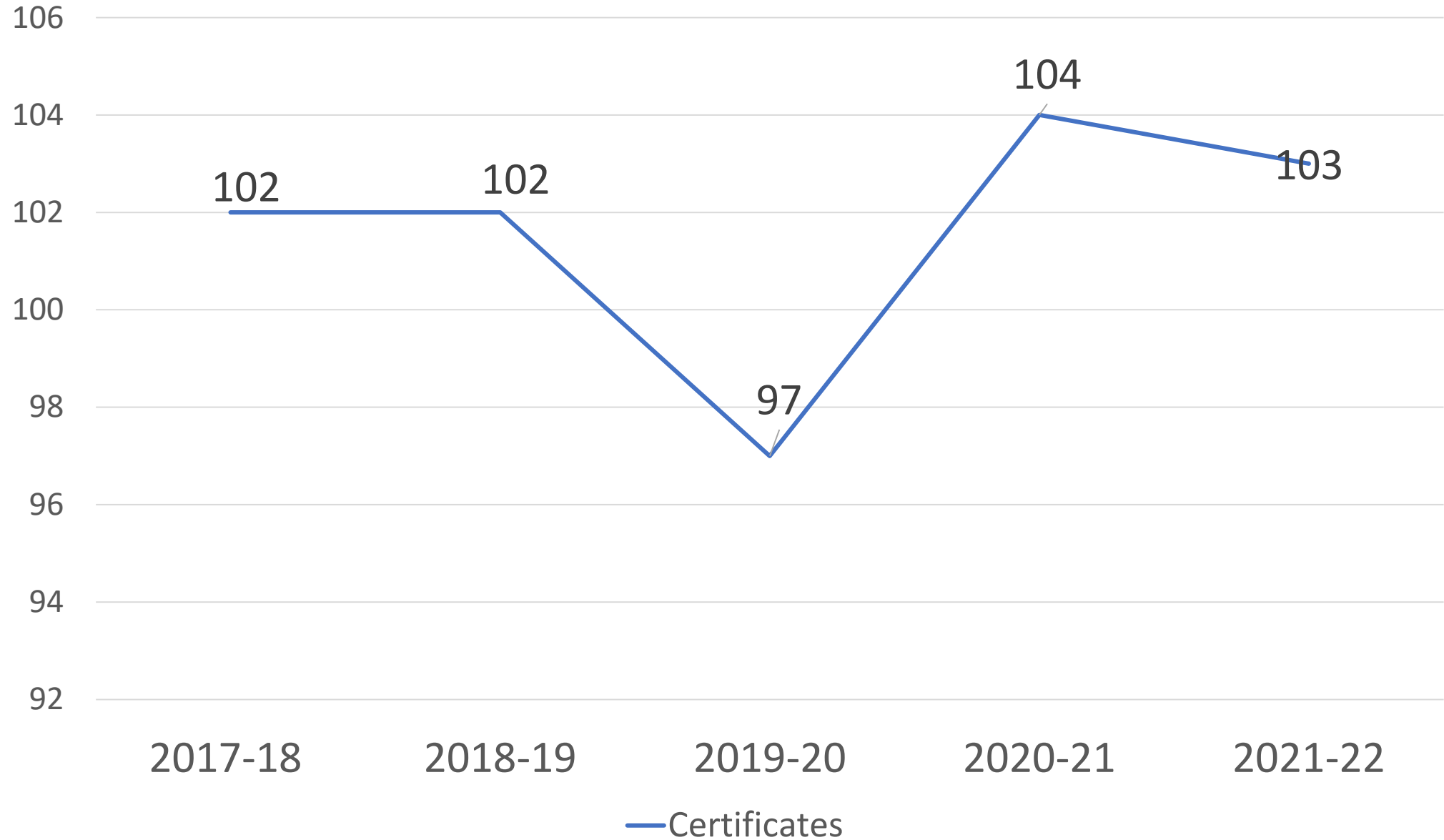


■ Latino/a ■ African American ■ Asian ■ White

CHILDHOOD EDUCATION DEGREES



CHILDHOOD EDUCATION CERTIFICATES



Curriculum, SLOs, CTE Program Review

- Non-Credit CDEV and PAR Courses/Certificates (Cynthia)
- Student Learning Outcomes (Michelle)
- CTE Program Review